

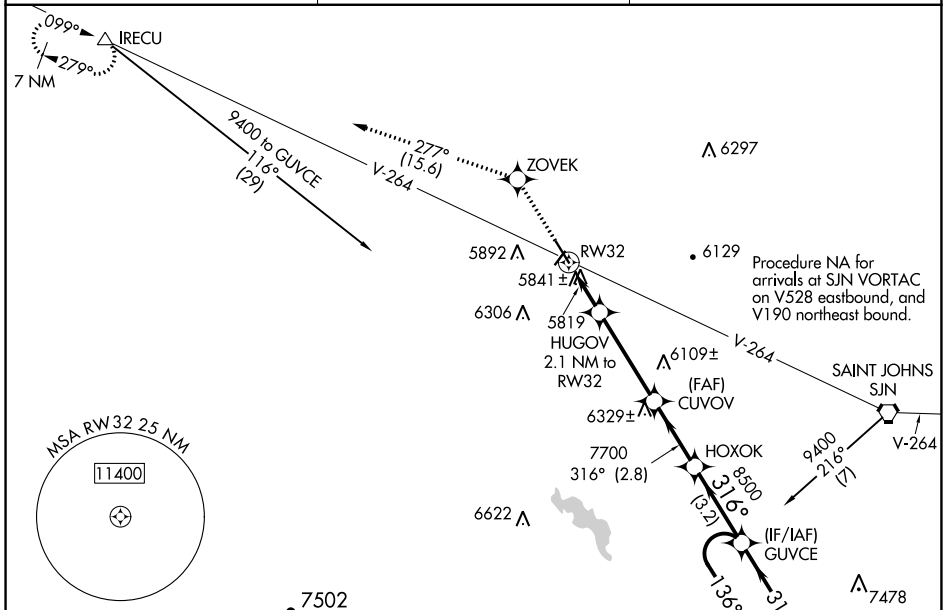
WAAS CH 42643 W32A	APP CRS 316°	Rwy Idg TDZE Apt Elev	5230 5737 5737
--	------------------------	-----------------------------	---

RNAV (GPS) RWY 32

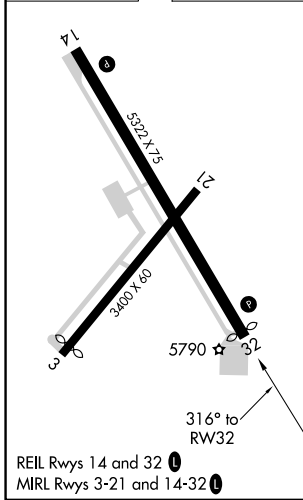
ST JOHNS INDUSTRIAL AIR PARK (SJN)

RNP APCH.	<p>▼ Rwy 32 helicopter visibility reduction below 1 SM NA. For uncompensated Baro-VNAV systems, LNAV/VNAV NA below -13°C or above 54°C. Rwy 32 Straight-in NA at night. Circling Rwy 3, 32 NA at night.</p>	<p>MISSED APPROACH: Climb to 9400 direct ZOVEK and on track 277° to IRECU and hold.</p>
-----------	--	---

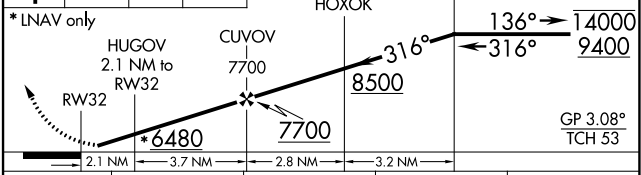
ASOS 134.225	ALBUQUERQUE CENTER 124.325 288.25	UNICOM 122.8 (CTAF) 0
------------------------	---	---------------------------------



ELEV 5737	TDZE 5737
-----------	-----------



9400	ZOVEK	tr 277°	IRECU	VGSI and descent angles not coincident (VGSI Angle 3.00/TCH 40).	7 NM Holding Pattern
------	-------	---------	-------	--	----------------------



CATEGORY	A	B	C	D
LPV DA	5987-1	250 (300-1)		NA
LNAV/VNAV DA	6167-1¼	430 (500-1¼)		NA
LNAV MDA	6140-1	403 (500-1)		NA
C CIRCLING	6260-1 523 (600-1)	6280-1 543 (600-1)		NA

SW-4, 26 JAN 2023 to 23 FEB 2023

SW-4, 26 JAN 2023 to 23 FEB 2023