

WAAS CH <b>90525</b> <b>W04B</b>	APP CRS <b>039°</b>	Rwy Idg TDZE Apt Elev	<b>5100</b> <b>1384</b> <b>1394</b>
--	------------------------	-----------------------------	---

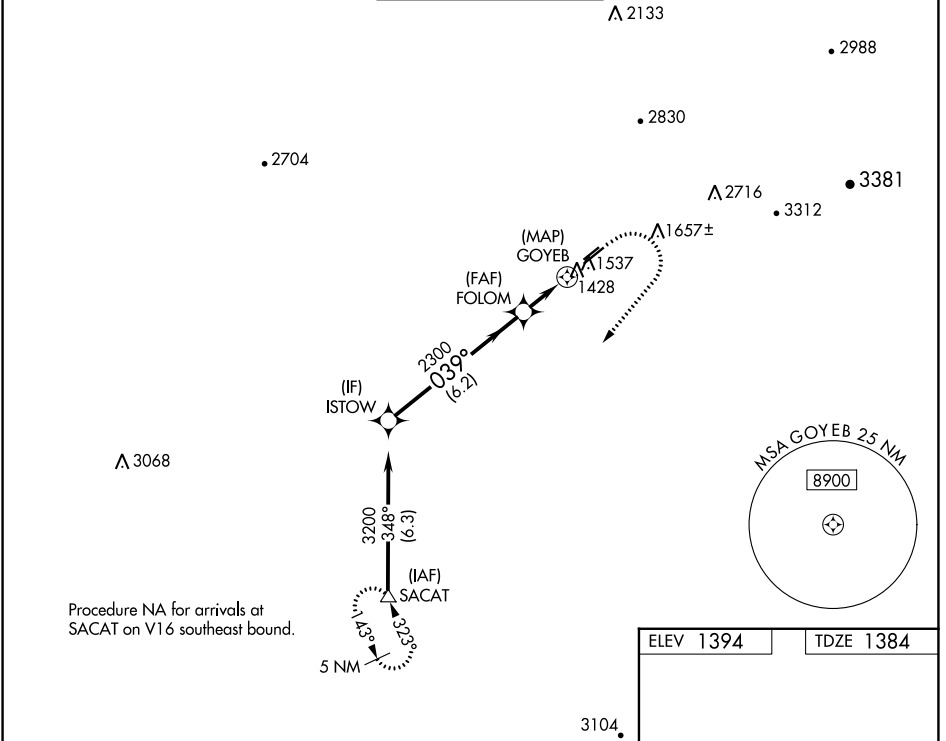
# RNAV (GPS) RWY 4R

FALCON FLD (F'F'Z)

RNP APCH. MISSED APPROACH: Climb to 1900 then climbing right turn to 5000 direct SACAT and hold, continue climb-in-hold to 5000.

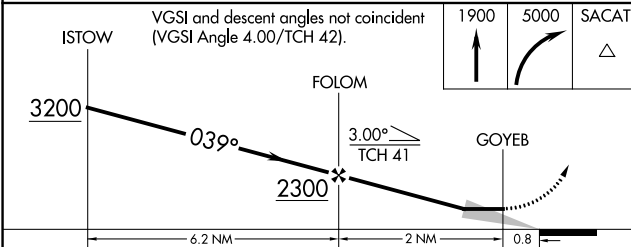
**⚠** Circling to Rwy 22L, 22R NA at night. Circling NA for Cat C southeast of Rwy 4R and 22L.

ATIS <b>118.25</b>	PHOENIX APP CON <b>120.7 239.0</b>	<b>FALCON TOWER ★</b> <b>124.6 (CTAF) 0</b>	GND CON <b>121.3</b>	UNICOM <b>122.95</b>
-----------------------	---------------------------------------	--	-------------------------	-------------------------

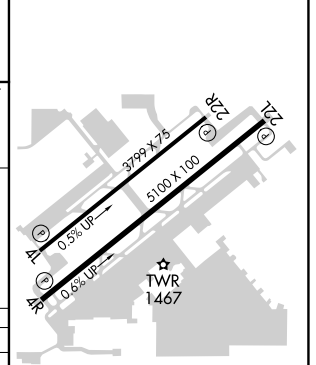


Procedure NA for arrivals at SACAT on V16 southeast bound.

ELEV 1394	TDZE 1384
-----------	-----------



CATEGORY	A	B	C	D
LP MDA	1680-1 296 (300-1)			NA
LNAV MDA	1800-1	416 (500-1)	1800-1 $\frac{1}{8}$ 416 (500-1 $\frac{1}{8}$ )	NA
<b>C</b> CIRCLING	1860-1 466 (500-1)	1980-1 586 (600-1)	2040-1 $\frac{3}{4}$ 646 (700-1 $\frac{3}{4}$ )	NA



REIL Rwy 4R, 4L, 22L and 22R  
MIRL Rwy 4R-22L **0**  
MIRL Rwy 4L-22R

SW-4, 26 JAN 2023 to 23 FEB 2023

SW-4, 26 JAN 2023 to 23 FEB 2023