

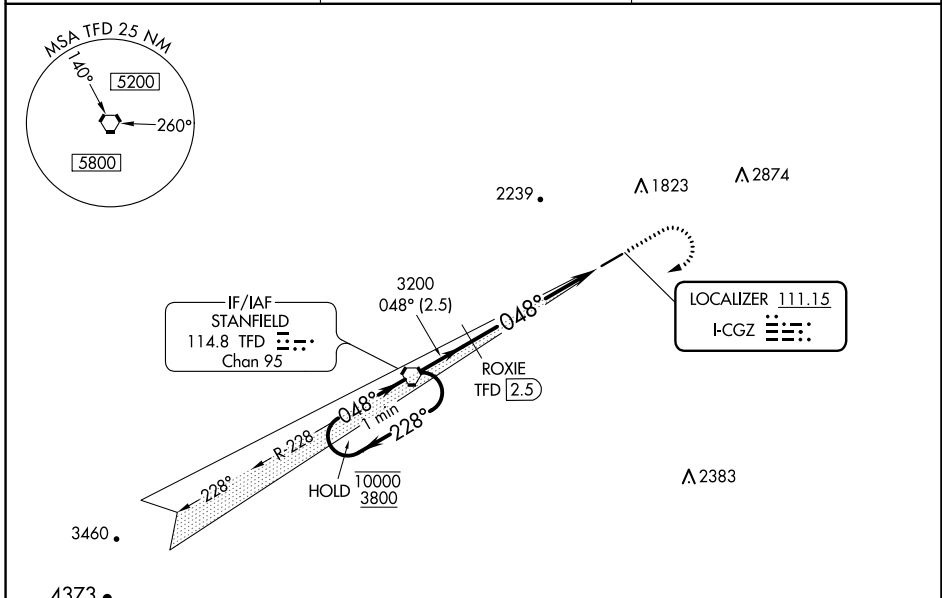
LOC I-CGZ 111.15	APP CRS 048°	Rwy Idg 5200
		TDZE 1458
		Apt Elev 1464

ILS or LOC RWY 5

CASA GRANDE MUNI (CGZ)

DME required for LOC only.		MALSR 	MISSED APPROACH: Climb to 2100 then climbing right turn to 5900 direct STANFIELD VORTAC and hold. Continue climb in hold to 5900.
NA	Circling NA for Cat C and D northwest of Rwy 5-23. Autopilot coupled approach NA below 1650. DME from TFD VORTAC. Simultaneous reception of I-CGZ and TFD DME required. For inop ALS, increase S-LOC 5 Cat C/D visibility to 1 SM.		

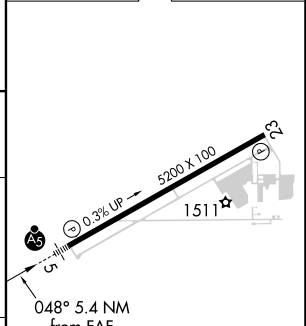
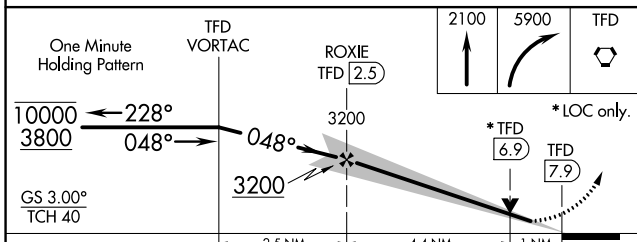
AWOS-3PT 132.175	ALBUQUERQUE CENTER 125.4 269.3	UNICOM 122.7 (CTAF) 0
----------------------------	--	---------------------------------



SW-4, 26 JAN 2023 to 23 FEB 2023

SW-4, 26 JAN 2023 to 23 FEB 2023

ELEV 1464	TDZE 1458
-----------	-----------



CATEGORY	A	B	C	D
S-ILS 5	1708-1/2		250 (300-1/2)	
S-LOC 5	1800-1/2	342 (400-1/2)	1800-5/8	342 (400-5/8)
CIRCLING	1960-1	496 (500-1)	1960-1 1/2 496 (500-1 1/2)	2260-2 1/2 796 (800-2 1/2)

MIRS Rwy 5-23