

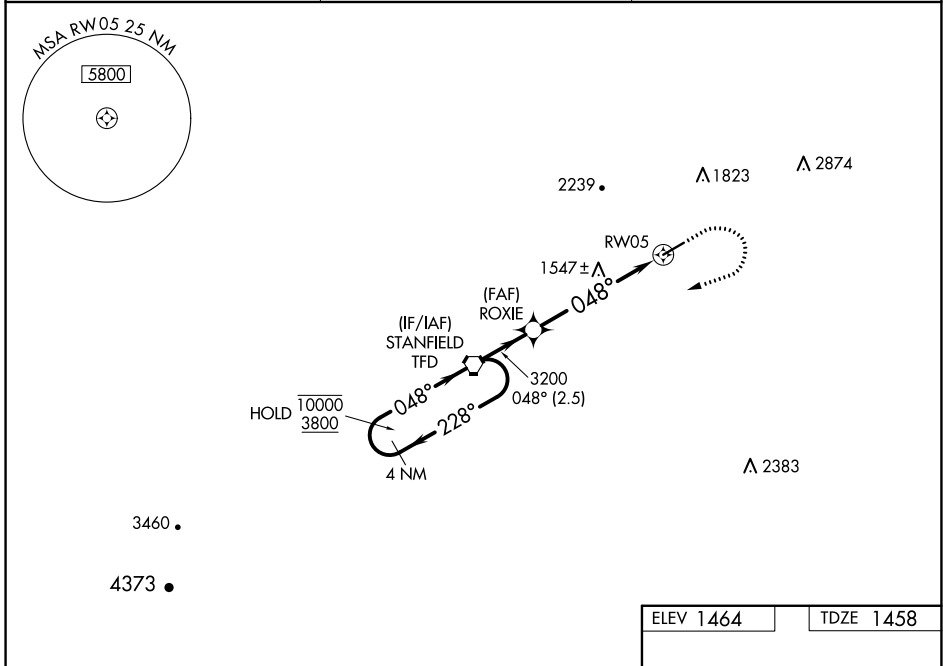
WAAS CH 61042 W05A	APP CRS 048°	Rwy Idg TDZE Apt Elev	5200 1458 1464
--	------------------------	-----------------------------	---

RNAV (GPS) RWY 5

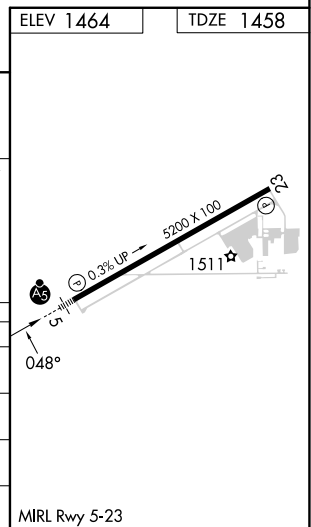
CASA GRANDE MUNI (CGZ)

RNP APCH.	MALSR	MISSED APPROACH: (Do not exceed 240K until TFD VORTAC) Climb to 2000 then climbing right turn to 5900 direct TFD VORTAC and hold. Continue climb in hold to 5900.
<p>▽ For uncompensated Baro-VNAV systems, LNAV/VNAV NA below -17°C or above 54°C. Circling NA for Cat C and D northwest of Rwy 5-23. For inoperative ALS, increase LNAV Cat C/D visibility to 1 SM.</p>		

AWOS-3PT 132.175	ALBUQUERQUE CENTER 125.4 269.3	UNICOM 122.7 (CTAF) 0
----------------------------	--	---------------------------------



4 NM Holding Pattern	TFD VORTAC	ROXIE	2000	5900	TFD
10000 3800	← 228°	3200	↑	↷	⬡
GP 3.00° TCH 40	→ 048°	3200	*LNAV only		
	048°		*1 NM to RW05	RW05	
		2.5 NM	4.4 NM	1 NM	
CATEGORY	A	B	C	D	
LPV DA		1708-½	250 (300-½)		
LNAV/VNAV DA		1708-½	250 (300-½)		
LNAV MDA	1800-½	342 (400-½)	1800-⅝	342 (400-⅝)	
C CIRCLING	1960-1	496 (500-1)	1960-1½ 496 (500-1½)	2260-2½ 796 (800-2½)	



SW-4, 26 JAN 2023 to 23 FEB 2023

SW-4, 26 JAN 2023 to 23 FEB 2023