

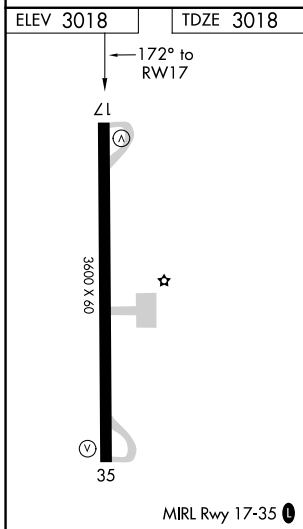
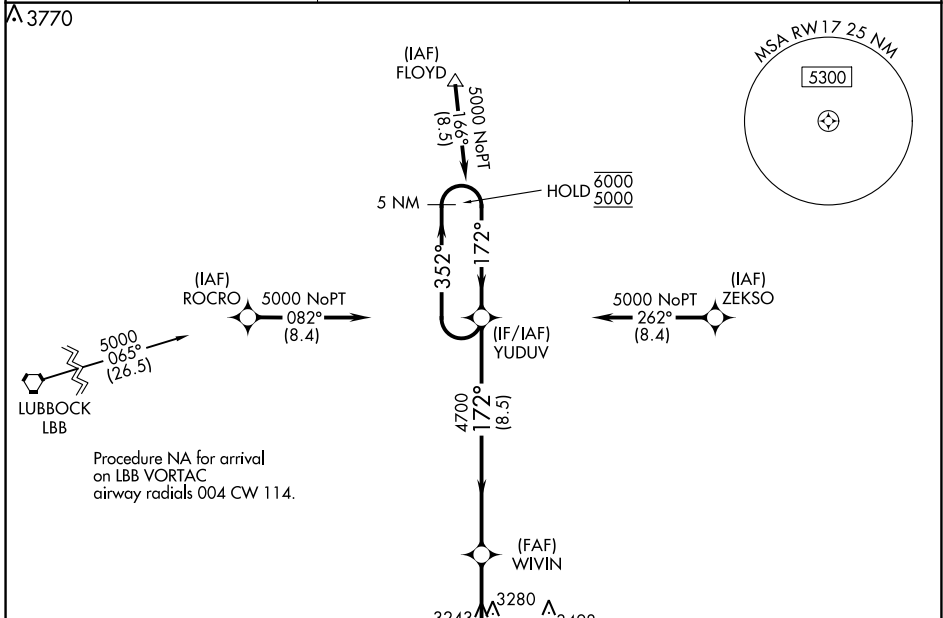
WAAS CH 82722 W17A	APP CRS 172°	Rwy Idg TDZE Apt Elev	3600 3018 3018
--	------------------------	-----------------------------	---

RNAV (GPS) RWY 17

CROSBYTON MUNI (8F3)

RNP APCH.	<p>Procedure NA at night.</p> <p>NA Rwy 17 helicopter visibility reduction below 1 SM NA. Use Lubbock altimeter setting.</p>	MISSED APPROACH: Climb to 5000 direct CEGUT and hold.
-----------	--	---

LBB ASOS 125.3	LUBBOCK APP CON 119.2 351.8	UNICOM 122.8 (CTAF) 0
--------------------------	---------------------------------------	---------------------------------



ELEV 3018	TDZE 3018	MISSED APCH FIX CEGUT	
3511	5000	WIVIN	YUDUV
CEGUT	WIVIN	YUDUV	5 NM Holding Pattern
3.9 NM	4700	352°	6000 / 5000
8.5 NM	4.00° TCH 40	172°	
3.9 NM	8.5 NM		
CATEGORY	A	B	C
LP MDA	3660-1	642 (700-1)	NA
LNAV MDA	3700-1	682 (700-1)	NA

SC-2, 26 JAN 2023 to 23 FEB 2023

SC-2, 26 JAN 2023 to 23 FEB 2023