

VOR/DME LRP 117.3 Chan 120	APP CRS 272°	Rwy Idg 3250 TDZE 458 Apt Elev 458
------------------------------------------------	------------------------	---------------------------------------------------------------

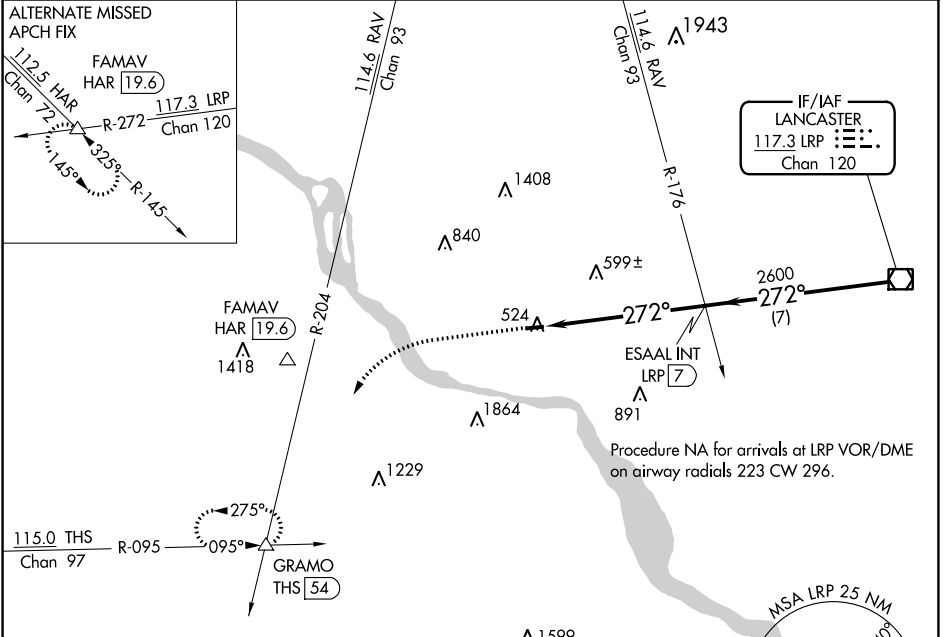
VOR RWY 28

DONEGAL SPRINGS AIRPARK (N71)

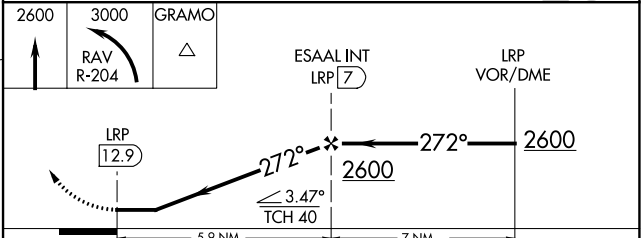
▼ Use Harrisburg Intl altimeter setting; when not received, use Fort Indiantown Gap altimeter setting and increase all MDAs 20 feet.

▲ NA MISSED APPROACH: Climb to 2600 then climbing left turn to 3000 via RAV VORTAC R-204 to GRAMO Int and hold.

HARRISBURG APP CON 126.45 281.525	HARRISBURG CLNC DEL 127.05	UNICOM 122.8 (CTAF) 0
---------------------------------------------	--------------------------------------	---------------------------------



ELEV 458	TDZE 458
-----------------	-----------------



MIRL Rwy 10-28 0

FAF to MAP 5.9 NM

Knots	60	90	120	150	180
Min:Sec	5:54	3:56	2:57	2:22	1:58

CATEGORY	A	B	C	D
S-28	1120 - 1	662 (700-1)	NA	
CIRCLING	1120 - 1	662 (700-1)	NA	

NE-4, 26 JAN 2023 to 23 FEB 2023

NE-4, 26 JAN 2023 to 23 FEB 2023