

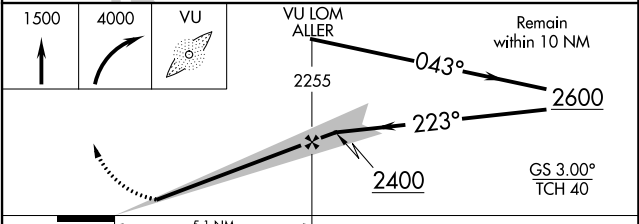
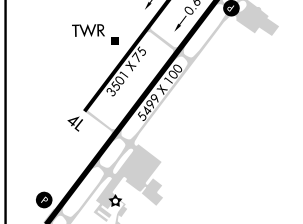
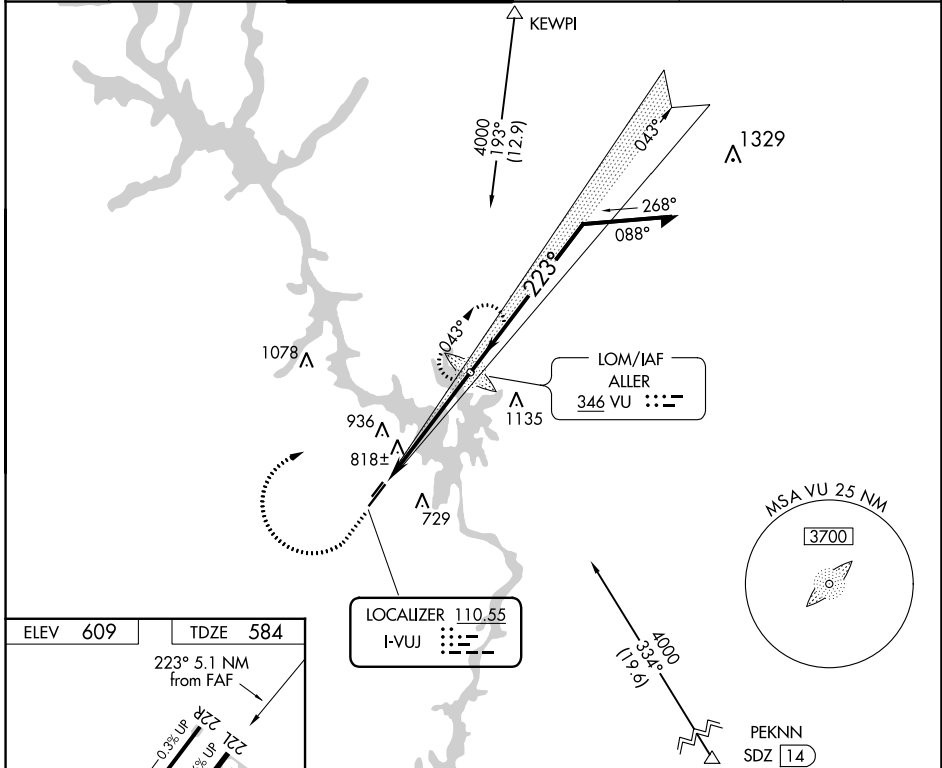
LOC I-VUJ	APP CRS	Rwy Idg	5499
<b>110.55</b>	<b>223°</b>	TDZE	584
		Apt Elev	609

# ILS or LOC RWY 22L

STANLY COUNTY (VUJ)

ADF required.		<p>⚠ Circling Rwy 4L, 22R NA at night. Rwy 22L helicopter visibility reduction below ¾ SM NA.</p>		<p>MISSED APPROACH: Climb to 1500 then climbing right turn to 4000 direct ALLER LOM and hold, continue climb-in-hold to 4000.</p>	
---------------	--	-------------------------------------------------------------------------------------------------------	--	-----------------------------------------------------------------------------------------------------------------------------------	--

AWOS-3	CHARLOTTE APP CON	STANLY COUNTY TOWER*	GND CON	CLNC DEL	UNICOM
128.175	128.325 307.8	126.275 (CTAF) <b>0 291.9</b>	121.75 254.375	121.75 254.375	123.0



ELEV 609		TDZE 584	
223° 5.1 NM from FAF			
<p>REIL Rwy 4R and 22L</p> <p>MIRL Rwy 4L-22R</p> <p>HIRL Rwy 4R-22L</p>			
FAF to MAP 5.1 NM			
Knots	60	90	120 150 180
Min:Sec	5:06	3:24	2:33 2:02 1:42
CIRCLING	1260-1	651 (700-1)	1260-1 3/4 651 (700-1 3/4) 1380-2 1/2 771 (800-2 1/2)

SE-2, 26 JAN 2023 to 23 FEB 2023

SE-2, 26 JAN 2023 to 23 FEB 2023