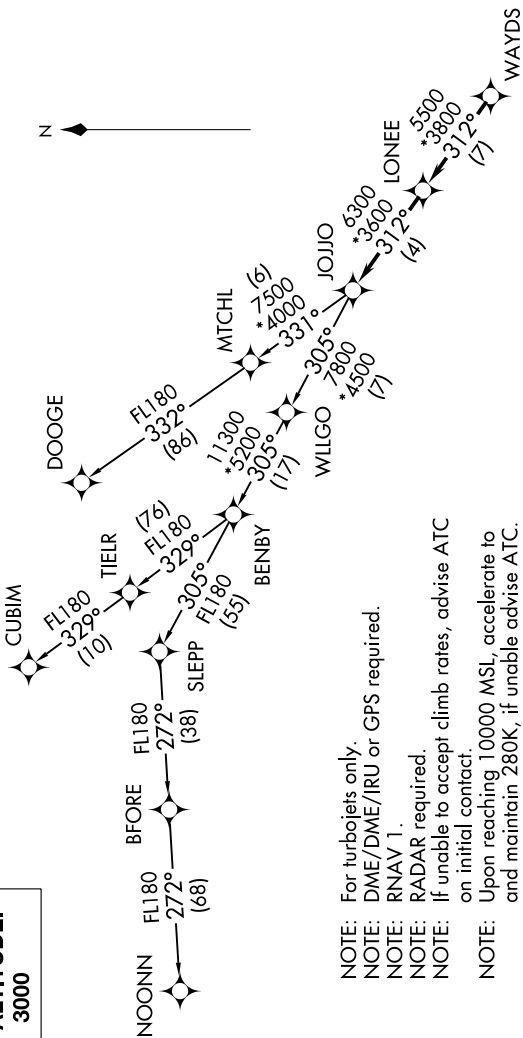


# JOJO FOUR DEPARTURE (RNAV)

AWOS-3  
128.175  
CLNC DEL  
121.75 254.375  
GND CON  
121.75 254.375  
STANLY COUNTY TOWER★  
126.275 (CTAF) 291.9  
UNICOM  
123.0  
CHARLOTTE DEP CON  
128.325 307.8



- NOTE: For turbojets only.
- NOTE: DME/DME/IRU or GPS required.
- NOTE: RNAV 1.
- NOTE: RADAR required.
- NOTE: If unable to accept climb rates, advise ATC on initial contact.
- NOTE: Upon reaching 10000 MSL, accelerate to and maintain 280K, if unable advise ATC.
- NOTE: NOONN TRANSITION ATC assigned only.

**TOP ALTITUDE:**  
3000

### TAKEOFF MINIMUMS

Rwys 4L, 22R: NA.  
Rwy 22L: Standard.  
Rwy 4R: 300-1½ or standard with minimum climb of 276' per NM to 1000.

### DEPARTURE ROUTE DESCRIPTION

Climb on heading assigned by ATC, expect RADAR vectors to WAYDS, then on depicted route to JOJO. Then on assigned transition. Maintain 3000, expect clearance to filed altitude within 10 minutes after departure.

CUBIM TRANSITION (JOJO4.CUBIM)  
DOOGE TRANSITION (JOJO4.DOOGE)  
NOONN TRANSITION (JOJO4.NOONN)

NOTE: Chart not to scale.