

(KWEEN4.KWEEN) 19003

AL-6707 (FAA)

STANLY COUNTY (VUJ)  
ALBEMARLE, NORTH CAROLINA

# KWEEN FOUR DEPARTURE (RNAV)

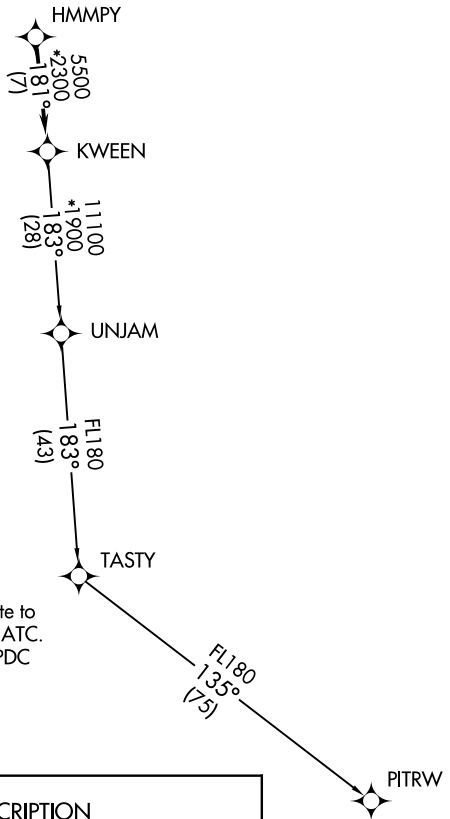
AWOS-3  
128.175  
CLNC DEL  
121.75 254.375  
GND CON  
121.75 254.375  
STANLY COUNTY TOWER ★  
126.275 (CTAF) 291.9  
UNICOM  
123.0  
CHARLOTTE DEP CON  
128.325 307.8

**TOP ALTITUDE:  
3000**



### TAKEOFF MINIMUMS

Rwys 4L, 22R: NA.  
Rwy 22L: Standard.  
Rwy 4R: 300-1½ or standard with minimum  
climb of 276' per NM to 1000.



- NOTE: For turbojets only.
- NOTE: DME/DME/IRU or GPS required.
- NOTE: RNAV 1.
- NOTE: RADAR required.
- NOTE: If unable to accept climb rates, advise ATC on initial contact.
- NOTE: Upon reaching 10000 MSL, accelerate to and maintain 280K, if unable advise ATC.
- NOTE: Transponder code will be issued via PDC or Charlotte CLNC DEL.

NOTE: Chart not to scale.



### DEPARTURE ROUTE DESCRIPTION

Climb on heading assigned by ATC, expect RADAR vectors to HMMPY, then on track 181° to KWEEN, then on assigned transition, maintain 3000, expect filed altitude within 10 minutes after departure.

PITRW TRANSITION (KWEEN4.PITRW)  
UNJAM TRANSITION (KWEEN4.UNJAM)

# KWEEN FOUR DEPARTURE (RNAV)

(KWEEN4.KWEEN) 03JAN19

ALBEMARLE, NORTH CAROLINA  
STANLY COUNTY (VUJ)

SE-2, 26 JAN 2023 to 23 FEB 2023

SE-2, 26 JAN 2023 to 23 FEB 2023