

| | | | |
|--|------------------------|-----------------------------|---|
| WAAS CH 49117 W04A | APP CRS 043° | Rwy Idg TDZE Apt Elev | 5499 609 609 |
|--|------------------------|-----------------------------|---|

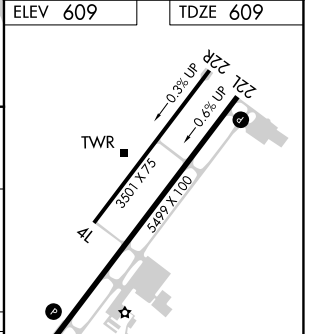
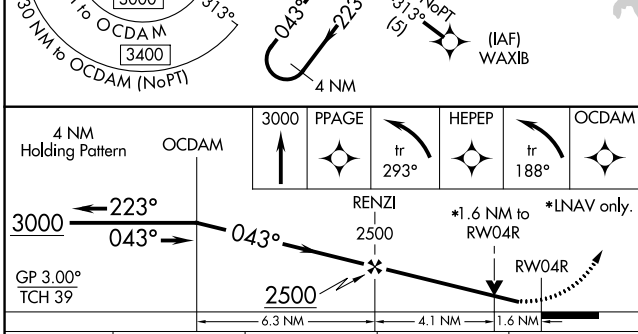
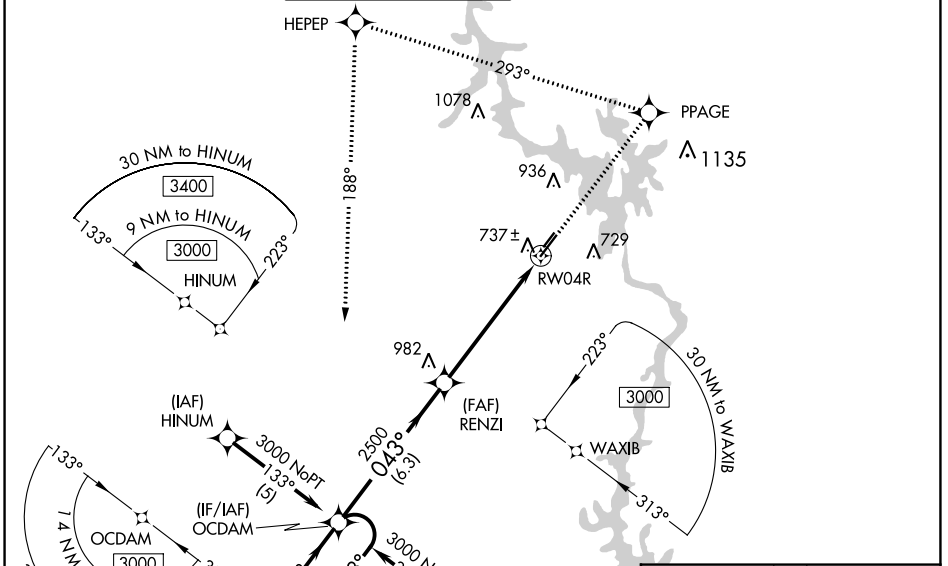
RNAV (GPS) RWY 4R

STANLY COUNTY (VUJ)

PAR Circling to Rwy 4L/22R NA at night. For uncompensated Baro-VNAV systems, LNAV/VNAV NA below -16°C (4°F) or above 47°C (116°F). DME/DME RNP-0.3 NA. Visibility reduction by helicopters NA. When local altimeter setting not received, use Asheboro altimeter setting and increase LPV DA to 929, LNAV/VNAV DA to 1083, and all MDA 60 feet; increase LPV all Cats, LNAV/VNAV all Cats, LNAV Cats C and D, and Circling Cats C and D visibility ¼ mile. Baro-VNAV NA when using Asheboro altimeter setting. VDP NA with Asheboro altimeter setting.

MISSED APPROACH: Climb to 3000 direct PPAGE and left turn on track 293° to HEPEP and left turn on track 188° to OCDAM and hold.

| | | | | | |
|--------------------------|---|---|----------------------------------|-----------------------------------|------------------------|
| AWOS-3 128.175 | CHARLOTTE APP CON 128.325 307.8 | STANLY COUNTY TOWER* 126.275 (CTAF) 0 291.9 | GND CON 121.75 254.375 | CLNC DEL 121.75 254.375 | UNICOM 123.0 |
|--------------------------|---|---|----------------------------------|-----------------------------------|------------------------|



| | | | | |
|--------------|----------------------|----------------------|----------------------|----------------------|
| CATEGORY | A | B | C | D |
| LPV DA | 876-1 267 (300-1) | | | |
| LNAV/VNAV DA | 1030-1½ 421 (500-1½) | | | |
| LNAV MDA | 1160-1 551 (600-1) | 1160-1½ 551 (600-1½) | 1160-1¾ 551 (600-1¾) | 1160-1¾ 551 (600-1¾) |
| CIRCLING | 1260-1 651 (700-1) | 1260-1¾ 651 (700-1¾) | 1380-2½ 771 (800-2½) | |

| | |
|----------|----------|
| ELEV 609 | TDZE 609 |
|----------|----------|

REIL Rwy 4R and 22L
MIRL Rwy 4L-22R
HIRL Rwy 4R-22L

SE-2, 26 JAN 2023 to 23 FEB 2023

SE-2, 26 JAN 2023 to 23 FEB 2023