

WAAS CH 70437 W28A	APP CRS 276°	Rwy Idg TDZE Apt Elev	5002 3142 3178
--	------------------------	-----------------------------	---

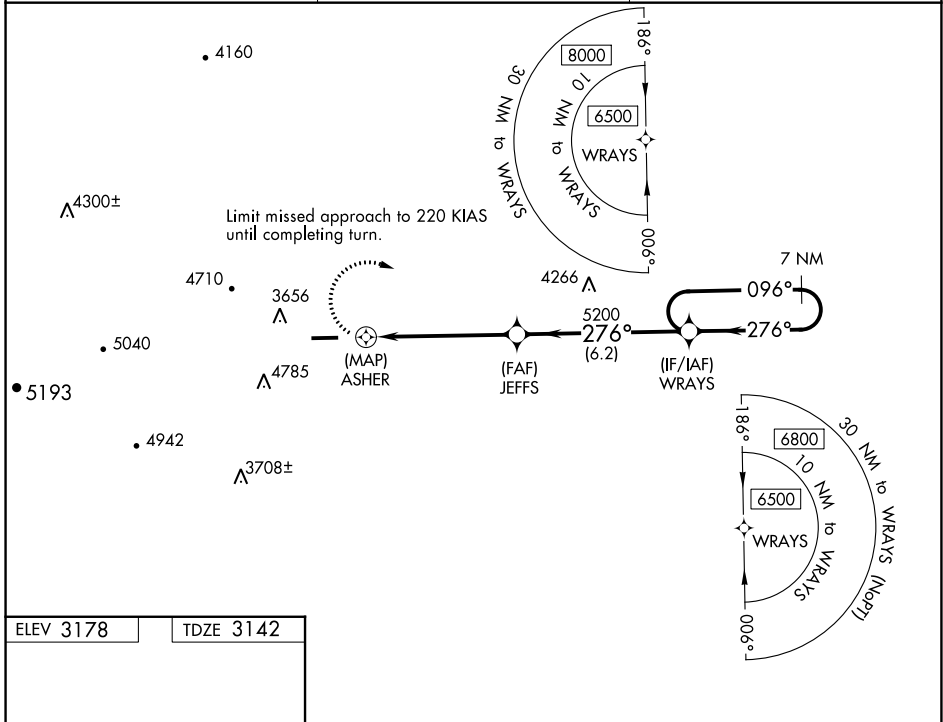
RNAV (GPS) RWY 28

ASHE COUNTY (GEV)

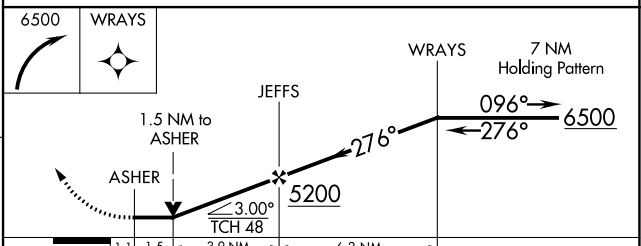
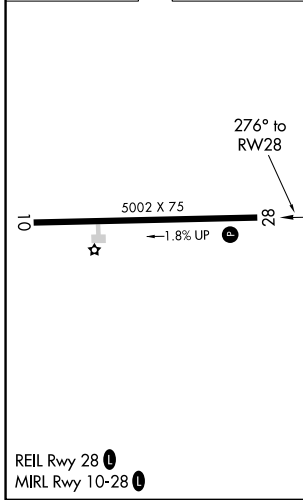
⚠ Circling Rwy 10 NA at night. Circling NA for Cat D north of Rwy 10-28. DME/DME RNP-0.3 NA.
 ⚠ Rwy 28 helicopter visibility reduction below ¼ SM NA. VDP NA when using Marion/Wytheville altimeter setting. When local altimeter setting not received, use Marion/Wytheville altimeter setting and increase all MDA 160 feet and LP and LNAV Cat B visibility ¼ mile and LP and LNAV Cats C/D visibility ½ mile. Cats C/D Circling NA when using Marion/Wytheville altimeter setting.

MISSED APPROACH:
Climbing right turn to 6500 direct WRAYS and hold.

AWOS-3 120.675	ATLANTA CENTER 125.15 263.0	UNICOM 122.8 (CTAF) ①
--------------------------	---------------------------------------	---------------------------------



ELEV 3178	TDZE 3142
-----------	-----------



CATEGORY	A	B	C	D
LP MDA	3960-1¼	818 (800-1¼)	3960-2½	818 (800-2½)
LNAV MDA	4060-1¼	918 (900-1¼)	4060-2½	918 (900-2½)
C CIRCLING	4240-1¼ 1062 (1100-1¼)	4240-1½ 1062 (1100-1½)	5140-3	1962 (2000-3)

SE-2, 26 JAN 2023 to 23 FEB 2023

SE-2, 26 JAN 2023 to 23 FEB 2023