

APP CRS 259°	Rwy Idg TDZE Apt Elev	3498 1047 1051
------------------------	-----------------------------	---

RNAV (GPS) RWY 26

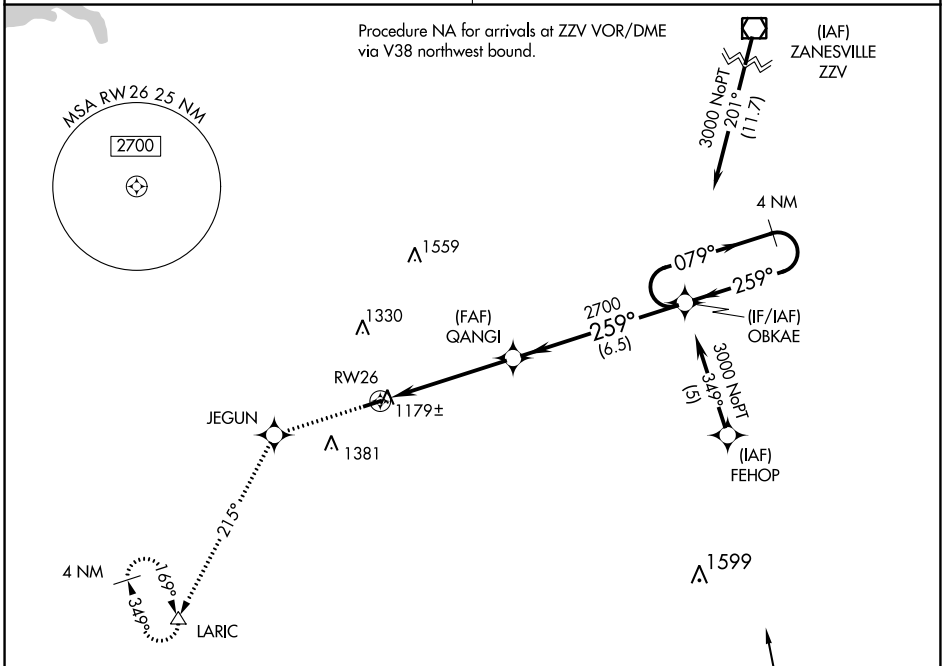
PERRY COUNTY (I86)

NA DME/DME RNP-0.3 NA. Visibility reduction by helicopters NA. Use Zanesville altimeter setting; when not received, use Lancaster altimeter setting and increase all MDA 20 feet. Procedure NA at night.

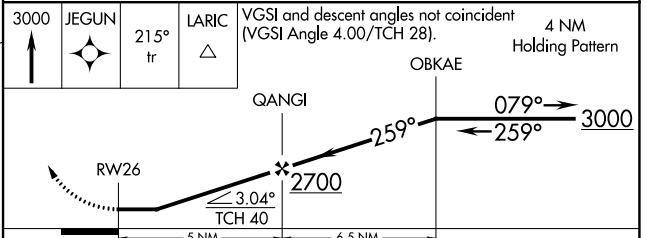
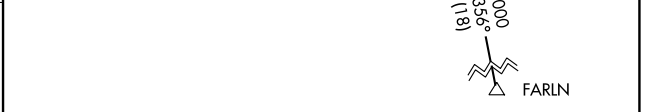
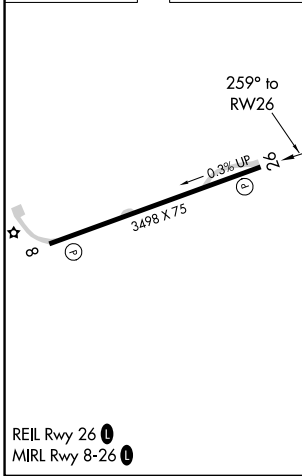
MISSED APPROACH: Climb to 3000 direct JEGUN and via 215° track to LARIC and hold.

INDIANAPOLIS CENTER
124.45 370.9

UNICOM
122.8 (CTAF)



ELEV 1051	TDZE 1047
-----------	-----------



CATEGORY	A	B	C	D
LNAV MDA	1620 - 1	573 (600-1)	1620 - 1½ 573 (600-1½)	NA
CIRCLING	1620 - 1	569 (600-1)	1620 - 1½ 569 (600-1½)	NA