

WAAS CH 49016 W34A	APP CRS 346°	Rwy Idg TDZE Apt Elev	6101 5012 5024
--	------------------------	-----------------------------	---

RNAV (GPS) RWY 34

MC CALL MUNI (MYL)

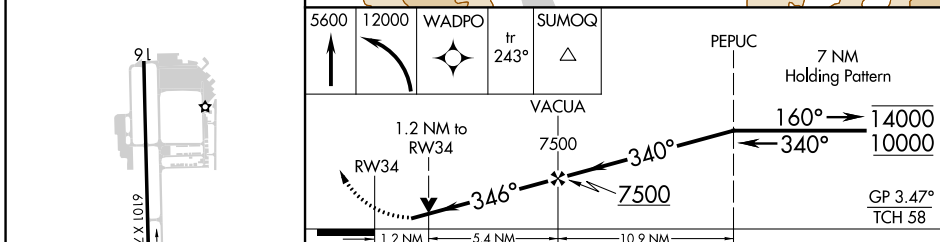
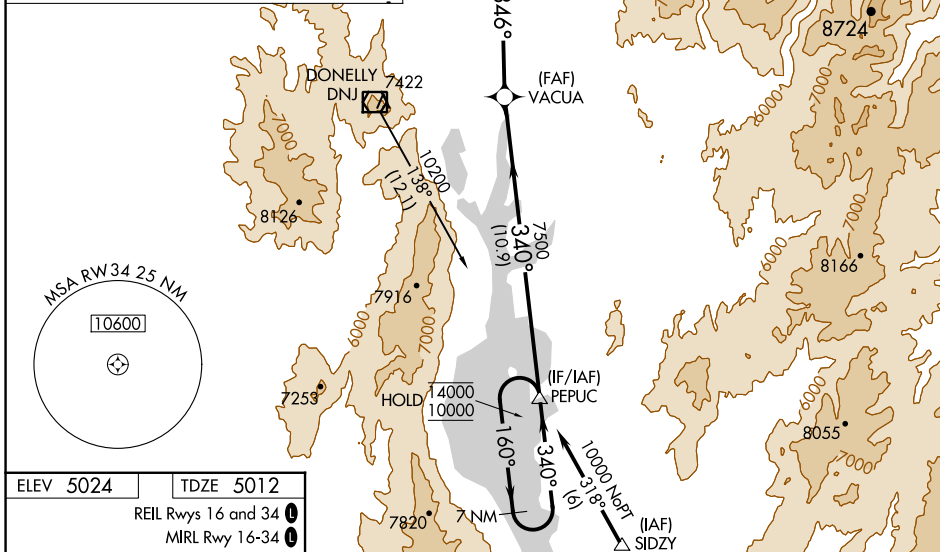
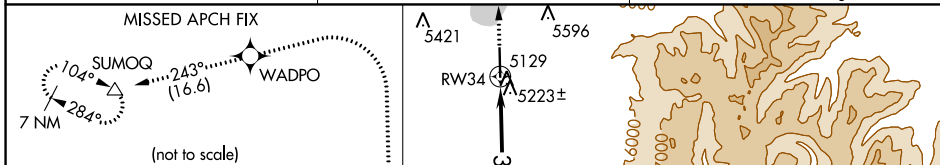
RNP AR APCH - GPS.

For uncompensated Baro-VNAV systems, LNAV/VNAV NA below -24°C or above 40°C. When local altimeter setting not received, procedure NA. Rwy 34 helicopter visibility reduction below 3/4 SM NA. Circling Rwy 16 NA at night.

MISSED APPROACH: Climb to 5600, then climbing left turn to 2000 direct WADPO and on track 243° to SUMOQ and hold, continue climb-in-hold to 12000.

*Missed approach requires minimum climb of 265 feet per NM to 6380.

ASOS 119.925	SALT LAKE CENTER 128.05 306.95	UNICOM 122.8 (CTAF) 0
------------------------	--	---------------------------------



ELEV 5024	TDZE 5012	REIL Rwy 16 and 34 0		MIRL Rwy 16-34 0	
CATEGORY		A	B	C	D
LPV	DA	5375-1		363 (400-1)	
LNAV/VNAV	DA	5683-1 1/8		671 (700-1 1/8)	
LNAV	MDA*	5520-1		508 (500-1)	
LNAV	MDA	5680-1		668 (700-1)	
CIRCLING		5700-1		6660-3	
		676 (700-1)		1636 (1700-3)	

NW-1, 26 JAN 2023 to 23 FEB 2023

NW-1, 26 JAN 2023 to 23 FEB 2023