

|                                 |                        |                             |   |
|---------------------------------|------------------------|-----------------------------|---|
| WAAS<br>CH <b>70519</b><br>W33A | APP CRS<br><b>332°</b> | Rwy Idg<br>TDZE<br>Apt Elev | <b>5006</b><br><b>131</b><br><b>132</b> |
|---------------------------------|------------------------|-----------------------------|---|

# RNAV (GPS) RWY 33

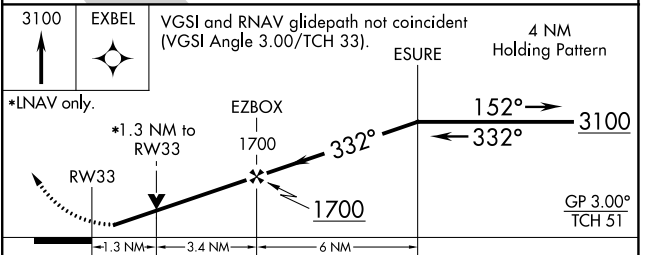
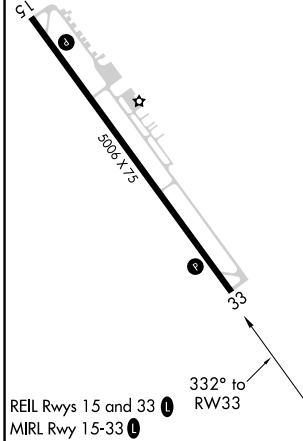
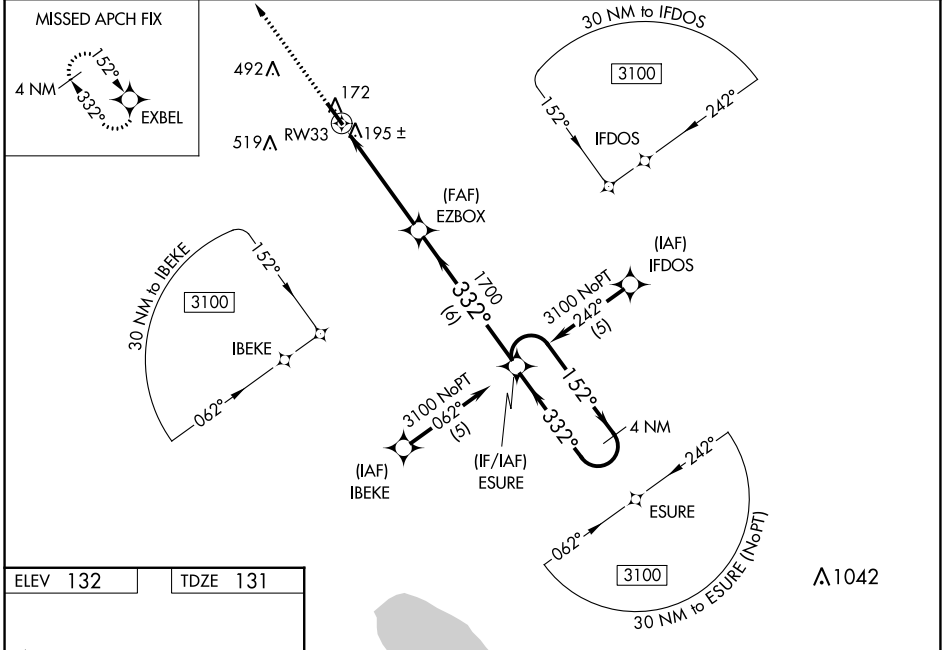
CURTIS L BROWN JR FLD (EYF)

**RNP APCH.**

**⚠** Rwy 33 helicopter visibility reduction below 3/4 SM NA. When local altimeter setting not received, use Fayetteville, NC altimeter setting; increase LPV DA to 453 feet, LNAV/VNAV DA to 537 feet, and all MDAs 80 feet, and increase LPV and LNAV/VNAV all Cats visibility 1/4 SM, LNAV Cats C and D and Circling Cats C and D visibility 1/4 SM. Baro-VNAV and VDP NA when using Fayetteville, NC altimeter setting. For uncompensated Baro-VNAV systems, LNAV/VNAV NA below -1.5°C (5°F) or above 48°C (118°F).

**MISSED APPROACH:** Climb to 3100 direct EXBEL and hold.

|                           |   |                               |
|---------------------------|---|-------------------------------|
| AWOS-3P<br><b>119.475</b> | FAYETTEVILLE APP CON<br><b>133.0 290.25</b> | UNICOM<br><b>122.8 (CTAF)</b> |
|---------------------------|---|-------------------------------|



| CATEGORY     | A                    | B                    | C                            | D                            |
|--------------|----------------------|----------------------|------------------------------|------------------------------|
| LPV DA       |                      | 381-3/4              | 250 (300-3/4)                |                              |
| LNAV/VNAV DA |                      | 465-1 1/4            | 334 (400-1 1/4)              |                              |
| LNAV MDA     | 580-1                | 449 (500-1)          | 580-1 1/4<br>449 (500-1 1/4) | 580-1 1/2<br>449 (500-1 1/2) |
| CIRCLING     | 580-1<br>448 (500-1) | 660-1<br>528 (600-1) | 880-2 1/4<br>748 (800-2 1/4) | 880-2 1/2<br>748 (800-2 1/2) |

SE-2, 26 JAN 2023 to 23 FEB 2023

SE-2, 26 JAN 2023 to 23 FEB 2023