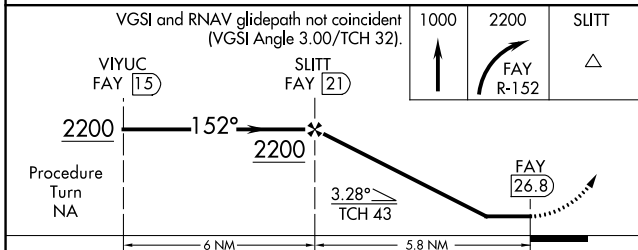
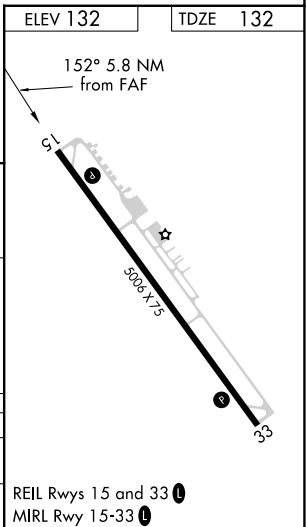
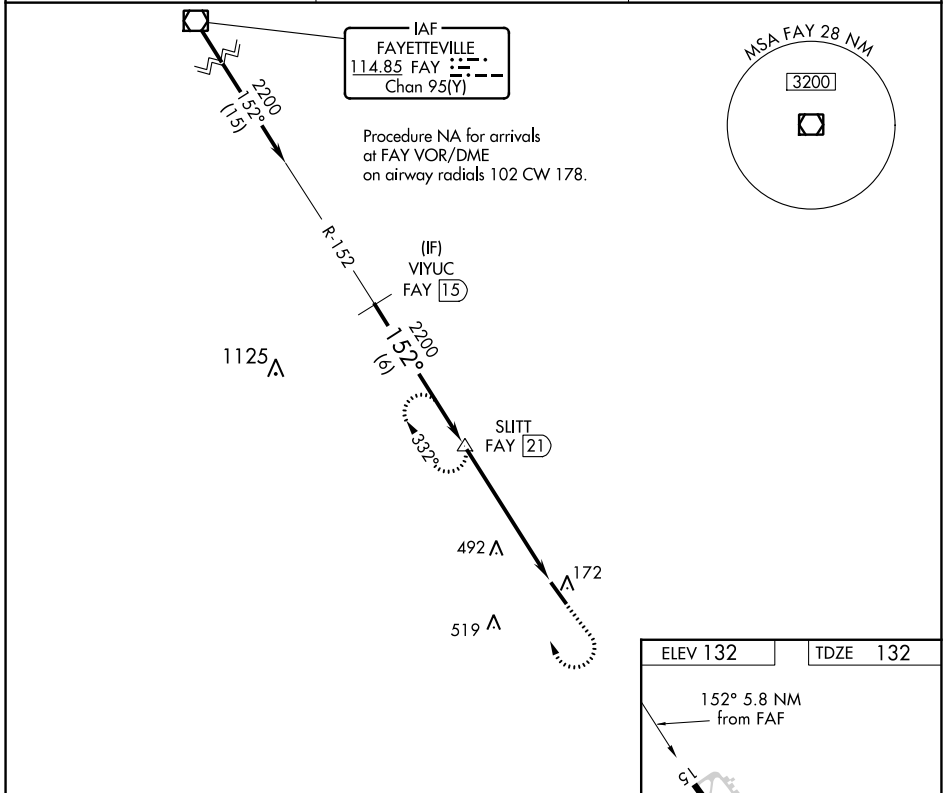


VOR/DME <b>FAY</b> <b>114.85</b> Chan <b>95(Y)</b>	APP CRS <b>152°</b>	Rwy Idg TDZE Apt Elev	<b>5006</b> <b>132</b> <b>132</b>
--	------------------------	-----------------------------	---

**VOR/DME RWY 15**  
CURTIS L BROWN JR FLD (EYF)

**▽** Visibility reduction by helicopters NA. When local altimeter setting not received, use Fayetteville altimeter setting; increase all MDA 80 feet and increase S-15 Cats C and D and Circling Cat C and D visibility ¼ SM.  
**▲** MISSED APPROACH: Climb to 1000 then climbing right turn to 2200 on FAY R-152 to SLITT/21 DME and hold.

AWOS-3P <b>119.475</b>	FAYETTEVILLE APP CON <b>133.0 290.25</b>	UNICOM <b>122.8 (CTAF) 1</b>
---------------------------	---	---------------------------------



CATEGORY	A	B	C	D
S-15	760-1 628 (700-1)	760-1¼ 628 (700-1¼)	760-1¾ 628 (700-1¾)	760-2 628 (700-2)
CIRCLING	760-1 628 (700-1)	760-1¼ 628 (700-1¼)	880-2¼ 748 (800-2¼)	880-2½ 748 (800-2½)

SE-2, 26 JAN 2023 to 23 FEB 2023

SE-2, 26 JAN 2023 to 23 FEB 2023