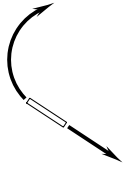


DENVER DEP CON
125.12 263.02

**TOP ALTITUDE:
FL230**



TAKEOFF MINIMUMS

Rwy 11: Standard.

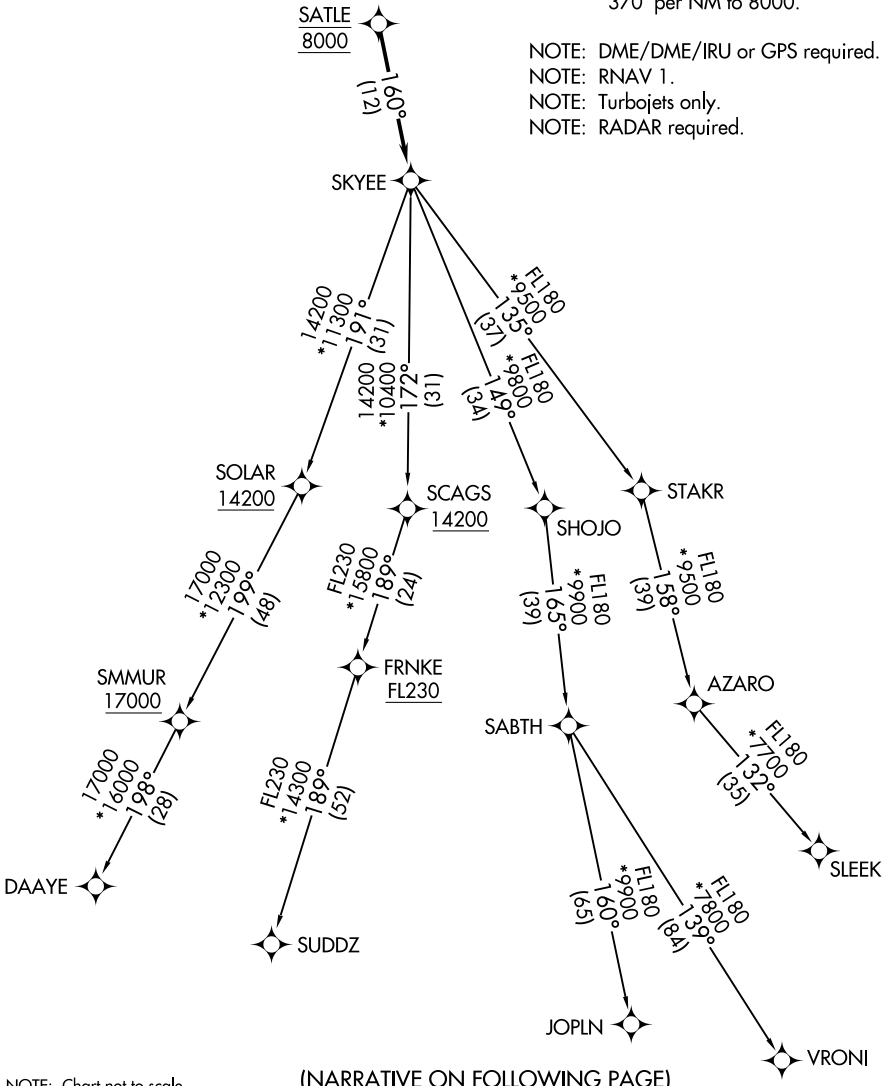
Rwy 29: Standard with minimum climb of
370' per NM to 8000.

NOTE: DME/DME/IRU or GPS required.

NOTE: RNAV 1.

NOTE: Turbojets only.

NOTE: RADAR required.



SW-1, 26 JAN 2023 to 23 FEB 2023

SW-1, 26 JAN 2023 to 23 FEB 2023

NOTE: Chart not to scale.

(NARRATIVE ON FOLLOWING PAGE)