

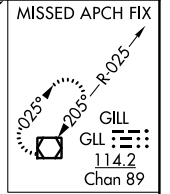
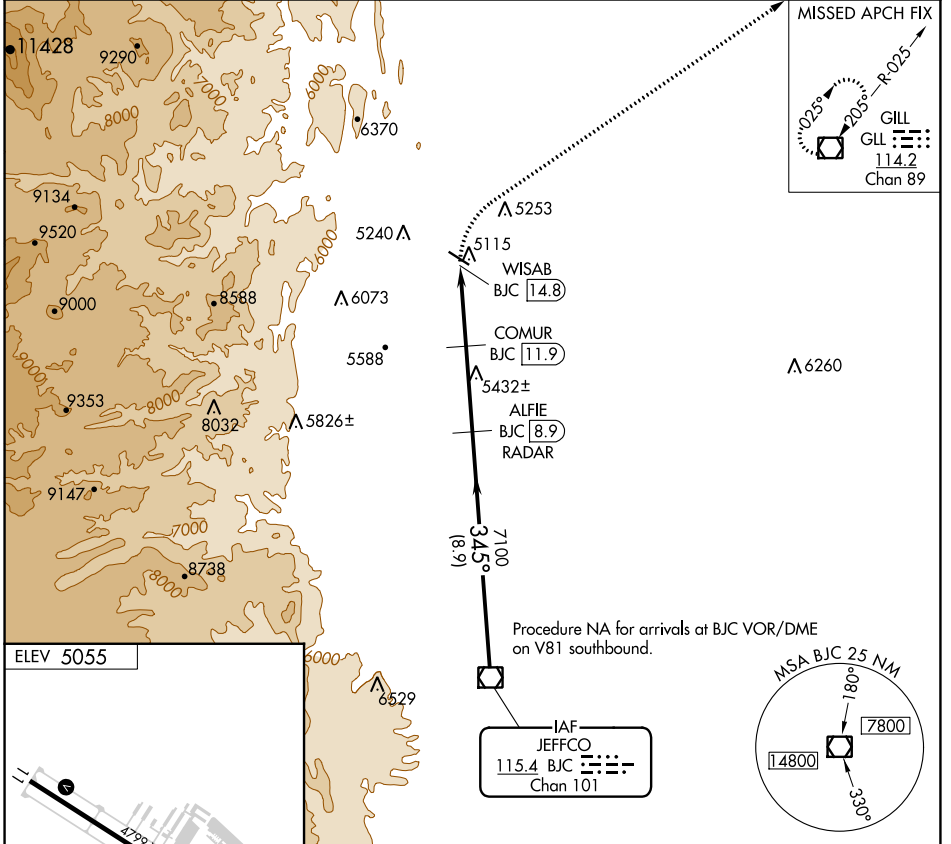
VOR/DME BJC <b>115.4</b> Chan <b>101</b>	APP CRS <b>345°</b>	Rwy Idg TDZE Apt Elev	<b>N/A</b> <b>N/A</b> <b>5055</b>
--	------------------------	-----------------------------	---

# VOR/DME-A VANCE BRAND (LMO)

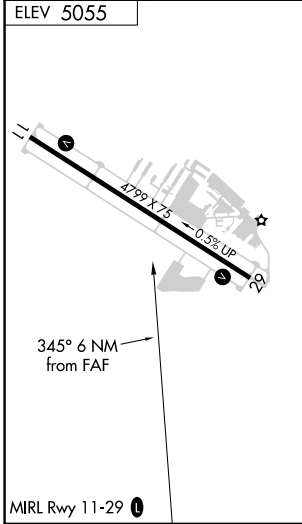
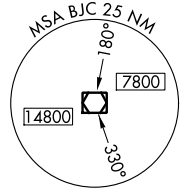
**⚠** When local altimeter setting not received, use Denver Intl altimeter setting and increase all MDA 120 feet; and increase Cat C visibility ½ mile and Cat D ¼ mile.

**MISSED APPROACH:** Climbing right turn to 7000 direct GLL VOR/DME and hold.

AWOS-3 <b>120.0</b>	DENVER APP CON <b>125.12 263.02</b>	UNICOM <b>122.975 (CTAF)</b> <b>📻</b>
------------------------	--	--



Procedure NA for arrivals at BJC VOR/DME on V81 southbound.



7000	GLL	ALFIE BJC [8.9] RADAR	BJC VOR/DME
6020	WISAB BJC [14.8]	COMUR BJC [11.9]	9200
2.9 NM	3.1 NM	8.9 NM	
CATEGORY	A	B	C
CIRCLING	5640-1	585 (600-1)	5880-2½ 825 (900-2½)
			D
			6500-3 1445 (1500-3)

SW-1, 26 JAN 2023 to 23 FEB 2023

SW-1, 26 JAN 2023 to 23 FEB 2023