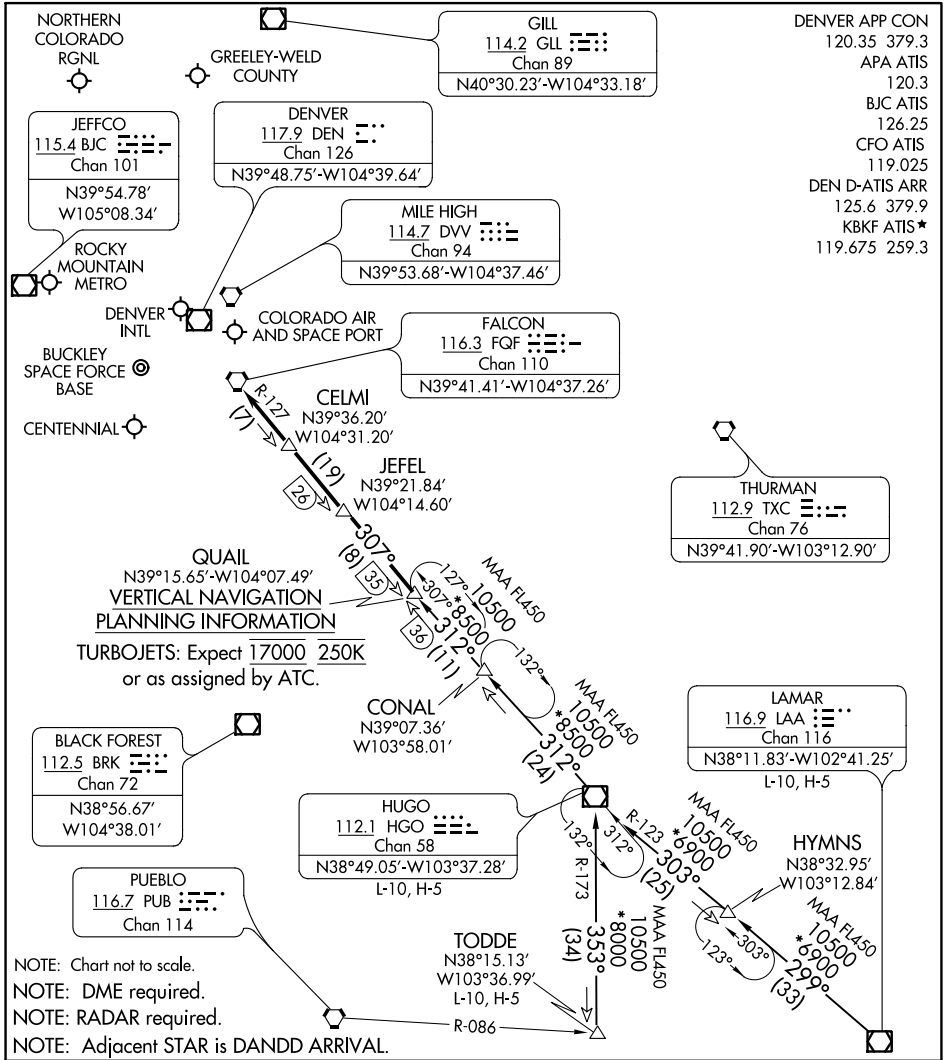


# QUAIL ONE ARRIVAL

AL-9077 (FAA)

DENVER, COLORADO



## ARRIVAL ROUTE DESCRIPTION

**HUGO TRANSITION (HGO.QUAIL1):** From over HGO VOR/DME on HGO R-312 to QUAIL. Thence. . .

**LAMAR TRANSITION (LAA.QUAIL1):** From over LAA VOR/DME on LAA R-299 and HGO R-123 to HGO VOR/DME, then on HGO R-312 to QUAIL. Thence. . .

**TODDE TRANSITION (TODDE.QUAIL1):** From over TODDE on HGO R-173 to HGO VOR/DME, then on HGO R-312 to QUAIL. Thence. . .

. . . from over QUAIL on HGO R-312 and FQF R-127 to FQF VORTAC. Expect RADAR vectors to the final approach course at or before FQF VORTAC.