

# KABEE THREE ARRIVAL (RNAV)

CONCORD, NORTH CAROLINA

- CHARLOTTE APP CON 126.15 282.325
- CLT D-ATIS ARR 121.15
- JQF ATIS \* 133.675
- RUQ AWOS-3 118.175
- SVH AWOS-3 119.225
- VUJ AWOS-3 128.175
- CONCORD TOWER \* 134.65 (CTAF)
- STANLY TOWER \* 126.275 (CTAF) 291.9

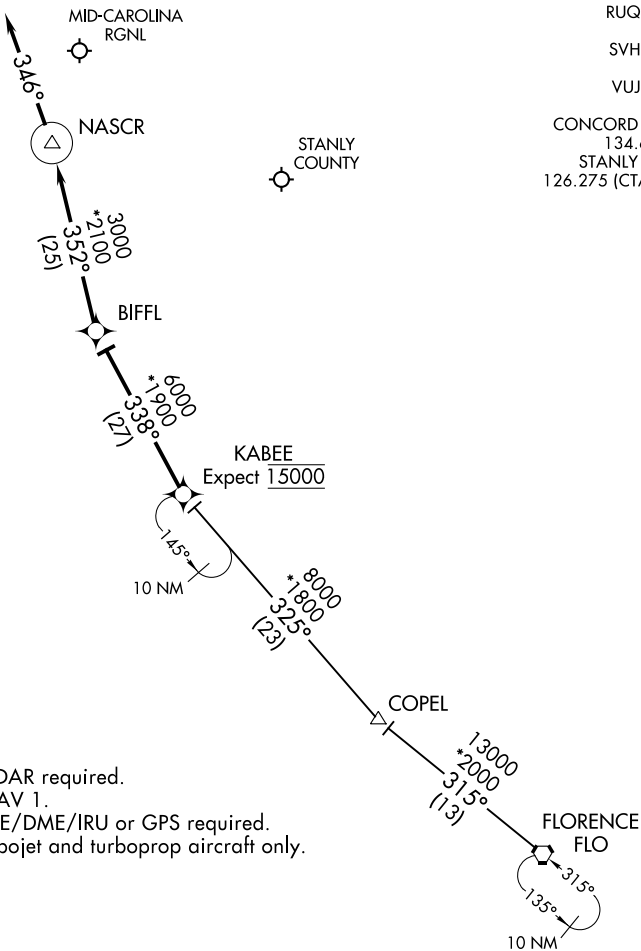
STATESVILLE  
RGNL

MID-CAROLINA  
RGNL

NASC

STANLY  
COUNTY

CONCORD-  
PADGETT  
RGNL



- NOTE: RADAR required.
- NOTE: RNAV 1.
- NOTE: DME/DME/IRU or GPS required.
- NOTE: Turbojet and turboprop aircraft only.

NOTE: Chart not to scale.

## ARRIVAL ROUTE DESCRIPTION

### FLORENCE TRANSITION (FLO.KABEE3)

From KABEE on track 338° to BIFFL, then on track 352° to NASCR, then on heading 346°, expect RADAR vectors to final approach course.