

WAAS CH 82720 W18A	APP CRS 177°	Rwy Idg TDZE Apt Elev	5500 903 910
--	------------------------	-----------------------------	---

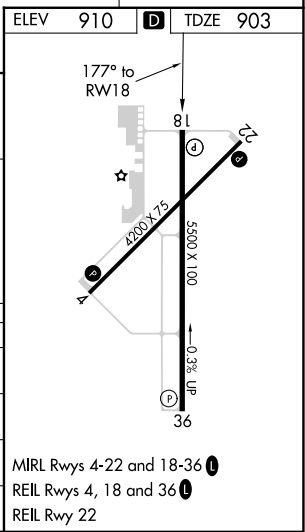
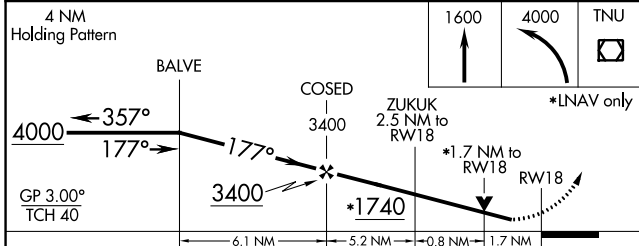
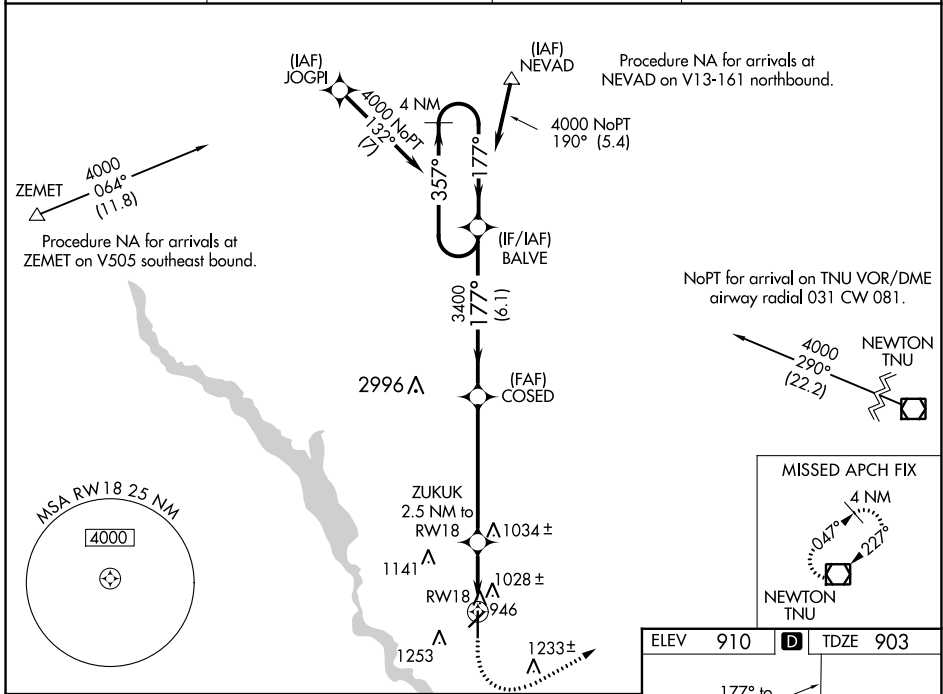
RNAV (GPS) RWY 18

ANKENY RGNL (IKV)

⚠ For uncompensated Baro-VNAV systems, LNAV/VNAV NA below -21° C (-5°F) or above 54°C (130°F). Circling Rwy 22 NA at night. Rwy 18 helicopter visibility reduction below ¾ SM NA. DME/DME RNP-0.3 NA.

MISSED APPROACH: Climb to 1600 then climbing left turn to 4000 direct TNU VOR/DME and hold.

AWOS-3 119.175	DES MOINES APP CON 123.9 307.15	CLNC DEL 126.65	UNICOM 122.9 (CTAF) Ⓛ
--------------------------	---	---------------------------	---------------------------------



NC-3, 26 JAN 2023 to 23 FEB 2023

NC-3, 26 JAN 2023 to 23 FEB 2023