

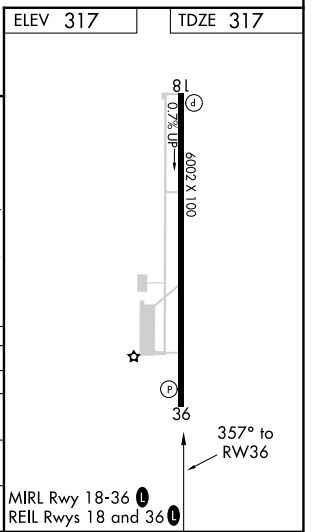
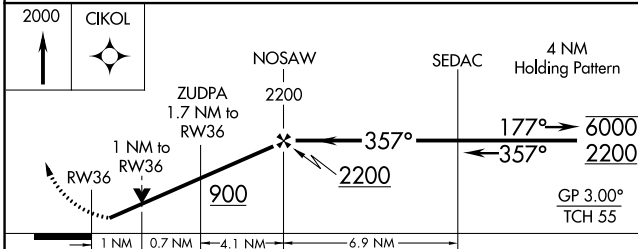
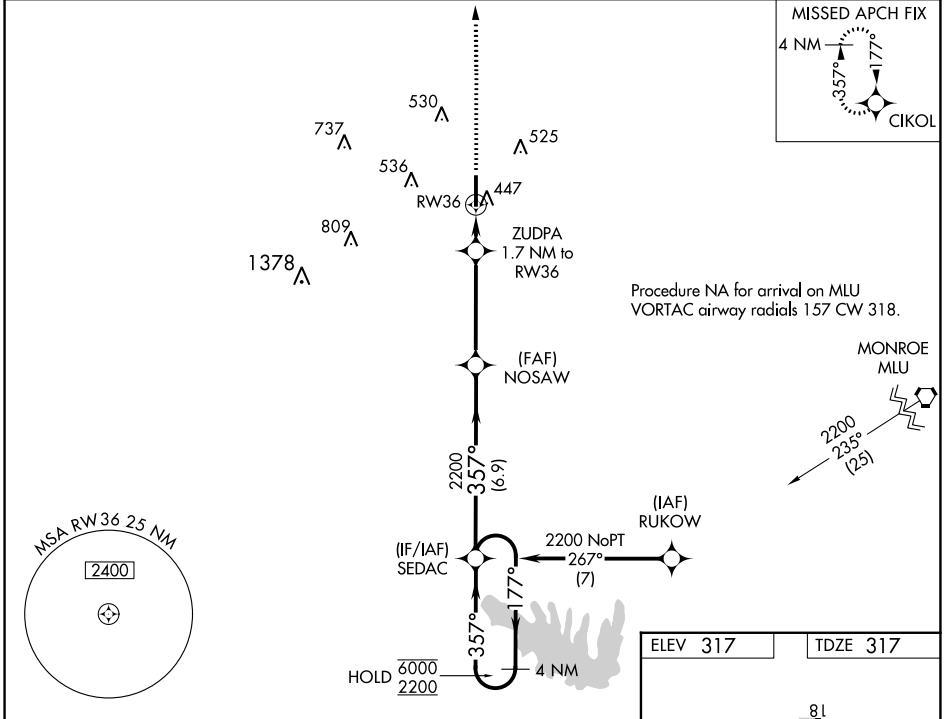
WAAS CH 86722 W36A	APP CRS 357°	Rwy Idg TDZE Apt Elev	6002 317 317
--	------------------------	-----------------------------	---

RNAV (GPS) RWY 36

RUSTON RGNL (RSN)

RNP APCH-GPS.	MISSED APPROACH: Climb to 2000 direct CIKOL and hold.
<p>▼ Rwy 36 helicopter visibility reduction below ¼ SM NA.</p> <p>▲ For uncompensated Baro-VNAV systems, LNAV/VNAV NA below -15°C or above 54°C.</p>	

AWOS-3PT 119.525	MONROE APP CON * 126.9 307.9	CLNC DEL 118.8	UNICOM 122.7 (CTAF) 0
----------------------------	--	--------------------------	---------------------------------



CATEGORY	A	B	C	D
LPV DA		602-7/8	285 (300-7/8)	
LNAV/VNAV DA		628-7/8	311 (400-7/8)	
LNAV MDA	700-1	383 (400-1)	700-1 1/8	383 (400-1 1/8)
C CIRCLING	760-1 443 (500-1)	780-1 463 (500-1)	900-1 1/2 583 (600-1 1/2)	960-2 643 (700-2)

MIRL Rwy 18-36 **0**
REIL Rwy 18 and 36 **0**

SC-4, 26 JAN 2023 to 23 FEB 2023

SC-4, 26 JAN 2023 to 23 FEB 2023