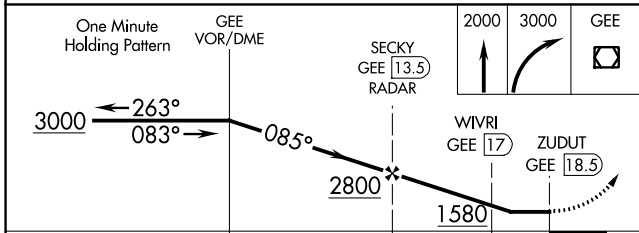
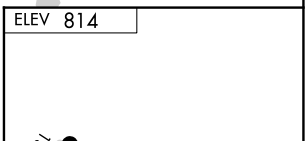
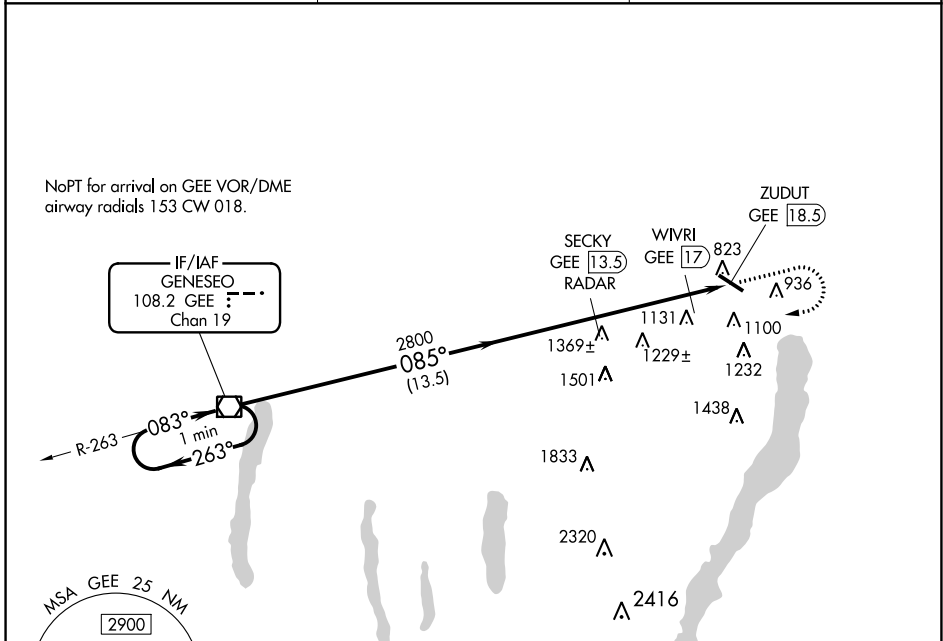


VOR/DME GEE 108.2 Chan 19	APP CRS 085°	Rwy Idg TDZE Apt Elev N/A N/A 814
---	------------------------	---

VOR-A
CANANDAIGUA (IUA)

▽ NA ▲ NA	DME or RADAR required.	MISSED APPROACH: Climb to 2000 then climbing right turn to 3000 direct GEE VOR/DME and hold.
----------------------------	------------------------	--

AWOS-3P 118.675	ROCHESTER APP CON 119.55 269.6	UNICOM 122.8 (CTAF) ①
---------------------------	--	---------------------------------



CATEGORY	A	B	C	D
☐ CIRCLING	1580-1 766 (800-1)	1580-1¼ 766 (800-1¼)	1580-2¼ 766 (800-2¼)	NA
WIVRI FIX MINIMUMS				
☐ CIRCLING	1500-1	686 (700-1)	1540-2 726 (800-2)	NA

MIRL Rwy 13-31 REIL Rwys 13 and 31					
FAF to MAP 5 NM					
Knots	60	90	120	150	180
Min:Sec	5:00	3:20	2:30	2:00	1:40

NE-2, 26 JAN 2023 to 23 FEB 2023

NE-2, 26 JAN 2023 to 23 FEB 2023