

NDB EOP <b>385</b>	APP CRS <b>253°</b>	Rwy Idg <b>4899</b>
		TDZE <b>660</b>
		Apt Elev <b>660</b>

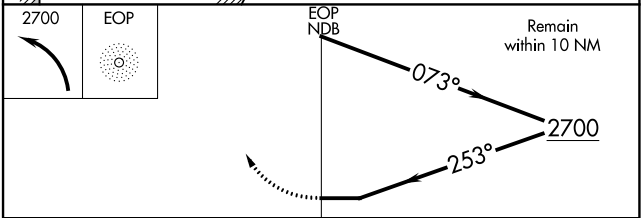
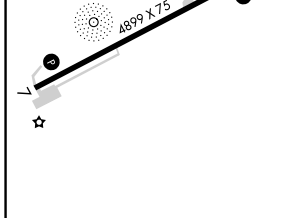
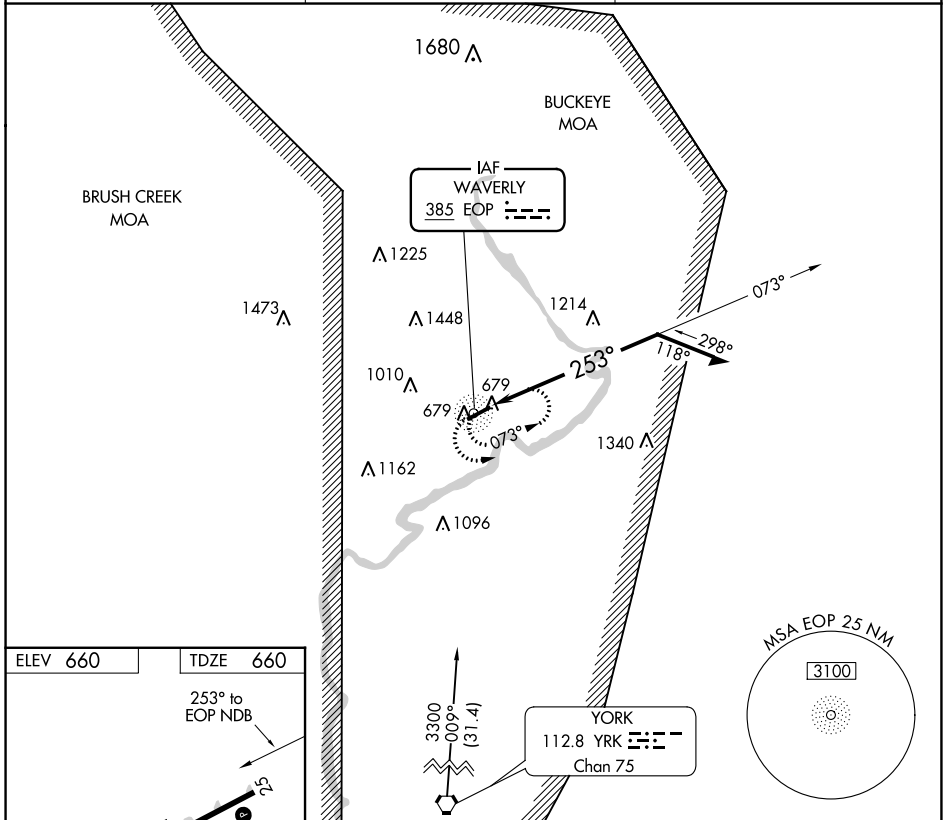
# NDB RWY 25

PIKE COUNTY (EOP)

Use Greater Portsmouth Rgnl altimeter setting; if not received, use Ross County altimeter setting.  
Night landing: Rwy 7 NA.

MISSED APPROACH: Climbing left turn to 2700 in EOP NDB holding pattern.

PMH AWOS-3 <b>125.175</b>	INDIANAPOLIS CENTER <b>135.575 290.5</b>	UNICOM <b>123.0 (CTAF)</b>
------------------------------	---	-------------------------------



CATEGORY	A	B	C	D
S-25	1620-1¼ 960 (1000-1¼)	1620-1½ 960 (1000-1½)	1620-3	960 (1000-3)
CIRCLING	1620-1¼ 960 (1000-1¼)	1620-1½ 960 (1000-1½)	1620-3	960 (1000-3)

REIL Rws 7 and 25  
MIRL Rwy 7-25

WAVERLY, OHIO  
Amdt 1B 03APR14

39°10'N-82°56'W

PIKE COUNTY (EOP)  
**NDB RWY 25**

EC-2, 26 JAN 2023 to 23 FEB 2023

EC-2, 26 JAN 2023 to 23 FEB 2023