

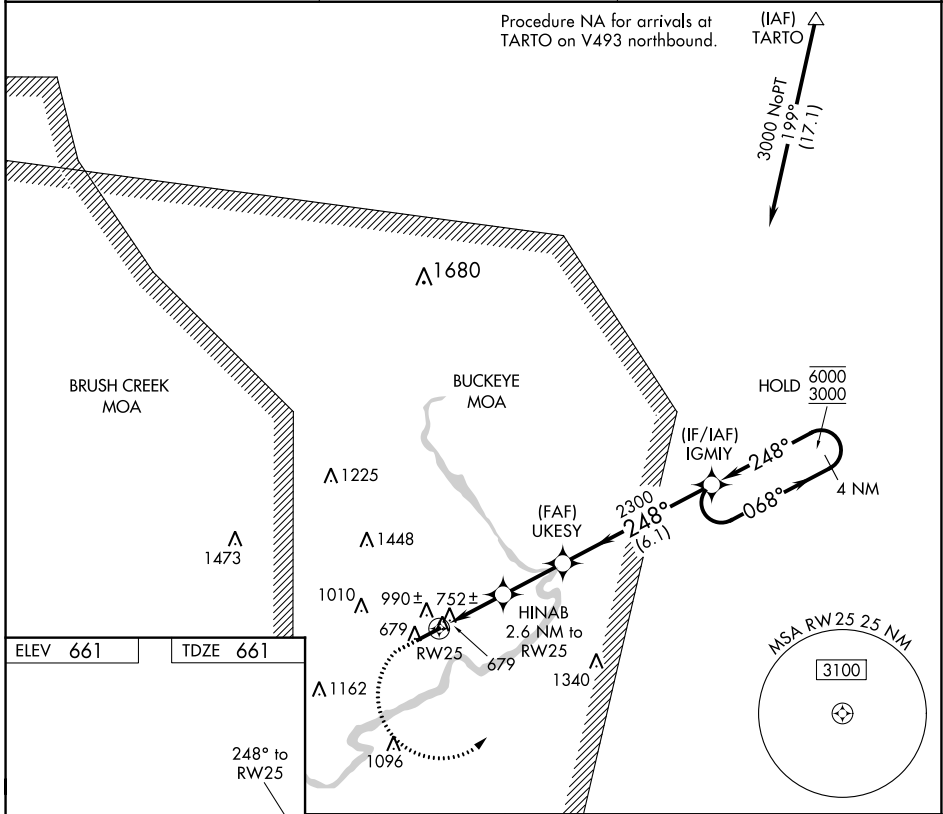
WAAS CH <b>97537</b> <b>W25A</b>	APP CRS <b>248°</b>	Rwy ldg TDZE <b>661</b> Apt Elev <b>661</b>	<b>4899</b> <b>661</b> <b>661</b>
----------------------------------------	------------------------	---------------------------------------------------	-----------------------------------------

# RNAV (GPS) RWY 25

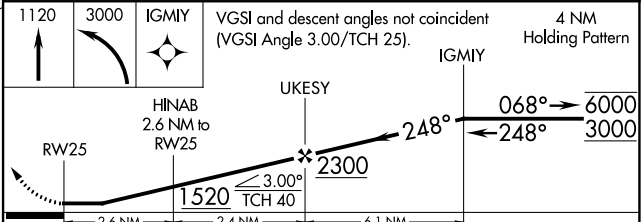
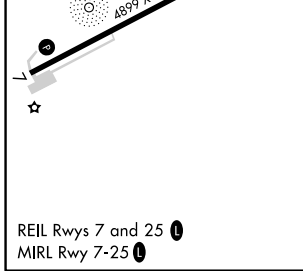
PIKE COUNTY (EOP)

RNP APCH - GPS.	MISSED APPROACH: Climb to 1120 then climbing left turn to 3000 direct IGMY and hold.
<p><b>NA</b> Rwy 25 helicopter visibility reduction below 3/4 SM NA. Circling Rwy 7 NA at night. Use Greater Portsmouth Rgnl altimeter setting; when not received, use Ross County altimeter setting.</p>	

PMH AWOS-3 <b>125.175</b>	INDIANAPOLIS CENTER <b>135.575 290.5</b>	UNICOM <b>123.0 (CTAF)</b>
------------------------------	---------------------------------------------	-------------------------------



ELEV <b>661</b>	TDZE <b>661</b>
-----------------	-----------------



CATEGORY	A	B	C	D
LP MDA	1060-1	399 (400-1)	1060-1 1/8	399 (400-1 1/8)
LNAV MDA	1260-1	599 (600-1)	1260-1 3/4	599 (600-1 3/4)
<b>CIRCLING</b>	1500-1 1/4 839 (900-1 1/4)	1520-1 1/4 859 (900-1 1/4)	1580-2 3/4 919 (1000-2 3/4)	1700-3 1039 (1100-3)

EC-2, 26 JAN 2023 to 23 FEB 2023

EC-2, 26 JAN 2023 to 23 FEB 2023