

WAAS CH <b>56437</b> <b>W07A</b>	APP CRS <b>068°</b>	Rwy Idg <b>4899</b> TDZE <b>661</b> Apt Elev <b>661</b>
--	------------------------	---

# RNAV (GPS) RWY 7

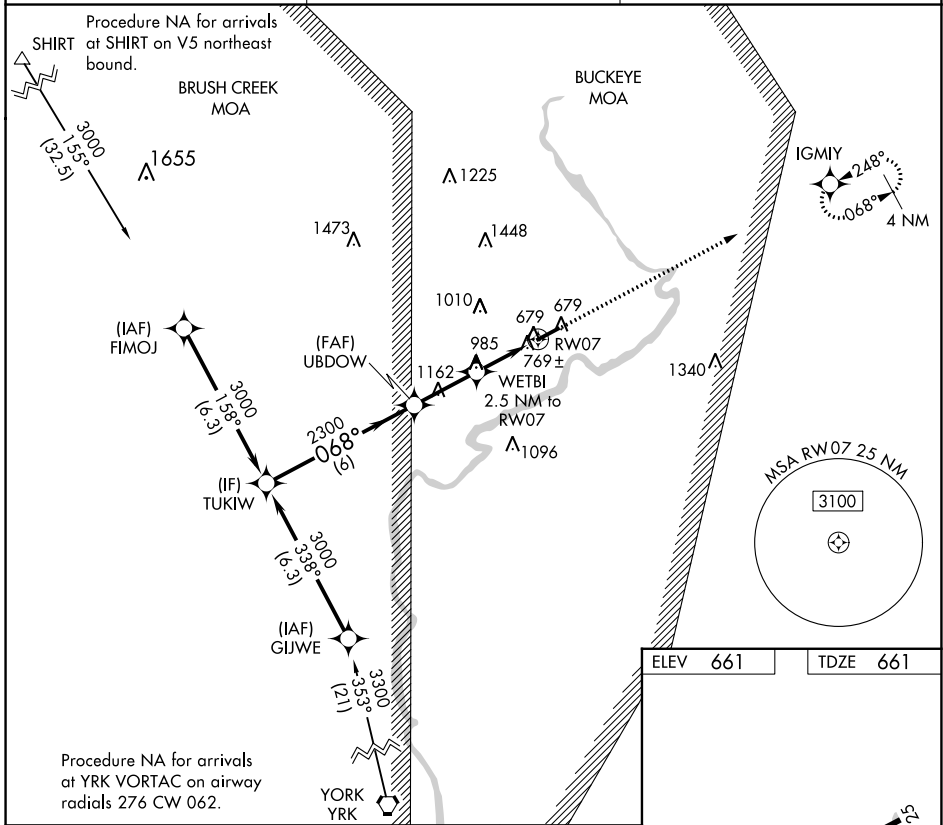
PIKE COUNTY (EOP)

RNP APCH - GPS.

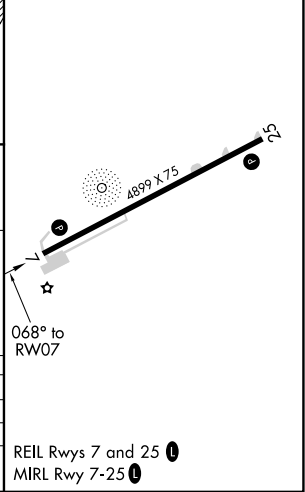
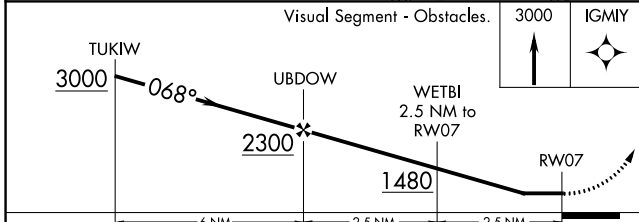
**NA** Rwy 7 helicopter visibility reduction below 1 SM NA. Use Greater Portsmouth Rgnl altimeter setting; when not received, use Ross County altimeter setting. Straight-in Rwy 7 NA at night, Circling Rwy 7 NA at night.

**MISSED APPROACH:**  
Climb to 3000 direct IGMYY and hold.

PMH AWOS-3 <b>125.175</b>	INDIANAPOLIS CENTER <b>135.575 290.5</b>	UNICOM <b>123.0 (CTAF)</b>
------------------------------	---	-------------------------------



ELEV 661	TDZE 661
----------	----------



CATEGORY	A	B	C	D
LP MDA	1080-1	419 (500-1)	1080-1¼	419 (500-1¼)
LNAV MDA	1340-1	679 (700-1)	1340-1½	679 (700-1½)
CIRCLING	1500-1¼ 839 (900-1¼)	1520-1¼ 859 (900-1¼)	1580-2¾ 919 (1000-2¾)	1700-3 1039 (1100-3)

EC-2, 26 JAN 2023 to 23 FEB 2023

EC-2, 26 JAN 2023 to 23 FEB 2023