

APP CRS	Rwy Idg	4156
082°	TDZE	1618
	Apt Elev	1635

RNAV (GPS) RWY 8

LEXINGTON (9S9)

NA When local altimeter setting not received, use Hermiston altimeter setting and increase all MDAs 220 feet, increase LNAV Cat C visibility ½ SM and Circling Cat A/B visibility ¼ SM. Procedure NA at night.
 DME/DME RNP- 0.3 NA. Helicopter visibility reduction below 1 SM NA.

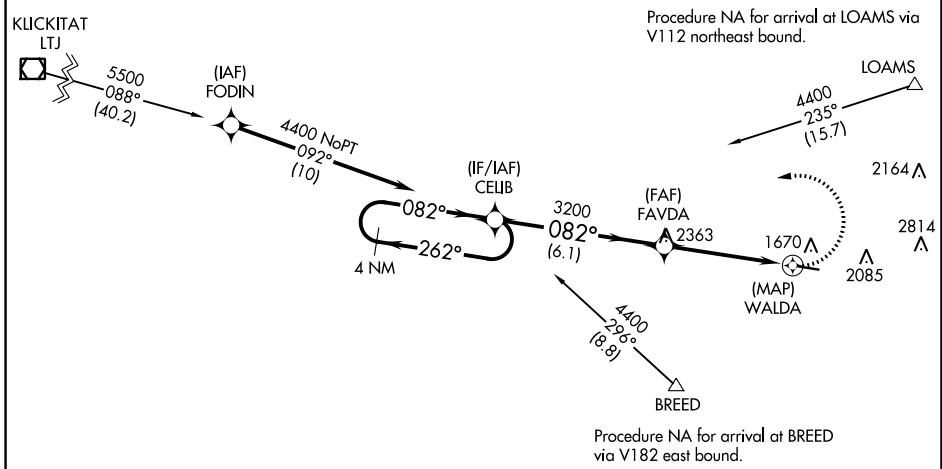
MISSED APPROACH: Climbing left turn to 4400 direct CELIB and hold.

AWOS-3
134.475

SEATTLE CENTER
132.6 269.35

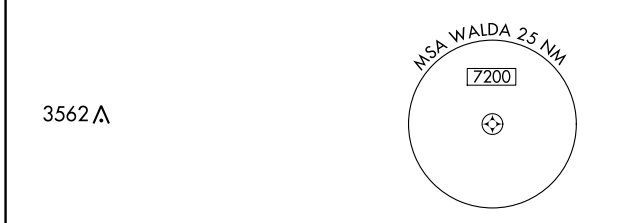
CTAF
122.9

Procedure NA for arrival on LTJ VOR/DME airway radials 032 CW 116.

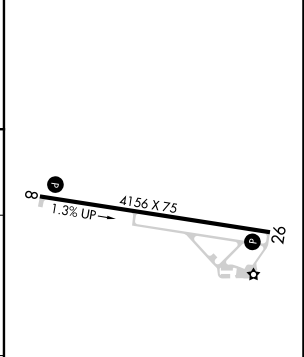
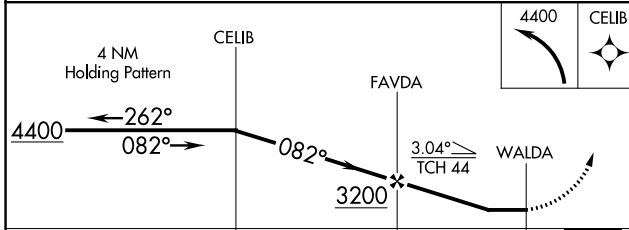


NW-1, 26 JAN 2023 to 23 FEB 2023

NW-1, 26 JAN 2023 to 23 FEB 2023



ELEV 1635	TDZE 1618
-----------	-----------



CATEGORY	A	B	C	D
LNAV MDA	2120-1	502 (500-1)	2120-1½	502 (500-1½)
CIRCLING	2380-1 745 (800-1)	2460-1¼ 825 (900-1¼)	2700-3 1065 (1100-3)	3180-3 1545 (1600-3)

MIRL Rwy 8-26
REIL Rws 8 and 26