

APP CRS	Rwy Idg	<b>5003</b>
<b>011°</b>	TDZE	<b>62</b>
	Apt Elev	<b>62</b>

# RNAV (GPS) RWY 1

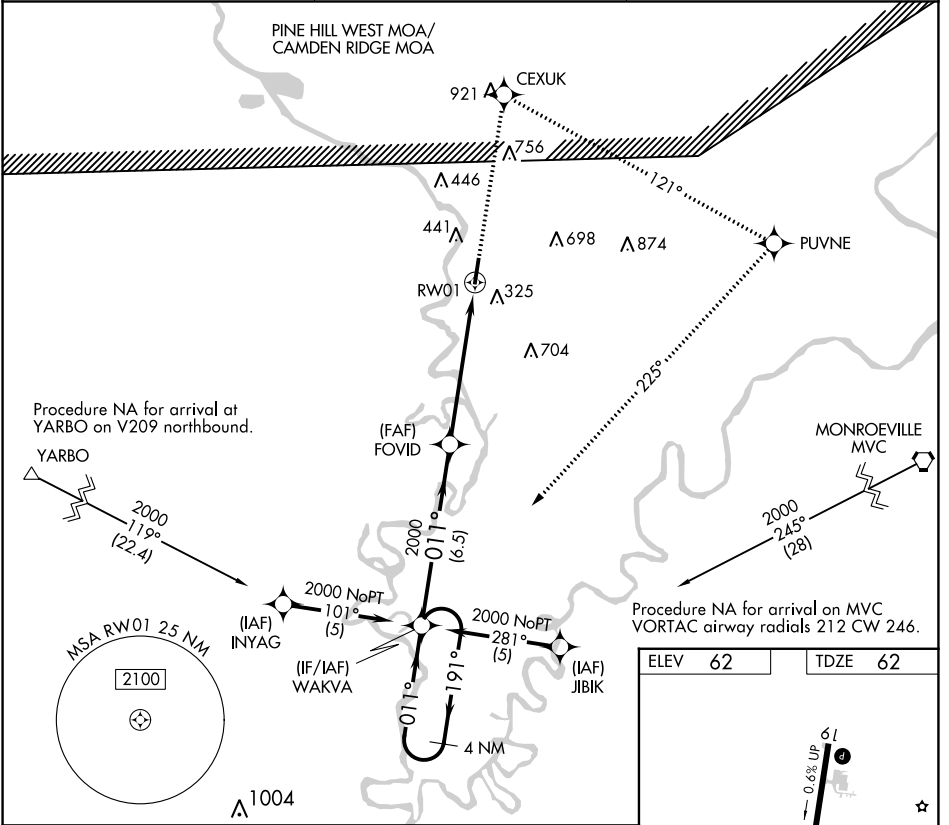
JACKSON MUNI (4R:3)

RNP APCH.

Procedure NA at night. Rwy 1 helicopter visibility reduction below 1 SM NA. Use Evergreen altimeter setting, when not received, use Mobile Rgnl altimeter setting and increase all MDA 20 feet.

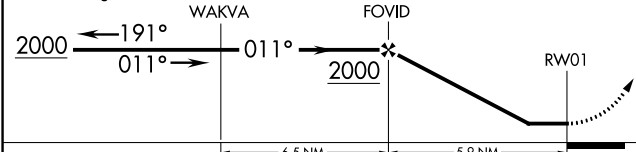
MISSED APPROACH: Climb to 2000 direct CEXUK and right turn on track 121° to PUVNE and right turn on track 225° to WAKVA and hold.

GZH ASOS	HOUSTON CENTER	CTAF
<b>133.425</b>	<b>127.65 285.475</b>	<b>122.90</b>

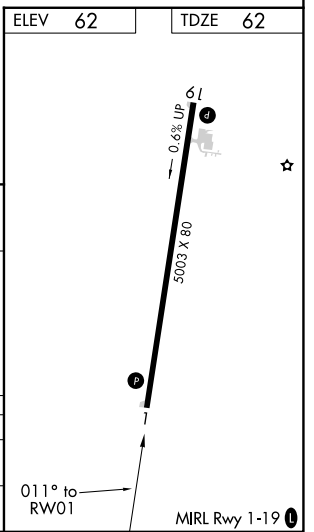


Visual Segment - Obstacles. 2000

4 NM Holding Pattern	CEXUK	PUVNE	WAKVA
	↑	tr 121°	tr 225°



CATEGORY	A	B	C	D
LNVA MDA	900-1 838 (900-1)	900-1¼ 838 (900-1¼)	900-2½ 838 (900-2½)	900-2¾ 838 (900-2¾)
CIRCLING	980-1 ¼	918 (1000-1¼)	980-2¾ 918 (1000-2¾)	1140-3 1078 (1100-3)



SE-4, 26 JAN 2023 to 23 FEB 2023

SE-4, 26 JAN 2023 to 23 FEB 2023