

WAAS CH <b>82629</b> <b>W14A</b>	APP CRS <b>141°</b>	Rwy Idg TDZE Apt Elev	<b>4001</b> <b>33</b> <b>34</b>
--	------------------------	-----------------------------	---------------------------------------

# RNAV (GPS) RWY 14

OKEECHOBEE COUNTY (OBE)

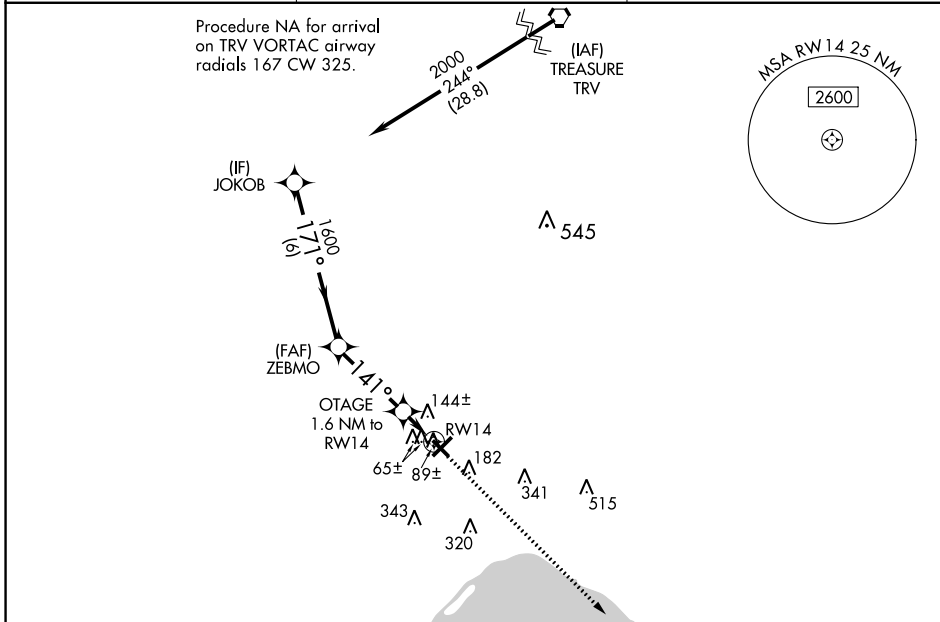
**⚠** DME/DME RNP-0.3 NA. Helicopter visibility reduction below 1 SM NA. When local altimeter setting not received, use Vero Beach altimeter setting: increase all MDAs 80 feet, increase LP visibility Cats C and D 1/4 SM, increase LNAV visibility Cats C and D 3/8 SM and increase Circling visibility Cats C and D 1/4 SM. Procedure NA at night.

**MISSED APPROACH:** Climb to 2000 direct LIYZU and hold.

AWOS-3  
**118.675**

MIAMI CENTER  
**132.25 370.9**

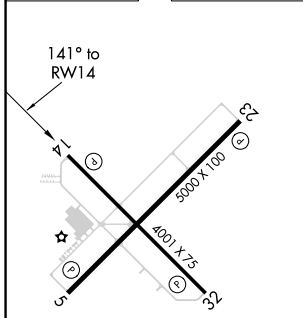
UNICOM  
**123.0 (CTAF)**



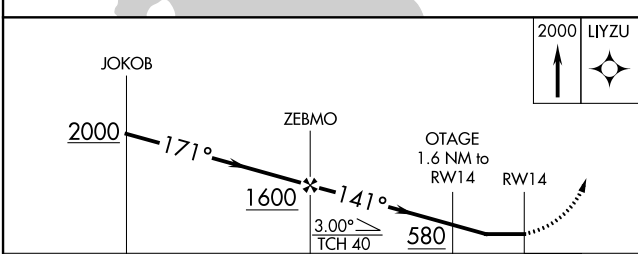
SE-3, 26 JAN 2023 to 23 FEB 2023

SE-3, 26 JAN 2023 to 23 FEB 2023

ELEV 34	TDZE 33
---------	---------



MIRL Rwy 5-23   
REIL Rwy 5 and 23



CATEGORY	A	B	C	D
LP MDA		340-1	307 (400-1)	
LNAV MDA		400-1	367 (400-1)	
CIRCLING	500-1	466 (500-1)	660-1 3/4 626 (700-1 3/4)	660-2 626 (700-2)