

WAAS CH <b>93916</b> <b>W32A</b>	APP CRS <b>321°</b>	Rwy Idg <b>4001</b> TDZE <b>33</b> Apt Elev <b>34</b>
--	------------------------	---

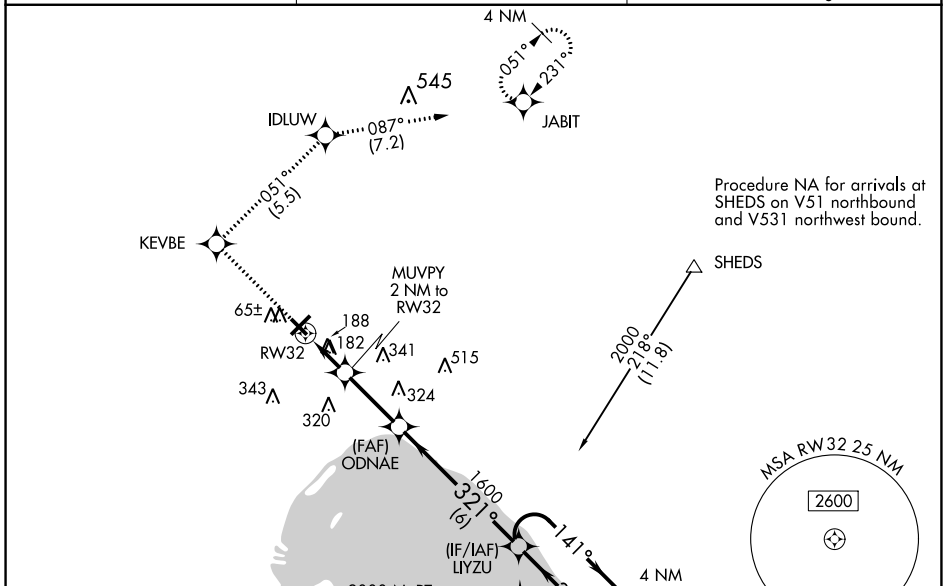
# RNAV (GPS) RWY 32

OKEECHOBEE COUNTY (OBE)

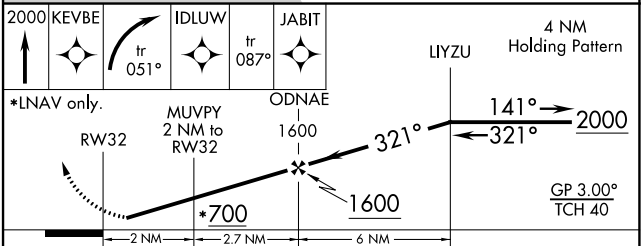
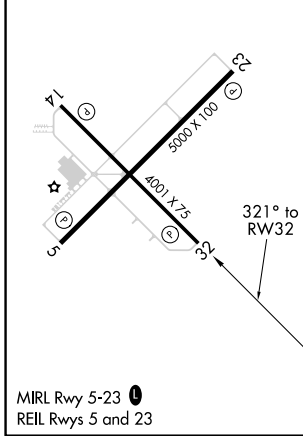
**⚠** Baro-VNAV NA when using Vero Beach altimeter setting. For uncompensated Baro-VNAV systems, LNAV/VNAV NA below -1.5°C (5°F) or above 48°C (118°F). Helicopter visibility reduction below 1 SM NA. DME/DME RNP-0.3 NA. Procedure NA at night. When local altimeter setting not received, use Vero Beach altimeter setting: increase LPV DA to 360 feet and increase visibility all Cats ¼ SM; increase LNAV/VNAV DA to 575 feet and increase visibility all Cats ¼ SM; increase all MDAs 80 feet and LNAV visibility Cat D and Circling visibility Cats C and D ¼ SM.

**MISSED APPROACH:** Climb to 2000 direct KEVBE and right turn on track 051° to IDLUW and on track 087° to JABIT and hold.

AWOS-3 <b>118.675</b>	MIAMI CENTER <b>132.25 370.9</b>	UNICOM <b>123.0</b> (CTAF) <b>📻</b>
--------------------------	-------------------------------------	--



ELEV <b>34</b>	TDZE <b>33</b>
----------------	----------------



CATEGORY	A	B	C	D
LPV DA	283-1 250 (300-1)			
LNAV/VNAV DA	498-1¾ 465 (500-1¾)			
LNAV MDA	440-1 407 (500-1)	440-1¼ 407 (500-1¼)		
CIRCLING	500-1 466 (500-1)	660-1¾ 626 (700-1¾)	660-2 626 (700-2)	

SE-3, 26 JAN 2023 to 23 FEB 2023

SE-3, 26 JAN 2023 to 23 FEB 2023