

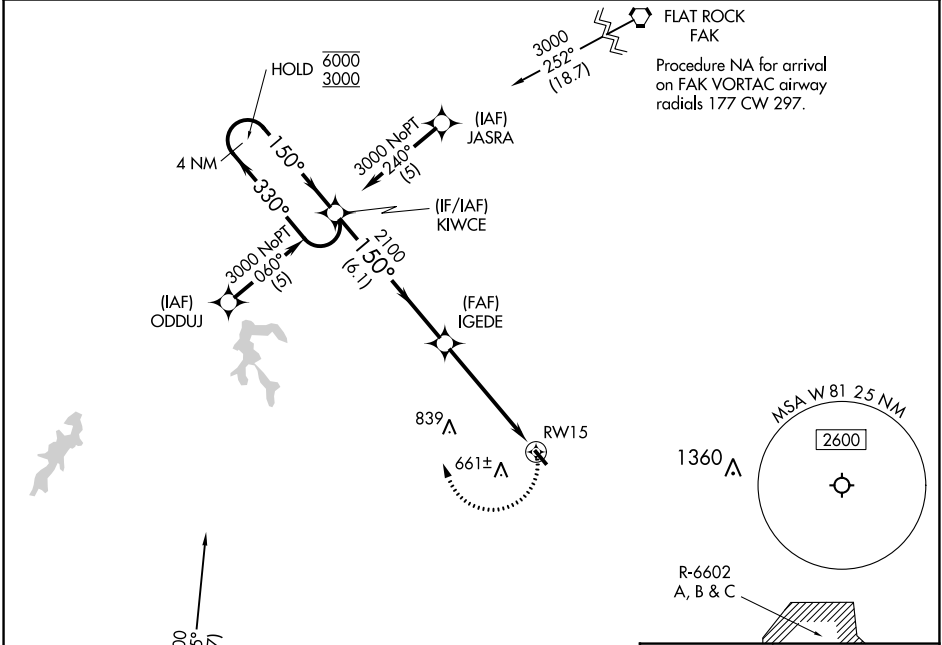
APP CRS	Rwy Idg	N/A
150°	TDZE	N/A
	Apt Elev	422

RNAV (GPS)-A

CREWE MUNI (W81)

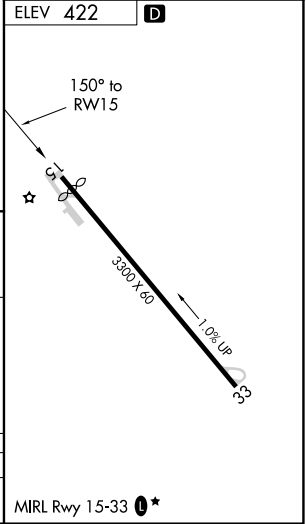
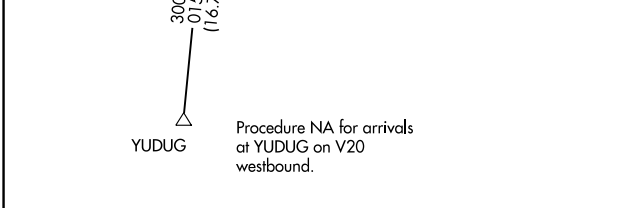
RNP APCH - GPS.	MISSED APPROACH: Climbing right turn to 3000 direct KIWCCE and hold.
<p>▼ Procedure NA at night.</p> <p>▲ Rwy 15 helicopter visibility reduction below 1 SM NA.</p>	

AWOS-3 119.05	WASHINGTON CENTER 118.75 377.1	UNICOM 122.8 (CTAF) ①
-------------------------	--	---------------------------------



NE-3, 26 JAN 2023 to 23 FEB 2023

NE-3, 26 JAN 2023 to 23 FEB 2023



4 NM Holding Pattern	Visual Segment - Obstacles.	3000	KIWCCE
6000 ← 330°			
3000 → 150°			
	IGEDE		
	2100		
		RW15	
	6.1 NM	5.1 NM	

CATEGORY	A	B	C	D
② CIRCLING	1420-3	998 (1000-3)	NA	