

CHICAGO/WEST CHICAGO**DUPAGE** (DPA)(KDPA) 29 W UTC-6(-5DT) N41°54.42' W88°14.88'

759 B ARFF Index—See Remarks NOTAM FILE DPA MON Airport

RWY 02L-20R: H6451X150 (CONC-GRVD) S-30, D-45 HIRL CL**RWY 02L:** MALS. TDZL. RVR-T**RWY 20R:** PAPI(P4L)—GA 3.0° TCH 40'. RVR-R**RWY 02R-20L:** H6451X100 (CONC-GRVD) S-30, D-45 MIRL**RWY 02R:** Rgt tfc.**RWY 10-28:** H4750X75 (ASPH-GRVD) S-30, D-45 HIRL**RWY 10:** RLLS. REIL. VASI(V4L)—GA 3.0° TCH 50'. Bldg.**RWY 28:** REIL. PAPI(P4L)—GA 3.0° TCH 40'.**RWY 15-33:** H3399X100 (ASPH) S-30, D-45, 2D-100 MIRL**RWY 15:** REIL. PAPI(P4R)—GA 3.9° TCH 42'. Tree.**RWY 33:** REIL. Thld dspld 190'. Tree.**SERVICE:** S4 **FUEL** 100LL, JET A **OX1, 2, 3, 4** **LGT** ATC—Ctl. Rwy 10 VASI unusbl byd 5° right and left of centerline.**AIRPORT REMARKS:** Attended continuously. Deer, coyote, birds and migratory waterfowl on and in/ov arpt. 100LL self service avbl 24 hrs with credit card. ARFF Index B PPR. Acft on short final to Rwy 15 are not visible from tower due to trees. Int dep Rwy 20R at Twy G has 6141 ft. U.S. Cust svc avbl PPR. User fee arpt.**AIRPORT MANAGER:** 630-584-2211**WEATHER DATA SOURCES:** ASOS (630) 587-3668 LAWRS.**COMMUNICATIONS:** ATIS 132.075 **UNICOM** 122.95**RCO** 122.3 (KANKAKEE RADIO)Ⓡ **CHICAGO APP/DEP CON** 133.5**TOWER** 120.9 **124.5 GND CON** 121.8 **CLNC DEL** 119.75**AIRSPACE:** CLASS D.**RADIO AIDS TO NAVIGATION:** NOTAM FILE DPA.(L) (L) **VOR/DME** 108.4 DPA Chan 21 N41°53.42' W88°21.01' 076° 4.7 NM to fld. 802/2E.

VOR unusable:

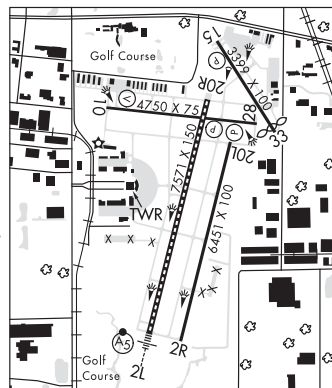
290°-310° byd 35 NM

DME unusable:

290°-340° byd 35 NM

ILS 111.7 I-GVK Rwy 02L. Class IT.

ILS 109.5 I-DPA Rwy 10. Class IB.

COMM/NAV/WEATHER REMARKS: Emerg frequency 121.5 not available at twr.**CHICAGO
COPTER
H-5E, L-28H, A
IAP, AD****COLES CO MEML** (See MATTOON/CHARLESTON on page 70)**COMPTON****BRESSON** (C82) 4 N UTC-6(-5DT) N41°45.75' W89°06.09'

769 TPA-1569(800) NOTAM FILE IKK

RWY 18-36: 2590X184 (TURF) LIRL(NSTD)**RWY 18:** Thld dspld 292'. Berm.**RWY 36:** Thld dspld 320'. Road.**SERVICE:** S4 **LGT** For LIRL Rwy 18-36 call 815-757-8840. Rwy 18-36 NSTD LIRL due to non-frangible mountings; spacing and intensity. Rwy 18-36 edge lgts OTS indefly. Rwy 18 and Rwy 36 dspld thld lgts OTS indefly.**AIRPORT REMARKS:** Attended 1400Z±-dusk. Arpt CLOSED winter months when snow covered except for ski equipped acft. Rwy 18 and Rwy 36 dspld thld marked with tires and lgts.**AIRPORT MANAGER:** (815) 757-8840**COMMUNICATIONS:** CTAF/UNICOM 123.0**CLEARANCE DELIVERY PHONE:** For CD etc Chicago ARTCC at 630-906-8921.**CHICAGO****COTTONWOOD** (See ROCKFORD on page 83)**CRAWFORD CO** (See ROBINSON on page 82)**CUSHING FLD LTD** (See NEWARK on page 75)**DACY** (See HARVARD on page 64)