

**WESTOVER ARB/METRO** (CEF)(KCEF) MIL/CIV AF 3 NE UTC-5(-4DT) N42°11.64' W72°32.09'

**NEW YORK**  
H-101, 11D, 12K, L-33C, 34J  
DIAP, AD

241 B TPA—See Remarks Class IV, ARFF Index A NOTAM FILE CEF

**RWY 05-23:** H11597X300 (ASPH) 2S-175, C5-840 PCN 37 F/A/W/T HIRL

**RWY 05:** ALSF1. PAPI(P4L)—GA 3.0° TCH 72'. RVR-T Thld dsplcd 1202'. Rgt fee.

**RWY 23:** ALSF1. PAPI(P4L)—GA 3.0° TCH 64'. RVR-T

**RWY 15-33:** H7085X150 (ASPH) PCN 21 R/C/W/T HIRL

**RWY 15:** PAPI(P4L)—GA 3.0° TCH 77'.

**RWY 33:** PAPI(P4L)—GA 3.0° TCH 75'. RVR-T Rgt tfc.

**SERVICE:** **FUEL** 100LL, JET A **LGT** When ATCT clsd actvt ALSF1 Rwy 05 & 23; PAPI Rwy 05, 15, 23 & 33; HIRL Rwy 05-23 & Rwy 15-33—CTAF. Arpt bcn opr dusk-0400Z. Airfield lgts not avbl 0400-1200Z. Clear side is split. Dalgt turned on when airfield is IFR. PCL only auth with 5 hr PPR to metro FBO. Rwy 23 PAPI unusbl byd 6 deg R. PAPI all rwy provides proper TCH for hgt GP4 acft only. PAPI off dur opr hr periods of no tfc. Rwy 05 ALSF-1 SFL portion OTS UFN. **TRAN ALERT** Fleet svc for tran acft unavbl wkend and M-F 2030-0400Z without prior apvl fr AMOPS DSN 589-2951. CTC DSN 589-2951 for availability.

**AIRPORT REMARKS:** Attended 1200-0400Z. Fuel opr hrs 1200-0400Z wkdays, 1200-2000Z Sat-Sun exc hol. VMC dep acft remain at or blo 1000' til past dep end of rwy to ensure separation from VFR overhead and clsd pat tfc. Strobe lgt located atop stacks 4000' left Rwy 23 thld; occasional steam cloud. Uncontrolled vehicle tfc on ramps and twy. Rwy 05-23 1000' ovrn both ends of rwy. Heavy VFR tfc blo 10,000' along river and highway 5 NM southwest of afld. Lgt acft tfc, hang glider ops and hot air ballooning activity along river west and northwest of arpt. Westover ARB is a joint-use afld. IFR tkof & landing min as prescribed by USAF reg apply, call FBO mgr at C413-593-5543 for clarification. Civ trng ltd to low apchs only; TGL not auth. TPA rectangular tfc pat: 1000' AGL lgt acft, 2000' AGL large/heavy acft; overhead: 2500' AGL. Rwy 15 wind data est avbl at all times. Rwy 15 no RVR avbl. Ldg fee.

**MILITARY REMARKS:** Opr 1200-0400Z. Arpt clsd 0400-1200Z. Acft on a JA/ATT, JCS, tactical exer, mil chtr mission ctc 439 LRS/LGRDX DSN 589-3318/3125 to coord support rqmnts. Lgrdx will arrng all rqr support. SAAM Missions CDN will be with airfield mgr DSN 589-2944. **RSTD** Westover ARB is a joint-use afld. IFR tkof and ldg minimums are prescribed by USAF regulations apply. Call arpt mgr at C413-593-5543 for clarification. PPR DSN 589-2951, C413-557-2951, fax exten 2156. AMC, AMC-GAINED and AFRC acft opr rstd dur Bird Watch Conditions Moderate (tkf or ldg permissions only when dep/arr rte avoid identified bird activity, no lcl tfc pat activity) and Severe (tkf and ldg prohibited without OG/CC apvl), ctc PTD/ATIS for current Bird Watch Condition Code. Civ trng ltd to low apchs only. Civ pilots are reminded to check mil NOTAMS by visiting the Federal NOTAM System (FNS) Website (<https://NOTAMS.AIM.FAA.GOV/NOTAMSEARCH/>) or contacting flight service. Aft hrs dep/arr 24 hr PPR notice 413-593-5543. **CAUTION** VMC departing acft remain at or blo 1000' until past departure end of rwy to ensure separation from VFR overhead and clsd pat tfc. Strobe lgt ltd atop stacks 4000' left Rwy 23 thld, oncl steam cloud. Uncltd vehicular tfc on ramps and twys. Potential for hydroplaning after any precipitation. Ponding at int Rwy 05-23 and Rwy 15-33 measured in 1/10th inches. See NOTAMS for KCEF. Heavy VFR tfc blo 10,000' along river and highway 5 NM SW afld. Lgt acft tfc, hang glider ops and hot air ballooning activity along river West and NW of arpt. Extv hang glider and glider in the Mt. Greylock area aprx 45 NM NW of fld. Unlighted obst west side Rwy 05 clearance zone. Eastside pad 19, pad 33 and Twy L do not have paved shoulders. **TFC PAT** TPA rectangular lgt acft 1000', large/heavy acft 2000', overhead 2500'. **CSTMS/AG/IMG** Pilot must arrng cust 860-292-1314.

**AIRPORT MANAGER:** 413-593-5543

**COMMUNICATIONS:** CTAF 134.85 ATIS 127.525 (1200-0400Z) **UNICOM** 122.95 **PTD** 372.2

® **YANKEE APP/DEP CON** 125.35 281.5

**TOWER** 134.85 348.75 (1200-0400Z) **GND CON** 118.35 275.8

**COMD POST 439 AW** (CASINO ROYALE) 252.1 (Opr 24 hrs)

**PMSV METRO** 274.75 Full svc 1100-0400Z; DSN 589-2879, other times ctc 15 OWS DSN 576-9755. Ngd obstn ltd due to hi instst scly lgts. Afld wx is mnt by AN/FMQ-19. Automated obs are qlty ctfd for accuracy durg ATC flying hrs.

**CLEARANCE DELIVERY PHONE:** When ATCT clsd, for CD ctc Bradley Apch 860-386-3580.

**AIRSPACE:** CLASS D svc 1200-0400Z; other times CLASS G.

**CONTINUED ON NEXT PAGE**

CONTINUED FROM PRECEDING PAGE

RADIO AIDS TO NAVIGATION: NOTAM FILE CEF.

(L) TACAN Chan 87 CEF (114.0) N42°11.85' W72°31.58' at fld. 240/14W.

No NOTAM MP 1100-1500Z‡ Fri

TACAN AZIMUTH unusable:

001°-089° byd 35 NM blo 7,000'

090°-110° blo 8,000'

111°-180° byd 20 NM blo 7,000'

220°-240° byd 24 NM blo 4,000'

305°-320° byd 15 NM blo 4,000'

DME unusable:

001°-089° byd 20 NM blo 7,000'

090°-110° blo 8,000'

111°-180° byd 20 NM blo 7,000'

220°-240° byd 24 NM blo 4,000'

305°-320° byd 15 NM blo 4,000'

BARNES (L) (L) VORTACW 113.0 BAF Chan 77 N42°09.72' W72°42.97' 091° 8.3 NM to fld.

267/14W. NOTAM FILE BAF.

VORTAC unusable:

310°-340° byd 25 NM blo 6,500'

VOR unusable:

249°-260° byd 10 NM blo 10,000'

ILS 109.9 I-GWJ Rwy 05. Class IE. Unmonitored when ATCT clsd.

ILS 109.9 I-CEF Rwy 23. Class IE. Mnt 1200-0400Z‡. No NOTAM MP: Rwy 05-23 1400-1600Z‡ Mon, Wed,

Fri. Unmonitored when ATCT clsd.

COMM/NAV/WEATHER REMARKS: ATCT ops extns/ireg hrs by NOTAM. ATIS No NOTAM MP Thu 1400-1600Z‡.

WORCESTER RGNL (ORH)(KORH) 3 W UTC-5(-4DT) N42°16.03' W71°52.54'

NEW YORK

1009 B LRA Class I, ARFF Index B NOTAM FILE ORH

H-101, 11D, 12K, L-33C, 34J

RWY 11-29: H7001X150 (ASPH-GRVD) S-120, D-250, 2S-138,

IAP, AD

2D-550 PCN 89 F/C/W/T HIRL CL

RWY 11: ALSF2. TDZL. PAPI(P4R)—GA 3.0° TCH 55'. RVR-TR Hill.

RWY 29: REIL. PAPI(P4L)—GA 3.0° TCH 54'. RVR-TR

RWY 15-33: H5000X100 (ASPH-GRVD) S-85, D-120, 2S-138,

2D-210 PCN 35 F/C/W/T MIRL

RWY 15: REIL. VASI(V4L)—GA 3.6° TCH 42'. Antenna.

RWY 33: REIL. PAPI(P4L)—GA 3.0° TCH 40'.

RUNWAY DECLARED DISTANCE INFORMATION

RWY 11: TORA-7001 TODA-7001 ASDA-7001 LDA-7001

RWY 15: TORA-5000 TODA-5000 ASDA-5000 LDA-5000

RWY 29: TORA-7001 TODA-7001 ASDA-7001 LDA-7001

ARRESTING GEAR/SYSTEM

RWY 11: EMAS

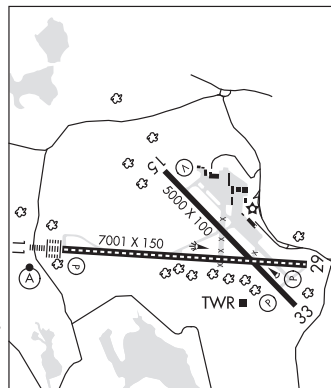
RWY 29: EMAS

SERVICE: S4 FUEL 100LL, JET A LGT Actvt REIL Rwy 15, 29 and 33; HIRL Rwy 11-29; MIRL Rwy 15-33—CTAF. Rwy 11 ALSF-2 becomes SSALS preset on med instst only when twr clsd. Rwy 15 VASI unubl byd 9° left of crs.

AIRPORT REMARKS: Attended continuously. Wildlife and birds on and invof

arpt. Use ctm for arpt vehicles mnt CTAF and operg on arpt durg non twr hrs. Rwy guard lgts installed on all twy to rwy intersections, Rwy 11-29 only. EMAS 170' wide, 154' length located at DER 11. EMAS 170' wide, 300' length located at DER 29. Ldg fee for multi-eng acct and lrg. Flight Notification Service (ADCUS) available. 2 hours advance notice for customs.

AIRPORT MANAGER: 508-849-5550



CONTINUED ON NEXT PAGE