

**CAVERNS** N38°41.96' W78°28.34' NOTAM FILE DCA.

WASHINGTON

NDB (MHW) 245 LUA 223° 2.4 NM to Luray Caverns. 834/9W. NDB unmonitored when arpt unatndd.

L-29G

NDB unusable:

050°-208° byd 10 NM

209°-049° byd 15 NM

**CHAMBERS FLD** (See NORFOLK NS (CHAMBERS FLD) on page 366)**CHARLOTTESVILLE-ALBEMARLE** (CHO)(KCHO) 7 N UTC-5(-4DT) N38°08.38'

WASHINGTON

W78°27.14'

H-10H, 12I, L-26I, 36H

640 B Class I, ARFF Index B NOTAM FILE CHO MON Airport

IAP, AD

**RWY 03-21:** H6801X150 (ASPH-GRVD) S-120, D-228, 2S-175,

2D-368 PCN 65 F/C/X/T HIRL 0.3% up SW

**RWY 03:** MALSR. PAPI(P4L)—GA 3.0° TCH 53'.**RWY 21:** REIL. PAPI(P4R)—GA 3.0° TCH 50'.**RUNWAY DECLARED DISTANCE INFORMATION****RWY 03:** TORA-6801 TODA-6801 ASDA-6801 LDA-6801**RWY 21:** TORA-6801 TODA-6801 ASDA-6801 LDA-6801**SERVICE:** S4 FUEL 100LL, JET A LGT When ATCT clsd HIRL Rwy 03-21, and twy lights preset low instst. To actvd and increase instst MALSR Rwy 03; REIL Rwy 21; HIRL Rwy 03-21 and twy lights—CTAF. Rwy 21 VGSU unubl byd 6.5 deg L of RCL.**AIRPORT REMARKS:** Attended 0930-0530Z†. Deer and birds on and in/ovf arpt. PPR 8 hrs for unscheduled air carrier ops with more than 9 passenger seats between 0400-1100Z†, call arpt manager 434-981-4152. Wheeled helicopters are requested to ground taxi when transiting arpt. Twy J uncontrolled, not visible from twr. Ldg fee only for acft over 7000 lbs.**AIRPORT MANAGER:** 434-973-8342**WEATHER DATA SOURCES:** ASOS (434) 973-5024**COMMUNICATIONS:** CTAF 124.5 ATIS 118.425 UNICOM 122.95

® POTOMAC APP/DEP CON 132.85

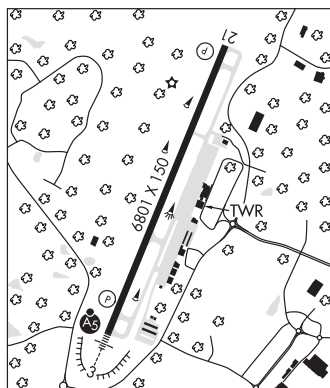
APP/DEP CON 120.525

TOWER 124.5 (1100-0400Z†) GND CON 121.9

**CLEARANCE DELIVERY PHONE:** For CD when ATCT is clsd ctc Potomac Apch at 866-640-4124.**AIRSPACE:** CLASS D svc 1100-0400Z†; other times CLASS E.**RADIO AIDS TO NAVIGATION:** NOTAM FILE DCA.**GORDONSVILLE (H) (H) VORTAC** 115.6 GVE Chan 103 N38°00.82' W78°09.18' 304° 16.1 NM to fld. 383/6W.

TACAN AZIMUTH unusable:

250°-260° byd 25 NM blo 7,000'

**ILS/DME** 111.7 I-CHO Chan 54 Rwy 03. Class IA. ILS unmonitored when ATCT closed.**CHASE CITY MUNI** (CXE)(KCXE) 2 W UTC-5(-4DT) N36°47.30' W78°30.09'

WASHINGTON

503 TPA-1303(800) NOTAM FILE DCA

L-36G

**RWY 18-36:** H3400X50 (ASPH) S-12.5 0.5% up N

IAP

**RWY 18:** Road.**RWY 36:** Brush.**AIRPORT REMARKS:** Unattended. Arpt clsd SS-SR indef. Deer on and in/ovf arpt. Farm equipment operating near rwy. Rwy 18-36 severe cracking. 1-2 inches in places and along centerline. Rwy 18-36 longitudinal and transverse cracking, some raveling in certain areas.**AIRPORT MANAGER:** 434-372-5136**WEATHER DATA SOURCES:** AWOS-3 121.225 (434) 372-4506.**COMMUNICATIONS:** CTAF 122.9

® WASHINGTON CENTER APP/DEP CON 118.75

**CLEARANCE DELIVERY PHONE:** For CD ctc Washington ARTCC at 703-771-3587.**RADIO AIDS TO NAVIGATION:** NOTAM FILE DCA.**SOUTH BOSTON (L) (L) VORTAC** 110.4 SBV Chan 41 N36°40.50'

W79°00.87' 080° 25.7 NM to fld. 520/5W.

