

DANVILLE RGNL (DAN)(KDAN) 3 E UTC-5(-4DT) N36°34.35' W79°20.18'

CINCINNATI

571 B TPA—See Remarks NOTAM FILE DAN

H-9C, 12I, L-26I, 36G

RWY 02-20: H5900X100 (ASPH-GRVD) S-90, D-130, 2S-165

IAP

HIRL 0.5% up N

RWY 02: MALS.R. PAPI(P4L)—GA 3.0° TCH 55'.

RWY 20: REIL. PAPI(P4L)—GA 3.0° TCH 47'. Thld displcd 300'. Trees.

RWY 13-31: H3910X100 (ASPH) S-90, D-130, 2S-165 MIRL
1.1% up NW

RWY 13: REIL. VASI(V2L)—GA 3.0° TCH 28'. Trees.

RWY 31: REIL. PAPI(P2L)—GA 4.0° TCH 76'. Trees.

RUNWAY DECLARED DISTANCE INFORMATION

RWY 02: TORA-5600 TODA-5900 ASDA-5600 LDA-5600

RWY 20: TORA-5900 TODA-5900 ASDA-5900 LDA-5600

SERVICE: S4 FUEL 100LL, JET A+ LGT ACTIVATE HIRL Rwy 02-20, MIRL Rwy 13-31, REIL Rwy 13, Rwy 31, and Rwy 20, MALS.R Rwy 02, VASI Rwy 13 and PAPI Rwy 02, Rwy 20 and Rwy 31—CTAF.

AIRPORT REMARKS: Attended 1200-0000Z±. Arpt unattended Christmas Day. Pavement at/before Rwy 31 thld in poor condition. Center 75 feet of rwy in fair condition. Outer 12 feet each side poor. Birds and deer on and invof arpt. Trees penetrating 7:1 transitional sfc of Rwy 31 both sides, first 1000'. Ctc arpt administration prior to conducting specialized aero activities 434-799-5110. TPA-1371 (800) lgt acct, 2071 (1500) turbine acct. Rwy 02 is designated calm wind rwy.

AIRPORT MANAGER: 434-799-5110

WEATHER DATA SOURCES: ASOS 128.125 (434) 799-1701.

COMMUNICATIONS: CTAF/UNICOM 123.05

RCO 122.2 (LEESBURG RADIO)

® WASHINGTON CENTER APP/DEP CON 124.05

CLEARANCE DELIVERY PHONE: For CD if una to ctc on FSS freq, ctc Washington ARTCC at 703-771-3587.

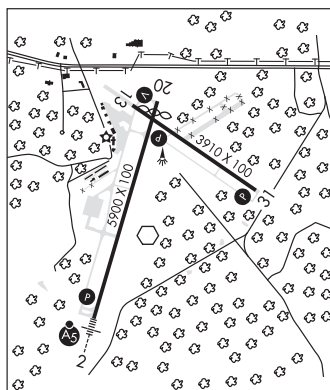
AIRSPACE: CLASS E svc continuous.

RADIO AIDS TO NAVIGATION: NOTAM FILE DCA.

SOUTH BOSTON (L) (L) VORTAC 110.4 SBV Chan 41 N36°40.50' W79°00.87' 254° 16.7 NM to fld. 520/5W.

(L) **VORW** 113.1 DAN N36°34.13' W79°20.20' at fld. 568/6W. NOTAM FILE DAN.

ILS 110.7 I-DAN Rwy 02. Class IE.



DAVEE N38°39.70' W77°06.61' NOTAM FILE DCA.

WASHINGTON

NDB (HW) 223 DAA 323° 4.6 NM to Davison AAF. 53/9W.

L-29E, 34E, 36I

Unusable:

Byd 15 NM