

WACO RGNL (ACT)(KACT) 5 NW UTC-6(-5DT) N31°36.73' W97°13.82'

516 B ARFF Index—See Remarks NOTAM FILE ACT

RWY 01-19: H7107X150 (ASPH-GRVD) S-50, D-82, 2S-121, 2T-276,
2D-166, C5-466 HIRL

RWY 01: PAPI(P4R)—GA 3.0° TCH 55'. RVR-R Thld dsplcd 102'.
Road.

RWY 19: MALSR. RVR-T

RWY 14-32: H5103X150 (ASPH-GRVD) S-50, D-82, 2S-104 MIRL

RWY 14: REIL. PAPI(P4L)—GA 3.0° TCH 58'.

RWY 32: PAPI(P4L)—GA 3.0° TCH 58'. Road.

RUNWAY DECLARED DISTANCE INFORMATION

RWY 01: TORA-7107 TODA-7107 ASDA-7107 LDA-7005

RWY 14: TORA-5103 TODA-5103 ASDA-5103 LDA-5103

RWY 19: TORA-7107 TODA-7107 ASDA-6605 LDA-6605

RWY 32: TORA-5103 TODA-5103 ASDA-5103 LDA-5103

SERVICE: S4 FUEL 100LL, JET A, UL94 OX 1 LGT When ATCT clsd:
MALSR Rwy 19; HIRL Rwy 01-19 preset low intst, to incr intst
actvt—CTAF. REIL Rwy 14; MIRL Rwy 14-32; twy lgts preset low intst
when wind favors, otrw not avbl.

AIRPORT REMARKS: Attended 1030-0600Z†. Class I, ARFF Index B. PPR for
unscheduled air carrier ops call arpt manager 254-750-8657. NOTE:
See Special Notices—Model Aircraft Activity.

AIRPORT MANAGER: 254-750-8657

WEATHER DATA SOURCES: ASOS (254) 759-3065

COMMUNICATIONS: CTAF 119.3 ATIS 123.85 UNICOM 122.95

RCO 122.6 (FORT WORTH RADIO)

Ⓡ APP CON 127.65 (0600-1200Z†)

Ⓡ DEP CON 126.125 (0600-1200Z†)

Ⓡ FORT WORTH CENTER APP/DEP CON 133.3 (0600-1200Z†)

TOWER 119.3 (1200-0600Z†) GND CON 121.9

CLEARANCE DELIVERY PHONE: For CD ctc waco Apch at 121.9 or ctc Fort Worth ARTCC at 817-858-7584.

AIRSPACE: CLASS D svc 1200-0600Z†; other times CLASS E.

RADIO AIDS TO NAVIGATION: NOTAM FILE ACT.

(VH) (H) VORTACW 115.3 ACT Chan 100 N31°39.73' W97°16.14' 137° 3.6 NM to fld. 507/9E.

VOR unusable:

125°-149° byd 40 NM

149°-159° byd 47 NM

159°-187° byd 40 NM

188°-198° byd 40 NM blo 12,000'

199°-234° byd 40 NM

235°-245° byd 50 NM

246°-256° byd 40 NM blo 18,000'

246°-256° byd 52 NM

257°-267° byd 58 NM

268°-282° byd 40 NM

270°-335° byd 35 NM blo 4,000'

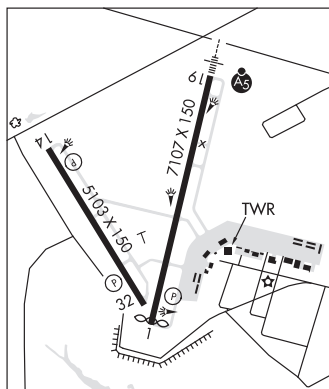
283°-293° byd 40 NM blo 6,000'

283°-293° byd 58 NM

294°-330° byd 40 NM

ILS/DME 109.7 I-ACT Chan 34 Rwy 19. Class IE. ILS/DME unmonitored when ATCT closed.

ASR (1200-0600Z†)



SAN ANTONIO
H-6H, L-19D, A
IAP, AD

WINGS FOR CHRIST INTL FLIGHT ACADEMY (73F) 8 NE UTC-6(-5DT) N31°37.43' W97°01.35' **SAN ANTONIO**

455 NOTAM FILE FTW

RWY 16-34: 3000X80 (TURF) RWY LGTS(NSTD)

RWY 16: Thld dsplcd 315'. Fence.

RWY 34: Trees. Rgt tfc.

SERVICE: S2 LGT ACTIVATE LIRL Rwy 16-34—CTAF.

AIRPORT REMARKS: Attended continuously. +4' fence along both sides of rwy 70' from centerline south half of rwy. Rwy 34
40' trees 90' fm thr.

AIRPORT MANAGER: 254-723-3277

COMMUNICATIONS: CTAF 122.9

CLEARANCE DELIVERY PHONE: For CD ctc Fort Worth ARTCC at 817-858-7584.

COMM/NAV/WEATHER REMARKS: Arpt inside Class D airspace. Ctc TSTC twr 124.0.