

## LAKEVIEW

**GASTONS** (3MØ) 1 S UTC-6(-5DT) N36°20.94' W92°33.35'

479 TPA-1300(821) NOTAM FILE JBR

**RWY 06-24:** 3200X55 (TURF)**RWY 06:** Road.**RWY 24:** Tree.**SERVICE:** FUEL 100LL**AIRPORT REMARKS:** Attended 1230-0300Z†. Fuel avbl dalgt only. Rwy 24 has 20' drop 50' from end of rwy. All acft land Rwy 24, takeoff Rwy 06.**AIRPORT MANAGER:** 870-431-5202**COMMUNICATIONS:** CTAF/UNICOM 122.8**CLEARANCE DELIVERY PHONE:** For CD ctc Memphis ARTCC at 901-368-8453/8449.

KANSAS CITY

**LASKY** N34°40.14' W92°18.32' NOTAM FILE LIT.**NDB (LOMW)** 353 LI 048° 5.4 NM to Bill And Hillary Clinton Ntl/Adams Fld. 248/OE.

MEMPHIS

L-18F

**LAWRENCE CO** N36°12.42' W90°55.39' NOTAM FILE ARG.**NDB (MHW)** 227 TNZ 180° 4.9 NM to Walnut Ridge Rgnl. 262/1E. NDB unmonitored 2300-1300Z†.

ST LOUIS

L-16G

## LITTLE ROCK

**BILL AND HILLARY CLINTON NTL/ADAMS FLD** (LIT)(KLIT) 2 E UTC-6(-5DT) N34°43.77' W92°13.49'

266 B LRA Class I, ARFF Index C NOTAM FILE LIT

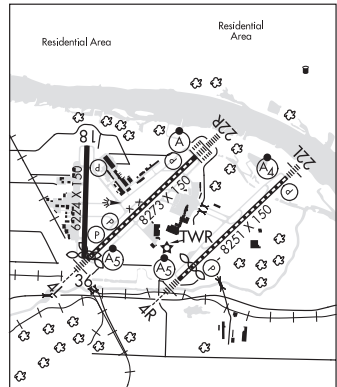
**RWY 04L-22R:** H8273X150 (CONC-GRVD) S-75, D-200, 2S-175, 2D-350 HIRL CL**RWY 04L:** MALSR. TDZL. PAPI(P4L)—GA 3.0° TCH 50'. RVR-TMR Thld dspcd 297'. Railroad.**RWY 22R:** ALSF2. TDZL. PAPI(P4R)—GA 3.0° TCH 58'. RVR-TMR Rgt ttc.**RWY 04R-22L:** H8251X150 (CONC-GRVD) S-75, D-200, 2S-175, 2D-350 HIRL CL**RWY 04R:** MALSR. TDZL. PAPI(P4R)—GA 3.0° TCH 50'. RVR-TR Thld dspcd 1050'. Pole. Rgt ttc.**RWY 22L:** MALSF. TDZL. PAPI(P4L)—GA 3.0° TCH 50'. RVR-TR Trees.**RWY 18-36:** H6224X150 (CONC-GRVD) S-75, D-100, 2S-127, 2D-135 MIRL**RWY 18:** PAPI(P4L)—GA 3.0° TCH 50'. Tree.**RWY 36:** PAPI(P4R)—GA 3.75° TCH 63'. Thld dspcd 164'. Trees.**RUNWAY DECLARED DISTANCE INFORMATION****RWY 04L:**TORA-8273 TODA-8273 ASDA-8273 LDA-7976**RWY 04R:**TORA-8250 TODA-8250 ASDA-8250 LDA-7200**RWY 18:** TORA-6060 TODA-6060 ASDA-6060 LDA-6060**RWY 22L:**TORA-7200 TODA-7200 ASDA-7200 LDA-7200**RWY 22R:**TORA-8273 TODA-8273 ASDA-8273 LDA-8273**RWY 36:** TORA-6224 TODA-6224 ASDA-6224 LDA-6060**ARRESTING GEAR/SYSTEM****RWY 22R:** EMAS**SERVICE:** S4 FUEL 100LL, JET A OX1, 3**AIRPORT REMARKS:** Attended continuously. Large concentrations of birds invov arpt most activity between SR-SS up to 1500' MSL. Be alert North Little Rock Muni arpt is lctd 6 miles north-northwest with similar rwy configurations. Twy A 315' south of Twy L intersection to Rwy 36 clsd except acft with wingspan less than 79'. No general aviation parking on terminal or cargo ramp. Cargo and terminal ramps are non-movement areas. Landing fee.**AIRPORT MANAGER:** 501-372-3439**WEATHER DATA SOURCES:** ASOS (501) 376-0247 LLWAS.**COMMUNICATIONS:** D-ATIS 125.65 (501) 379-2915 UNICOM 122.95

LITTLE ROCK RCO 122.55 (JONESBORO RADIO)

® LITTLE ROCK APP/DEP CON 135.4 (040°-239°) 119.5 (240°-039°)

**TOWER** 118.7 **GND CON** 121.9 **CLNC DEL** 118.95 **PRE TAXI CLNC** 118.95

PDC

**CLEARANCE DELIVERY PHONE:** For CD when una via freq ctc Little Rock Apmh 501-379-2908 or Little Rock ATCT 501-379-2911.

MEMPHIS

H-6I, L-18F

IAP, AD

CONTINUED ON NEXT PAGE

## CONTINUED FROM PRECEDING PAGE

AIRSPACE: CLASS C svc ctc APP CON.

RADIO AIDS TO NAVIGATION: NOTAM FILE LIT.

LITTLE ROCK (H) (H) VORTACW 113.9 LIT Chan 86 N34°40.66' W92°10.83' 320° 3.8 NM to fld. 240/5E.

TACAN AZIMUTH &amp; DME unusable:

221°-228° byd 20 NM blo 2,800'

229°-239° byd 20 NM blo 2,500'

260°-280° byd 35 NM blo 5,000'

TACAN AZIMUTH unusable:

320°-335° byd 5 NM

LASKY NDB (LOMW) 353 LI N34°40.14' W92°18.32' 048° 5.4 NM to fld. 248/0E.

ILS/DME 110.3 I-LIT Chan 40 Rwy 04L. Class IA. LOM LASKY NDB. DME also serves Rwy 22R. DME unusable byd 30° left and byd 15° right of course.

ILS/DME 111.3 I-CNL Chan 50 Rwy 04R. Class IA.

ILS/DME 110.7 I-BWY Chan 44 Rwy 22L. Class IB. LOC offset 1.87 degs.

ILS/DME 110.3 I-AAV Chan 40 Rwy 22R. Class IIIE. DME also serves Rwy 04L.

LITTLE ROCK AFB (LRF)(KLRF) AF (ANG) 1 SE UTC-6(-5DT) N34°55.05' W92°08.70'

312 B TPA—See Remarks NOTAM FILE LRF Not insp.

RWY 07-25: H12000X200 (CONC) PCN 38 R/D/W/T HIRL

RWY 07: ALSF (NSTD) PAPI(P4L)—GA 2.5° TCH 49'. RVR-T

RWY 25: ALSF2. PAPI(P4L)—GA 2.5° TCH 44'. RVR-T Rgt ttc.

RWY 071-251: H3499X60 (CONC)

**SERVICE:** LGT SFL ints unctl may be turned off O/R. NSTD infra-red lgt co-lctd with Rwy 07, 25 and 250° edge lgt and one NSTD infra-red strobe lctd end of Rwy 07 and 250° ovrn. Infra-red strobe lctd end of Rwy 25 co—ctd with rwy end lgt. These lgt are vis only thru NVD. Rwy 07 NSTD ALSF-1 (missing last centerline barrette prior to thld). Rwy 25 ILS and PAPI GS not coincidental. **MILITARY—JASU** 5(A/M 32A-86) **FUEL** A-Min POL capability 2200-0600Z† Mon-Fri, exp 2-4 hr delay dur lcl flying. **FLUID** SP PRESAIR LHOX LOX OIL O-133-148-156 **TRAN ALERT** Svc avbl 1300-0100Z† Mon thru Fri, no weekend support. After hr support for Higher HQ msn only.

**NOISE:** Noise abatement: Departing heavy acft climb rwy heading to 1500' AGL prior to turning on course.

**MILITARY REMARKS:** Opr continuously. Arpt normally clsd fed hol from 0300Z† thru 1300Z† succeeding day. **RSTD** Degraded firefighting capability for B-2, C-5, VC-25, E-4, KC-10, MD-11, 747 and 777 acft—coordinate 48 hours prior to arrival for PPR and SVC. Confirm rescue and firefighting avbl prior ldg or tlf. PPR except AIREVAC and Armed Forces Courier. Official Business Only weekdays 1700-2100Z†, except AIREVAC and Armed Forces Courier obtain PPR 72 hrs prior to arrival, call DSN 731-6123, PPR is valid +/- 30 minutes of proposed ETA. No practice apch or landing during local flying. Dep acft remain at or blo 1400' until dep end of rwy. Fighter acft unable to ctc dep until airborne. B52 acft prohibited. Use of alert apron (x-mas tree) stub 1 rqr prior coordination with airfield management. NSTD rwy markings—assault strip marked (3500' X60') painted on Rwy 25. Rwy 25 centerline markings obscured by rubber deposits. **CAUTION** Extensive turbo prop training Mon-Fri 1300-0600Z†. Tran ramp marking may not be appropriate for large acft follow marshallers instructions. Significant increase in bird activity Apr-May, Sep-Nov. Deer hazard. Phase II in effect Apr-May and Sep-Nov. High potential for hydroplaning on Rwy 07-25 during periods of wet wx. Numerous unlighted obstructions located in primary surface. Aflid lgt intermittent between SS/SR due to local ngt vision training, non participating acft ctc twr prior to entering Class D airspace and to incr ints. **TFC PAT** TPA—Rectangular 1400 (1090), overhead 1900 (1590).

**MISC** AN/FMQ-19 automated obsn system in use, augmented by human obsn when necessary during aflid hrs. No COMSEC avbl for tran issue. No classified material stor at AM OPS, stor avbl at comd post. Backup wx obsn view ltd, rstd from 060°-280° by flightline facilities and trees. ATC Personnel in accordance with cooperative wx watch will alert wx personnel on any unreported wx condition that could affect flt safety. All tran acft ctc Comd Post 20 minutes prior to arrival. Ldt aircrew transportation on weekends. Aerodrome for NVG ops tran acft should receive briefing from 19 OSS Tactics at DNS 731-7013 or 19OSS.OSKTACTICS@US.AF.MIL. To ensure aircrew transportation avbl upon arrival, ctc aflid management at least 20 min prior to ldg. **NOTE:** See Special Notices—**CAUTION**—High density student flying. ARFF-CAT 3, with 14 performance, 4880-5000 gallon of capability, ctc AMOP 731-6123 for updated ARFF status.

**AIRPORT MANAGER:** 501-987-3103

**COMMUNICATIONS:** SFA (Tfc permitting.) ATIS 119.175 251.1 (Mon-Fri 1200-0500Z†, Sat-Sun 1500-2300Z† except holidays.) PTD 372.2

® **APP/DEP CON** 119.5 306.2

**TOWER** 120.6 269.075 Opr continuously. (Hol, arpt CLOSED from 0300Z† preceding day thru 1300Z† succeeding day. Holiday on Mon, CLOSED 0500Z† preceding Sat thru 1300Z† succeeding Tue. CLOSED Dec 24, 0300Z† thru Dec 26, 1300Z† and CLOSED Dec 31, 0300Z† thru Jan 2 1300Z†)

**GND CON** 132.8 275.8 **CLNC DEL** 253.5 (weekdays 1300-0500Z†, other times or VHF only acft ctc Gnd Con. Ctc Clnc Del for engine start and req prior to taxi.)

**COMD POST** (ROCK OPS) 349.4

**ANG COMD POST** 138.6 225.45 **PMSV METRO** 239.8 WX svc avbl 24 hr unless aerodrome CLOSED at DSN 731-6152/6444, C501-987-6152/6444. AN/FMQ automated sys in use, augmented by human observation when necessary. Vis of aflid rstd for base WX ops southeast-south during manual augmentation by WX forecaster. Contact 26 OPR WX squadron DSN 731-2651/2652, C318-529-2651/2652 dur wx flt closure or evac.

**CLEARANCE DELIVERY PHONE:** For CD when una via freq ctc Little Rock Afb 501-379-2908 or Little Rock ATCT 501-379-2911.

MEMPHIS

H-6I, L-18F

DIAP, AD

CONTINUED ON NEXT PAGE

SC, 23 FEB 2023 to 20 APR 2023