

**THOMASTON—UPSON CO** (OPN)(KOPN) 5 NE UTC-5(-4DT) N32°57.30' W84°15.85'

**ATLANTA**  
H-9A, 12F, L-18J  
IAF

798 B NOTAM FILE OPN

**RWY 12-30:** H6350X100 (ASPH) S-20, D-50 MIRL

**RWY 12:** PAPI(P2L)—GA 3.5° TCH 32'. Thld dspcd 648'. Road.

**RWY 30:** MALSR. PAPI(P2L)—GA 3.0° TCH 27'. Thld dspcd 699'. Railroad.

**RUNWAY DECLARED DISTANCE INFORMATION**

**RWY 12:** TORA-6350 TODA-6350 ASDA-6173 LDA-5525

**RWY 30:** TORA-6350 TODA-6350 ASDA-5662 LDA-4962

**SERVICE:** S4 FUEL 100LL, JET A+ LGT ACTIVATE MALSR Rwy 30 and PAPI Rwy 12 and Rwy 30—CTAF. MIRL Rwy 12-30 preset med ints dusk-0500Z‡ after 0500Z‡ ACTIVATE—CTAF.

**AIRPORT REMARKS:** Attended 1300-2300Z‡. For after hrs svc call 706-741-0562.

**AIRPORT MANAGER:** 706-647-4500

**WEATHER DATA SOURCES:** AWOS-3 133.975 (706) 646-4123.

**COMMUNICATIONS:** CTAF/UNICOM 122.8

Ⓡ ATLANTA APP/DEP CON 124.2 (1115-0400Z‡)

ATLANTA CENTER APP/DEP CON 134.5 (0400-1115Z‡)

**CLEARANCE DELIVERY PHONE:** For CD ctc Atlanta Apch at 678-364-6132.

When Apch clsd ctc Atlanta ARTCC at 770-210-7692.

**RADIO AIDS TO NAVIGATION:** NOTAM FILE MCN.

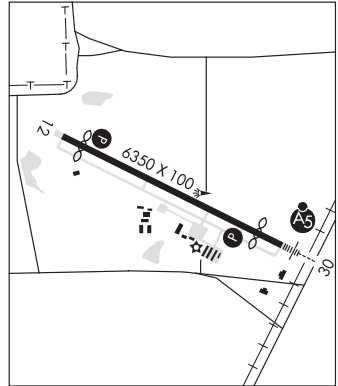
**MACON (H) DME 114.2** MCN Chan 89 N32°41.47' W83°38.83' 297° 35.0 NM to fld. 344.

DME unusable:

240°-280° blo 3,000'

**YATES NDB (MHW/LOM) 339** OP N32°55.16' W84°11.23' 302° 4.4 NM to fld. 692/3W.

**ILS/DME 109.75** I-OPN Chan 34(Y) Rwy 30. Class IB. LOM YATES NDB. LOC unusable byd 16° left and right of centerline.



**THOMASVILLE RGNL** (TVI)(KTVI) 6 NE UTC-5(-4DT) N30°54.09' W83°52.89'

**JACKSONVILLE**  
H-9B, 12F, L-21D, 22J  
IAF

264 B NOTAM FILE MCN

**RWY 04-22:** H6004X101 (ASPH) S-30 HIRL

**RWY 04:** PAPI(P2L)—GA 3.0° TCH 54'. Thld dspcd 506'. Trees.

**RWY 22:** MALSF. PAPI(P2L)—GA 3.0° TCH 61'. Trees.

**RWY 14-32:** H4999X100 (ASPH) S-20 LIRL 0.3% up NW

**RWY 14:** Trees.

**RUNWAY DECLARED DISTANCE INFORMATION**

**RWY 04:** TORA-6004 TODA-6004 ASDA-6004 LDA-5498

**RWY 22:** TORA-6004 TODA-6004 ASDA-5504 LDA-5504

**SERVICE:** S4 FUEL 100LL, JET A, A+ LGT HIRL Rwy 04-22 preset low ints, to incr ints and ACTIVATE MALSF—CTAF. ACTIVATE PAPI Rwy 04 and Rwy 22 dur dalgt hrs—CTAF. After dusk PAPI Rwy 04 and Rwy 22 opr continuously. Twys on apron side of rwys lgtd.

**AIRPORT REMARKS:** Attended Mon-Fri 1100-0100Z‡, Sat-Sun 1200-0000Z‡.

**AIRPORT MANAGER:** 229-225-4313

**WEATHER DATA SOURCES:** AWOS-3PT 119.175 (229) 225-4336.

**COMMUNICATIONS:** CTAF/UNICOM 123.075

RCO 122.55 (MACON RADIO)

Ⓡ VALDOSTA APP/DEP CON 126.6 (east of VAD R-360 — R-180 radials)

132.375 (west of VAD R-360 radial) (Opr 1300-0600Z‡ Mon-Thu,

1300-0300Z‡ Fri, 1400-2200Z‡ Sat, Sun and

hol) other times ctc

Ⓡ JAX CENTER APP/DEP CON 125.75

**RADIO AIDS TO NAVIGATION:** NOTAM FILE GNV.

**GREENVILLE (L) (L) VORTAC 109.0** GEF Chan 27 N30°33.08' W83°46.99' 345° 21.6 NM to fld. 220/1E.

VOR unusable:

360°-013° blo 5,000'

181°-359°

**PATON NDB (MHW) 245** GTP N30°57.45' W83°49.60' 225° 4.4 NM to fld. 243/5W. NOTAM FILE MCN.

**ILS/DME 110.1** I-TVI Chan 38 Rwy 22. Class IB. Glideslope unusable blo 600'. LOC unusable wi 1.3 NM abv 1,254'.

