

SPRINGVILLE MUNI (JTC)(KJTC) 1 WSW UTC-7 N34°07.77' W109°18.65'

PHOENIX
H-4K, L-5D
IAP

7055 B NOTAM FILE PRC

RWY 03-21: H8422X75 (ASPH) S-30 MIRL

RWY 03: PAPI(P2L)—GA 4.0° TCH 46'. 0.4% down.

RWY 21: PAPI(P2L)—GA 3.0° TCH 35'. Rgt tfc. 0.6% up.

RWY 11-29: H4603X60 (ASPH) S-19 MIRL

RWY 11: PAPI(P2L)—GA 3.0° TCH 35'.

SERVICE: FUEL 100LL, JET A+ LGT Rwy 03 PAPI does not provide obstacle clearance 2 NM byd thld. ACTVT PAPI Rwy 03 and Rwy 21; MIRL Rwy 03-21; PAPI Rwy 11; MIRL Rwy 11-29—CTAF. (NSTD-5 clicks on; 7 clicks off.

AIRPORT REMARKS: Attended 1500-2300Z. For fuel after hrs call 928-245-0151. Mil tfc near arpt. Wildlife on and invof arpt. Density indicators located at fuel pumps.

AIRPORT MANAGER: 928-333-5746

WEATHER DATA SOURCES: AWOS-3PT 119.65 (928) 333-5716.

COMMUNICATIONS: CTAF/UNICOM 122.8

Ⓡ ALBUQUERQUE CENTER APP/DEP CON 132.9

CLEARANCE DELIVERY PHONE: For CD etc Albuquerque ARTCC at 505-856-4861.

RADIO AIDS TO NAVIGATION: NOTAM FILE SJN.

ST JOHNS (VH) (H) VORTAC 112.3 SJN Chan 70 N34°25.44'

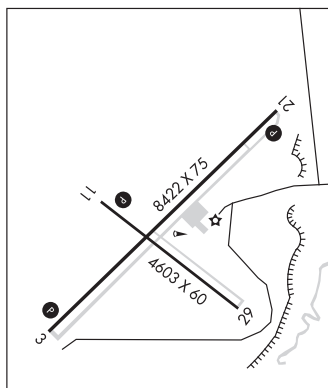
W109°08.61' 193° 19.5 NM to fld. 6840/12E.

VOR unusable:

097°-108° byd 40 NM

109°-119° byd 40 NM blo 18,000'

120°-222° byd 40 NM



STANFIELD N32°53.15' W111°54.52' NOTAM FILE PRC.

PHOENIX
H-4J, L-5B, A

(H) (H) VORTAC 114.8 TFD Chan 95 048° 8.3 NM to Casa Grande Muni. 1316/12E.

RCO 122.1R 114.8T (PRESCOTT RADIO)

STELLAR AIRPARK (See CHANDLER on page 38)

SUN VALLEY (See BULLHEAD CITY on page 36)

SUPERIOR MUNI (E81) 2 SW UTC-7 N33°16.67' W111°07.62'

PHOENIX

2646 NOTAM FILE PRC Not insp.

RWY 04-22: 3250X75 (GRVL)

RWY 22: Tree.

AIRPORT REMARKS: Unattended. Emerg phone 520-689-5254 (police). Gate code 2646. Arpt manager recommends Idg uphill to the northeast. Rwy 04-22 east 2000 ft of rwy, excellent cond, west 1000 ft, good to fair. Rwy 04-22 brush and trees to a height of 12 ft, 75 ft from centerline on both sides. Mountain 4375' MSL located 9000' west of Rwy 04. Livestock on arpt. Rwy 04 thld marked by painted rubber tires, Rwy 22 thld unmarked. Obstructions brush NE rwy; terrain NE; hills and mtn SSW thru SW of arpt.

AIRPORT MANAGER: 520-689-5752

COMMUNICATIONS: CTAF/UNICOM 122.95

CLEARANCE DELIVERY PHONE: For CD etc Albuquerque ARTCC at 505-856-4861.