

WAAS CH 86218 W05A	APP CRS 047°	Rwy Idg TDZE Apt Elev	8700 53 54
--	------------------------	-----------------------------	---------------------------------------

RNAV (GPS) RWY 5

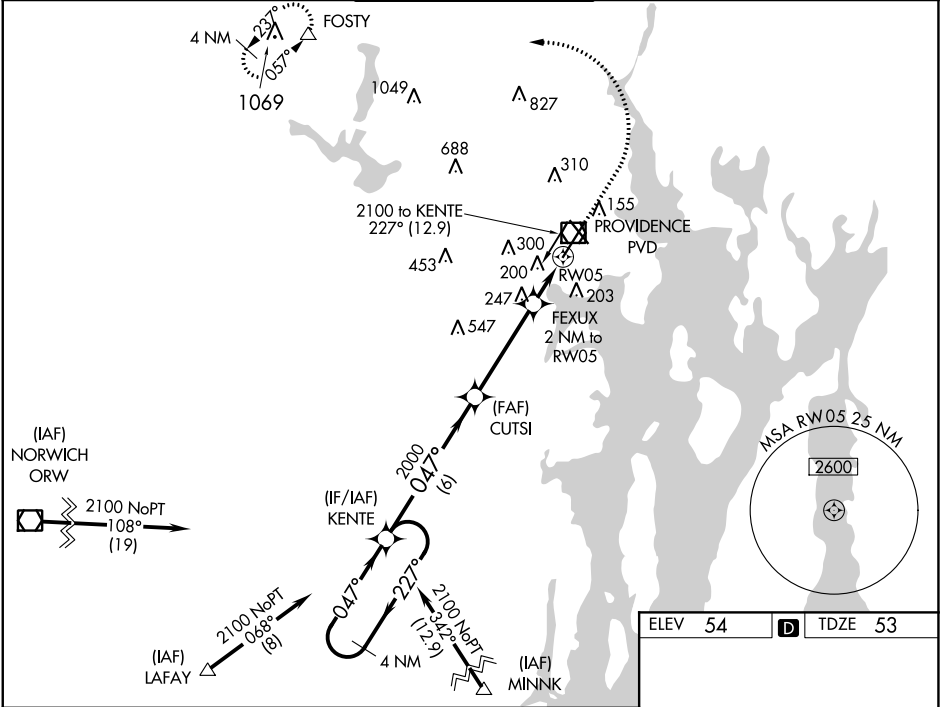
RHODE ISLAND TF GREEN INTL (PVD)

▼ For uncompensated Baro-VNAV systems, LNAV/VNAV NA below -16°C (3°F) or above 54°C (130°F). DME/DME RNP-0.3 NA. When tower closed: increase LPV, LNAV/VNAV all Cats and LNAV Cats A and B visibilities to ¾ SM, and LNAV Cats C and D visibility to 1 SM. When control tower closed: For inop ALS, increase LNAV Cats C and D visibility to 1¾ SM.

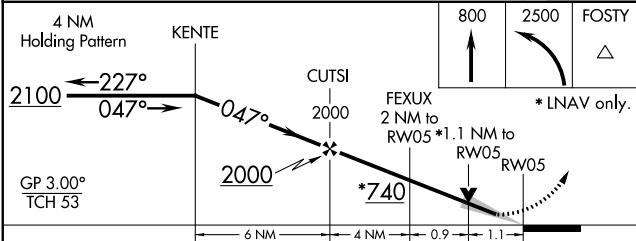
ALSF-2

MISSED APPROACH: Climb to 800 then climbing left turn to 2500 direct FOSTY and hold.

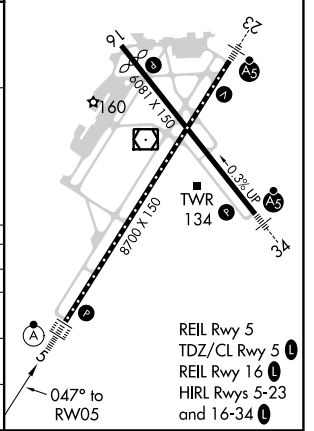
D-ATIS 124.2	PROVIDENCE APP CON * 123.675 244.875	PROVIDENCE TOWER * 120.7 (CTAF) 257.8	GND CON 121.9 348.6	CLNC DEL 126.65 348.6
------------------------	--	---	-------------------------------	---------------------------------



ELEV 54	TDZE 53
---------	---------



CATEGORY	A	B	C	D
LPV DA		253/18	200 (200-½)	
LNAV/VNAV DA		361/24	308 (400-½)	
LNAV MDA	460/24	407 (500-½)	460/40	407 (500-¾)
CIRCLING	560-1 506 (600-1)	640-1 586 (600-1)	640-1½ 586 (600-1½)	860-2½ 806 (900-2½)



NE-1, 23 FEB 2023 to 23 MAR 2023

NE-1, 23 FEB 2023 to 23 MAR 2023