


APP CRS	Rwy Idg	8700
227°	TDZE	50
	Apt Elev	55

RNAV (RNP) Z RWY 23

RHODE ISLAND TF GREEN INTL (PVD)

▼ For uncompensated Baro-VNAV systems, procedure NA below -15°C (5°F) or above 48°C (118°F). RF required. For inop MALSR, increase RNP 0.30 all Cats visibility to 1¼. GPS Required.

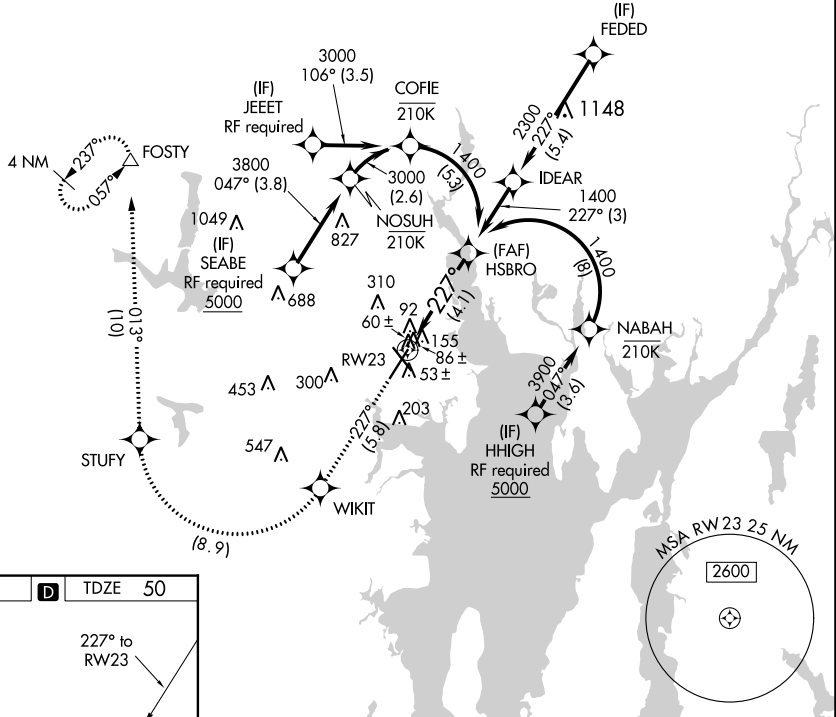
MALSR



Climb to 2500 on track 227° to WIKIT and right turn to STUFY and on track 013° to FOSTY and hold.

D-ATIS 124.2	PROVIDENCE APP CON * 123.675 244.875	PROVIDENCE TOWER * 120.7 (CTAF) 257.8	GND CON 121.9 348.6	CLNC DEL 126.65 348.6
------------------------	--	---	-------------------------------	---------------------------------

RADAR REQUIRED



NE-1, 23 FEB 2023 to 23 MAR 2023

NE-1, 23 FEB 2023 to 23 MAR 2023

ELEV 55	D	TDZE 50
---------	----------	---------

REIL Rwy 5
TDZ/CL Rwy 5
REIL Rwy 16
HIRL Rwys 5-23 and 16-34

2500 tr 227°	WIKIT	STUFY	tr 013°	FOSTY	HSBRO
					1400

RW23 → 227° → 1400

See planview for multiple IF locations.

GP 3.00°
TCH 5T

4.1 NM

CATEGORY	A	B	C	D
RNP 0.30 DA	434/40 384 (400-¾)			

AUTHORIZATION REQUIRED