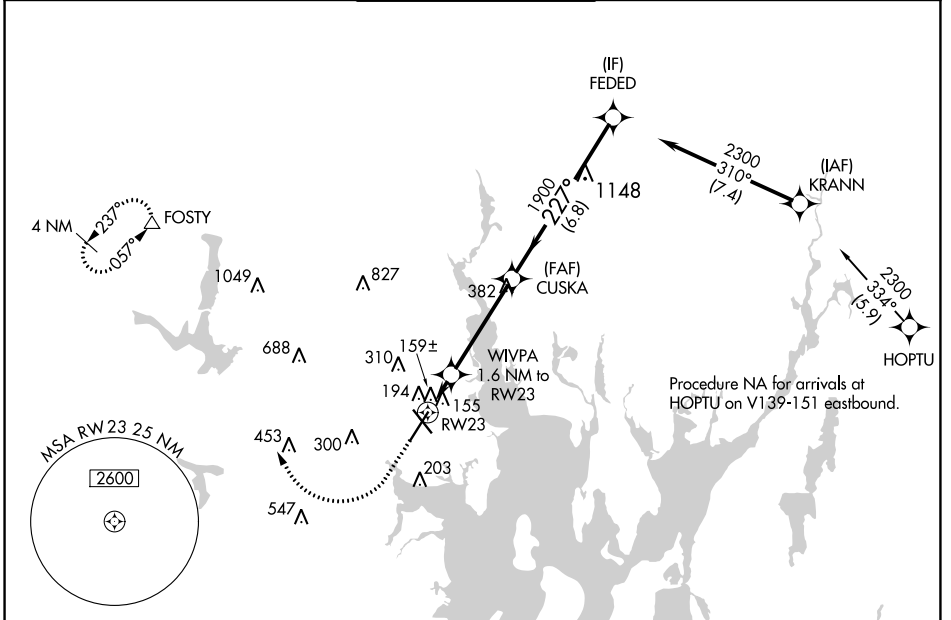


WAAS CH 93823 W23A	APP CRS 227°	Rwy Idg TDZE Apt Elev	8700 50 54
--	------------------------	-----------------------------	---------------------------------------

RNAV (GPS) Y RWY 23

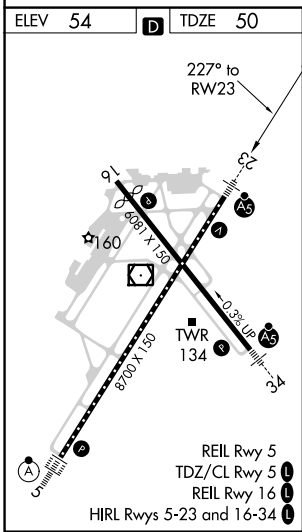
RHODE ISLAND TF GREEN INTL (PVD)

RNP APCH. ▼ For uncompensated Baro-VNAV systems, procedure NA below -17°C or above 54°C. For inop ALS, increase LNAV Cats C/D visibility to RVR 6000. ** RVR 1800 authorized with use of FD or AP or HUD to DA.		MALSR AS	MISSED APPROACH: Climb to 1700 then climbing right turn to 2500 direct FOSTY and hold.	
D-ATIS 124.2	PROVIDENCE APP CON * 123.675 244.875	PROVIDENCE TOWER * 120.7 (CTAF) 0 257.8	GND CON 121.9 348.6	CLNC DEL 126.65 348.6



NE-1, 23 FEB 2023 to 23 MAR 2023

NE-1, 23 FEB 2023 to 23 MAR 2023



ELEV 54	D	TDZE 50	1700 2500 FOSTY ↑ ↷ △ VGSi and RNAV glidepath not coincident (VGSi Angle 3.00/TCH 41).			
*LNAV only			WIVPA 1.6 NM to RW23		FEDED 2300	
RW23			*1 NM to RW23	CUSKA 1900	GP 3.00° TCH 51	
-1 NM			0.6 NM	4.1 NM	6.8 NM	
CATEGORY	A	B	C	D		
LPV DA **	250/24		200 (200-½)			
LNAV/VNAV DA	346/24		296 (300-½)			
LNAV MDA	460/24	410 (500-½)		460/40	410 (500-¾)	
C CIRCLING	560-1 506 (600-1)	640-1 586 (600-1)	640-1½ 586 (600-1½)	860-2½ 806 (900-2½)		