

LOC/DME I-PAJ 109.1 Chan 28	APP CRS 191°	Rwy Idg 10801 TDZE 991 Apt Elev 1027
--	------------------------	---

ILS RWY 19R (SA CAT I)

KANSAS CITY INTL (MCI)

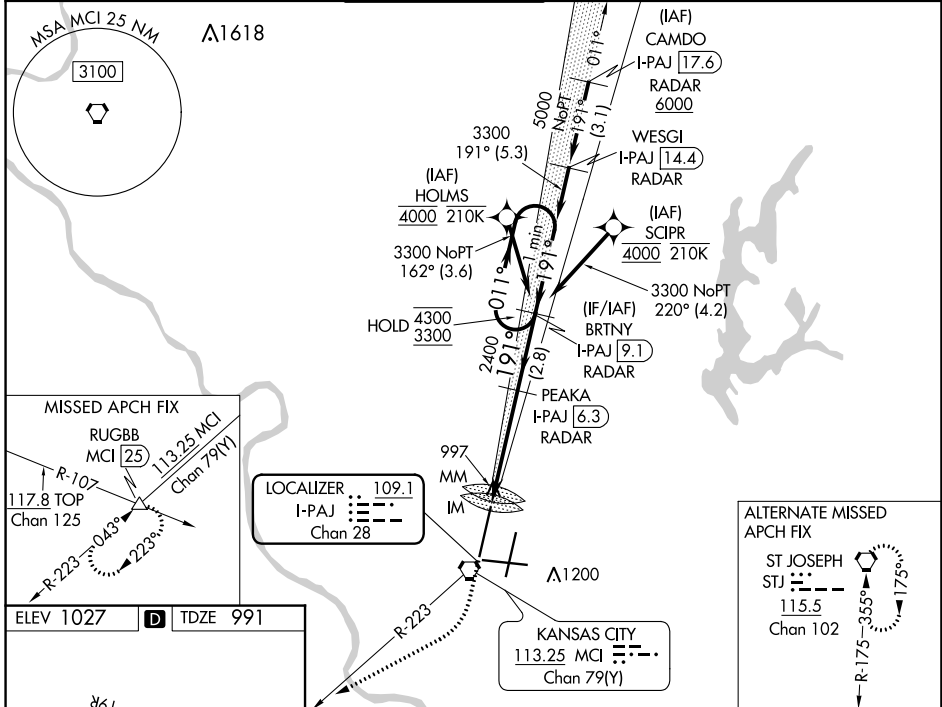
RADAR required for procedure entry. DME or RADAR required.
RNP APCH - GPS. From SCIPR or HOLMS.

ALSF-2

MISSED APPROACH: Climb to 2000 then climbing right turn to 4000 on heading 240° and on MCI VORTAC R-223 to RUGBB INT/ MCI 25 DME and hold.

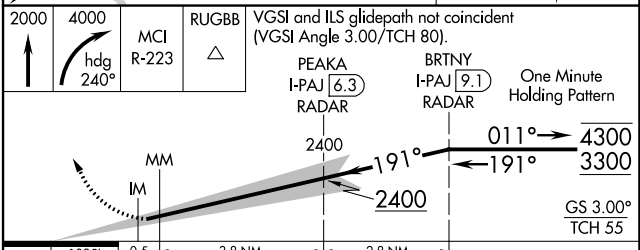
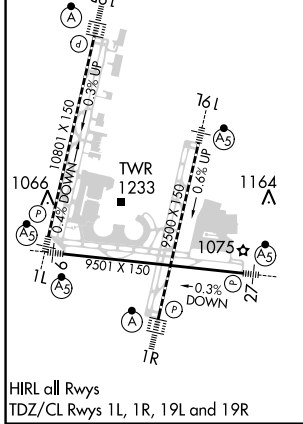
Requires specific OPSPEC, MSPEC, or LOA approval. Simultaneous approach authorized except from SCIPR and HOLMS.

D-ATIS 128.375	KANSAS CITY APP CON 120.95 318.1	INTERNATIONAL TOWER 128.2 254.25	GND CON 121.8	CLNC DEL 135.7	CPDLC
--------------------------	--	--	-------------------------	--------------------------	-------



NC-3, 23 FEB 2023 to 23 MAR 2023

NC-3, 23 FEB 2023 to 23 MAR 2023



CATEGORY	A	B	C	D
S-ILS 19R	RA 135/14 150 DA 1141			

SA CATEGORY I ILS - SPECIAL AIRCREW & AIRCRAFT CERTIFICATION REQUIRED