

LOC/DME I-PVL 110.75 Chan 44 (Y)	APP CRS 011°	Rwy Idg TDZE 1017 Apt Elev 1027
---	------------------------	---

ILS RWY 1R (CAT II & III)

KANSAS CITY INTL (MCI)

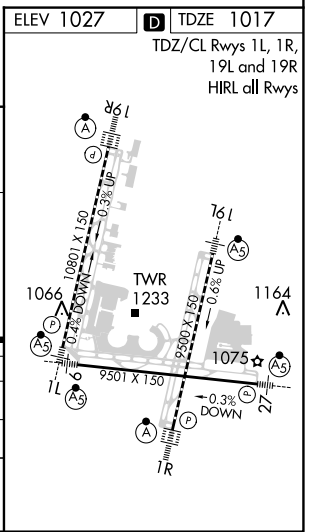
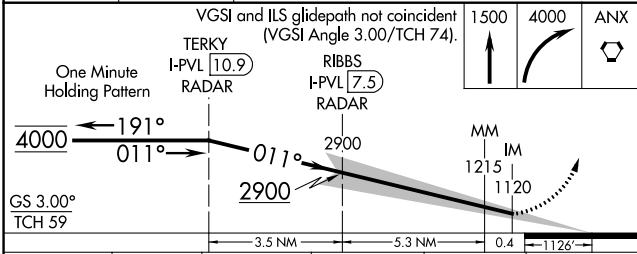
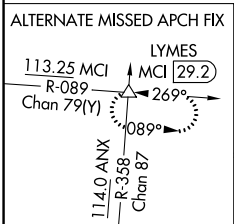
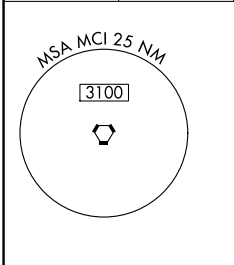
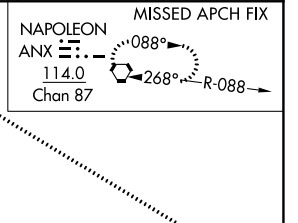
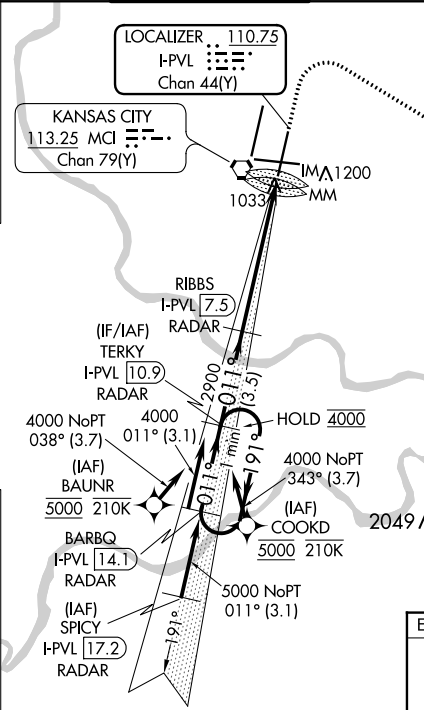
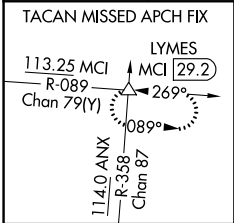
RADAR required for procedure entry. DME or RADAR required.
RNP APCH-GPS. From BAUNR or COOKD.

Simultaneous approach authorized except from BAUNR and COOKD. RVR 1000 authorized with specific OSPEC, MSPEC, or LOA approval and use of autoland or HUD to touchdown.

ALSIF-2

MISSED APPROACH: Climb to 1500 then climbing right turn to 4000 direct ANX VORTAC and hold. (TACAN aircraft) Climb to 1500 then climbing right turn to 4000 on heading 130° and MCI VORTAC R-089 to LYMES INT/MCI 29.2 DME and hold.

D-ATIS 128.375	KANSAS CITY APP CON 120.95 318.1	INTERNATIONAL TOWER 128.2 254.25	GND CON 121.8	CLNC DEL 135.7	CPDLC
--------------------------	--	--	-------------------------	--------------------------	-------



CATEGORY	A	B	C	D	E
S-ILS 1R		CAT II RA 111/12 100 DA 1117			
S-ILS 1R		CAT III RVR 06			

CATEGORY II & III ILS - SPECIAL AIRCREW & AIRCRAFT CERTIFICATION REQUIRED

NC-3, 23 FEB 2023 to 23 MAR 2023

NC-3, 23 FEB 2023 to 23 MAR 2023