

LOC/DME I-PVL 110.75 Chan 44 (Y)	APP CRS 011°	Rwy Idg TDZE 1017 Apt Elev 1027
---	------------------------	---

ILS or LOC RWY 1R

KANSAS CITY INTL (MCI)

RADAR required for procedure entry. DME or RADAR required.
RNP APCH-GPS. From BAUNR or COOKD.

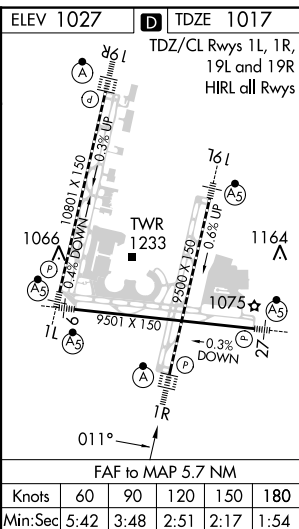
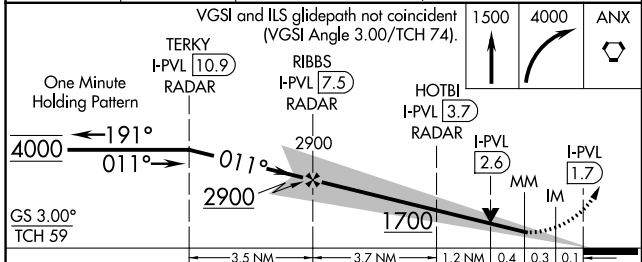
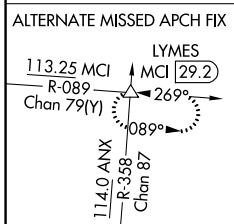
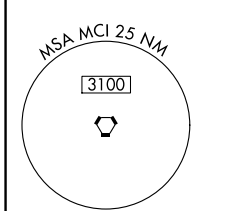
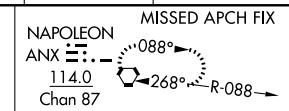
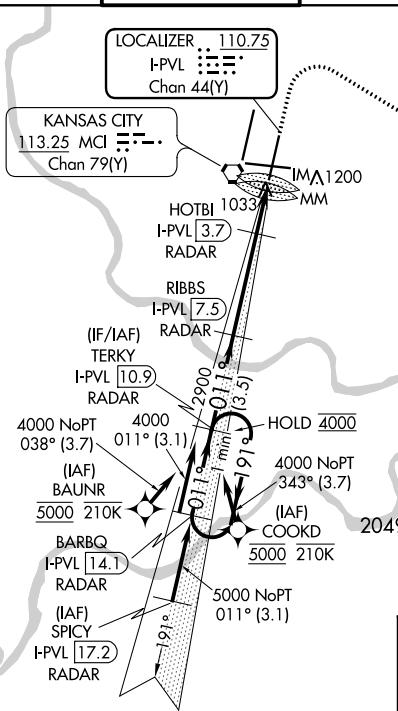
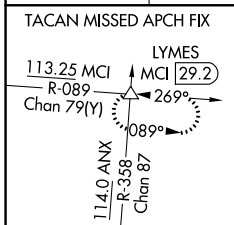
ALSF-2



MISSED APPROACH: Climb to 1500 then climbing right turn to 4000 direct ANX VORTAC and hold.
(TACAN AIRCRAFT) Climb to 1500 then climbing right turn to 4000 on heading 130° and MCI VORTAC R-089 to LYMES INT/MCI 29.2 DME and hold.

For inop ALS, increase S-ILS 1R Cat E to RVR 4000 and S-LOC 1R Cat C/D/E visibility to RVR 5500. Simultaneous approach authorized except from BAUNR and COOKD

D-ATIS 128.375	KANSAS CITY APP CON 120.95 318.1	INTERNATIONAL TOWER 128.2 254.25	GND CON 121.8	CLNC DEL 135.7	CPDLC
--------------------------	--	--	-------------------------	--------------------------	-------



CATEGORY	A	B	C	D	E
S-ILS 1R	1217/18 200 (200-½)				
S-LOC 1R	1360/24	343 (400-½)	1360/30 343 (400-¾)		
CIRCLING	1540-1 513 (600-1)	1540-1½ 513 (600-1½)		1580-2 553 (600-2)	

NC-3, 23 FEB 2023 to 23 MAR 2023

NC-3, 23 FEB 2023 to 23 MAR 2023