

LOC/DME I-UGY 109.7 Chan 34	APP CRS 274°	Rwy Idg TDZE 1027 Apt Elev 1027	9501
---	------------------------	---	-------------

ILS or LOC RWY 27

KANSAS CITY INTL (MCI)

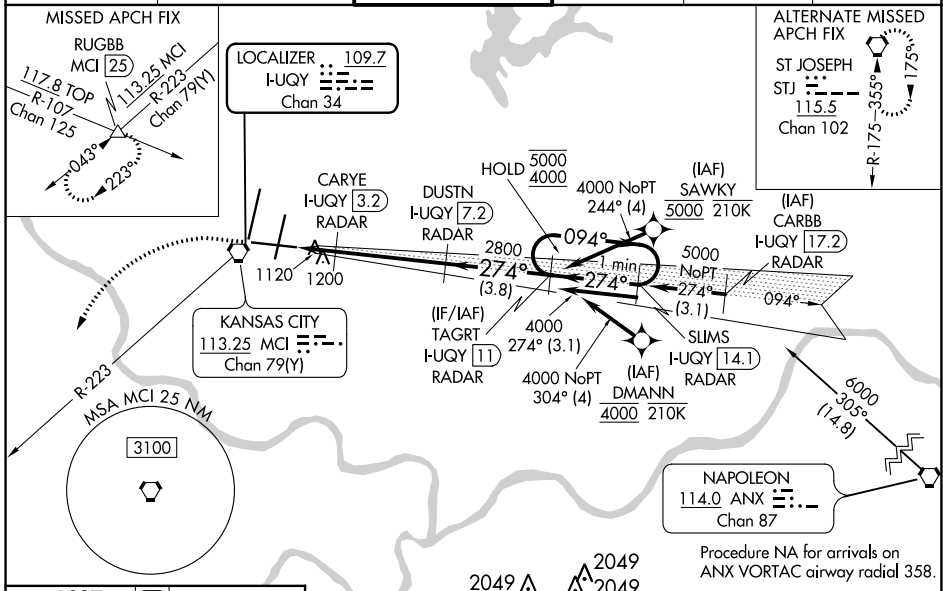
RNP APCH - GPS. From DMANN or SAWKY. DME or RADAR required.

For inop ALS, increase S-ILS 27 Cat E visibility to RVR 4000, S-LOC 27 Cat C/D/E visibility to 1 3/8 SM and CARYE fix minimums S-LOC 27 Cat C/D/E visibility to RVR 5500.
*RVR 1800 authorized with use of FD or AP or HUD to DA.



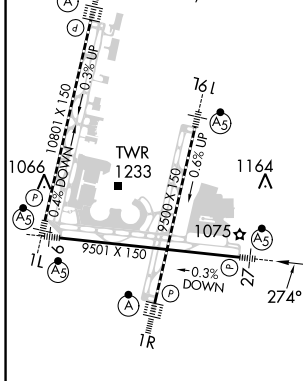
MISSED APPROACH: Climb to 1600 then climbing left turn to 4000 on heading 230° and MCI VORTAC R-223 to RUGBB INT/ MCI 25 DME and hold.

D-ATIS 128.375	KANSAS CITY APP CON 120.95 318.1	INTERNATIONAL TOWER 128.2 254.25	GND CON 121.8	CLNC DEL 135.7	CPDLC
--------------------------	--	--	-------------------------	--------------------------	-------



ELEV 1027	D TDZE 1027
-----------	--------------------

HIRL all Rwys
TDZ/CL Rwys 1L, 1R, 19R and 19L



FAF to MAP 5.4 NM					
Knots	60	90	120	150	180
Min:Sec	5:24	3:36	2:42	2:10	1:48

CATEGORY	A	B	C	D	E
S-ILS 27*	1227/24 200 (200-1/2)				
S-LOC 27	1540/24	513 (600-1/2)	1540/55 513 (600-1)		
C CIRCLING	1540-1	513 (600-1)	1540-1 1/2 513 (600-1 1/2)	1580-2 553 (600-2)	
CARYE FIX MINIMUMS					
S-LOC 27	1380/24	353 (400-1/2)	1380/30 353 (400-3/4)		
C CIRCLING	1540-1	513 (600-1)	1540-1 1/2 513 (600-1 1/2)	1580-2 553 (600-2)	

NC-3, 23 FEB 2023 to 23 MAR 2023

NC-3, 23 FEB 2023 to 23 MAR 2023