

LOC/DME I-RNI 109.7 Chan 34	APP CRS 094°	Rwy Idg TDZE Apt Elev 9501 1016 1027
---	------------------------	--

ILS or LOC RWY 9

KANSAS CITY INTL (MCI)

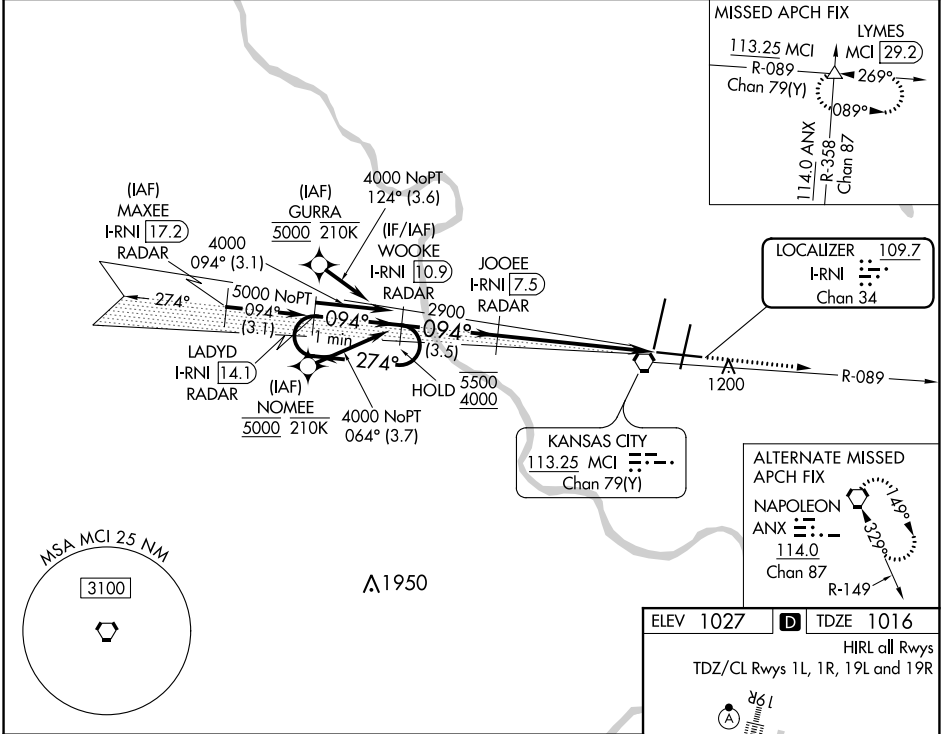
RADAR required for procedure entry. DME or RADAR required.
RNP APCH - GPS. From GURRA or NOME. E.

▼ Inop table does not apply to S-ILS 9. For inop ALS, increase S-LOC 9 Cat E visibility to 1 3/8 SM.

MALS/R

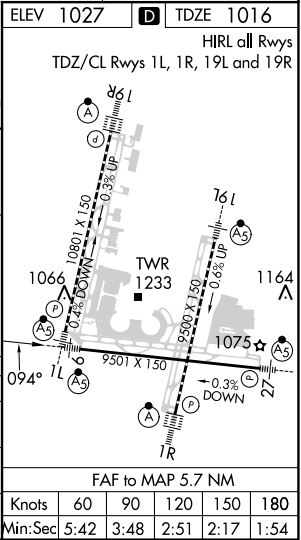
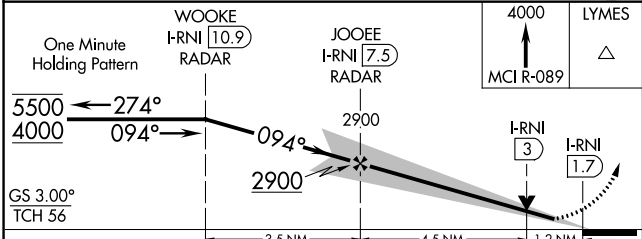
MISSED APPROACH: Climb to 4000 on MCI R-089 to LYMES/MCI 29.2 DME/RADAR and hold.

D-ATIS 128.375	KANSAS CITY APP CON 120.95 318.1	INTERNATIONAL TOWER 128.2 254.25	GND CON 121.8	CLNC DEL 135.7	CPDLC
--------------------------	--	--	-------------------------	--------------------------	-------



NC-3, 23 FEB 2023 to 23 MAR 2023

NC-3, 23 FEB 2023 to 23 MAR 2023



One Minute Holding Pattern	WOOKE I-RNI [10.9] RADAR	JOOEE I-RNI [7.5] RADAR	4000 MCI R-089	LYMES	
GS 3.00° TCH 56	5500 ← 274°	4000 → 094°	2900	I-RNI [3] I-RNI [1.7]	
CATEGORY	A	B	C	D	E
S-ILS 9	1266/40		250 (300-3/4)		
S-LOC 9	1460/24	444 (500-1/2)	1460/45	444 (500-7/8)	
CIRCLING	1540-1	513 (600-1)	1540-1 1/2	513 (600-1 1/2)	
			1580-2	553 (600-2)	

FAF to MAP 5.7 NM					
Knots	60	90	120	150	180
Min:Sec	5:42	3:48	2:51	2:17	1:54