

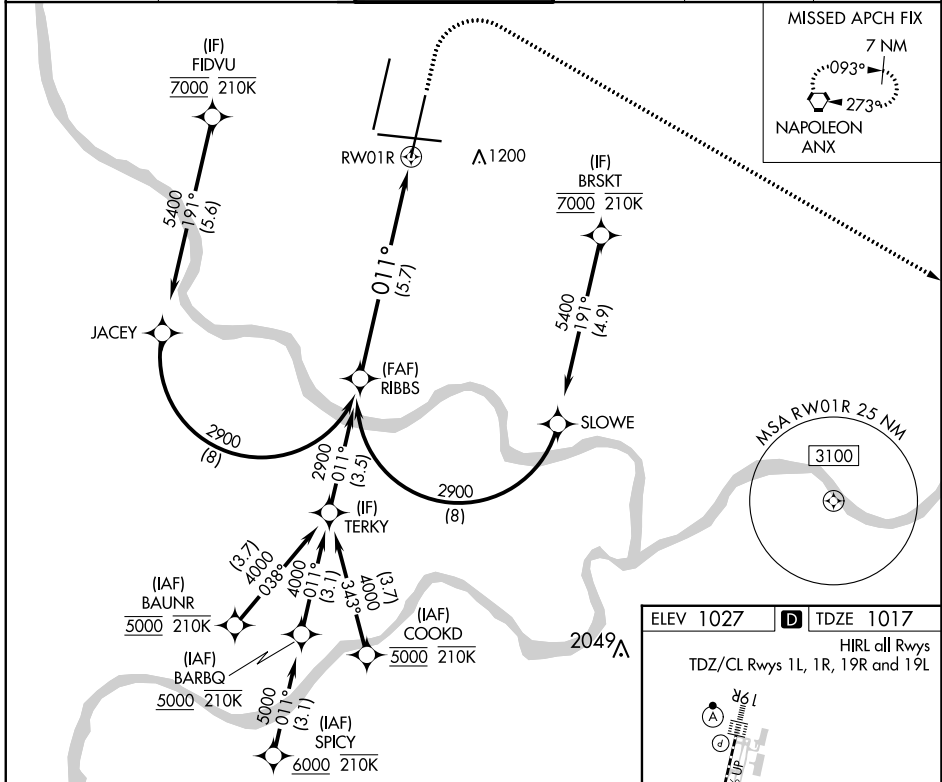
APP CRS	Rwy Idg	9500
011°	TDZE	1017
	Apt Elev	1027

RNAV (RNP) Z RWY 1R

KANSAS CITY INTL (MCI)

RNP AR APCH - GPS.		ALSF-2 	MISSED APPROACH: Climb to 1500 then climbing right turn to 4000 direct ANX VORTAC and hold.
<p>▼ Use of FD or AP required during simultaneous operations. For uncompensated Baro-VNAV systems, procedure NA below -19°C or above 54°C. Simultaneous approach authorized, except for arrivals at FIDVU, BRSKT, BAUNR and COOKD. For inop ALS, increase RNP 0.30 all Cats visibility to RVR 4500.</p>			

D-ATIS 128.375	KANSAS CITY APP CON 120.95 318.1	INTERNATIONAL TOWER 128.2 254.25	GND CON 121.8	CLNC DEL 135.7	CPDLC
--------------------------	--------------------------------------------	--------------------------------------------	-------------------------	--------------------------	-------



NC-3, 23 FEB 2023 to 23 MAR 2023

NC-3, 23 FEB 2023 to 23 MAR 2023

RIBBS VGS1 and RNAV glidepath not coincident (VGS1 Angle 3.00/TCH 74).		1500	4000	ANX
GP 3.00° TCH 59		See planview for multiple IF locations.		
CATEGORY	A	B	C	D
RNP 0.30 DA	1 280/24		2 63 (300-1/2)	
AUTHORIZATION REQUIRED				

