


WAAS CH 42808 W01B	APP CRS 011°	Rwy ldg 10801 TDZE 1014 Apt Elev 1027
--	------------------------	--

RNAV (GPS) Y RWY 1L

KANSAS CITY INTL (MCI)

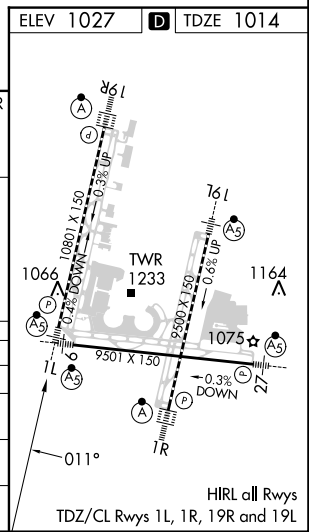
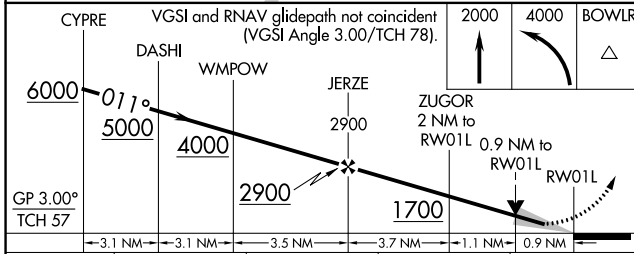
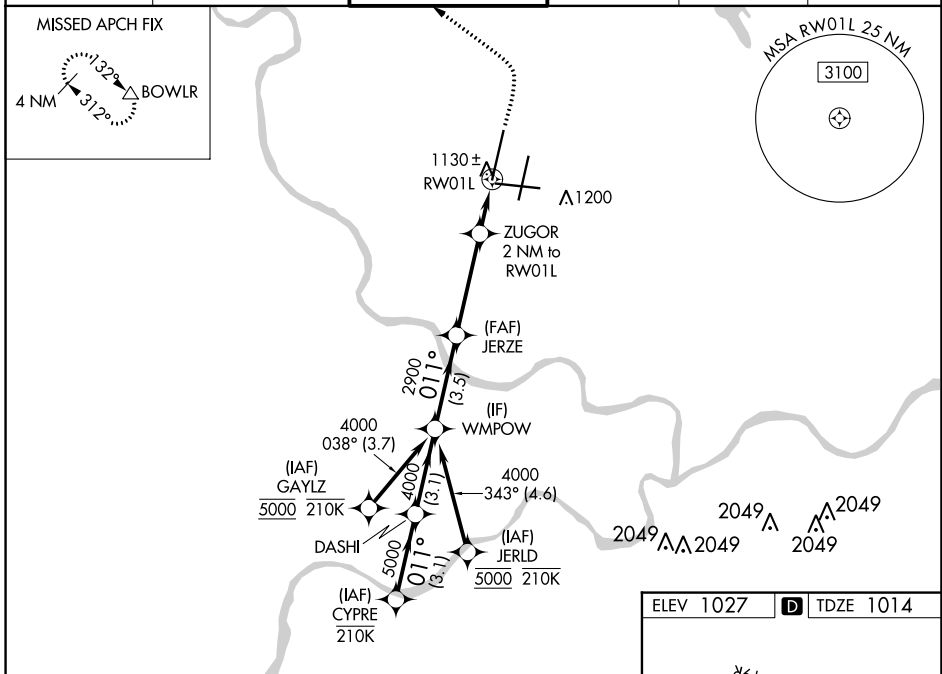
RNP APCH - GPS.

▼ Use of FD or AP required during simultaneous operations. LNAV procedure NA during simultaneous operations. For uncompensated Baro-VNAV systems, LNAV/VNAV NA below -19°C or above 54°C. For inop ALS, increase LNAV/VNAV all Cats visibility to RVR 4500 and LNAV Cats C/D visibility to RVR 5500. Simultaneous approach authorized except from GAYLZ and JERLD.

MALSR 

MISSED APPROACH: Climb to 2000 then climbing left turn to 4000 direct BOWLR and hold.

D-ATIS 128.375	KANSAS CITY APP CON 120.95 318.1	INTERNATIONAL TOWER 128.2 254.25	GND CON 121.8	CLNC DEL 135.7	CPDLC
--------------------------	--	--	-------------------------	--------------------------	-------



CATEGORY	A	B	C	D
LPV DA		1214/18	200 (200-½)	
LNAV/VNAV DA		1328/24	314 (400-½)	
LNAV MDA	1380/24	366 (400-½)	1380/35	366 (400-¾)
CIRCLING	1540-1	513 (600-1)	1540-1½	1580-2
			513 (600-½)	553 (600-2)

NC-3, 23 FEB 2023 to 23 MAR 2023

NC-3, 23 FEB 2023 to 23 MAR 2023