

(TIFTO7.MCI) 23054

# TIFTO SEVEN DEPARTURE

AL-780 (FAA)

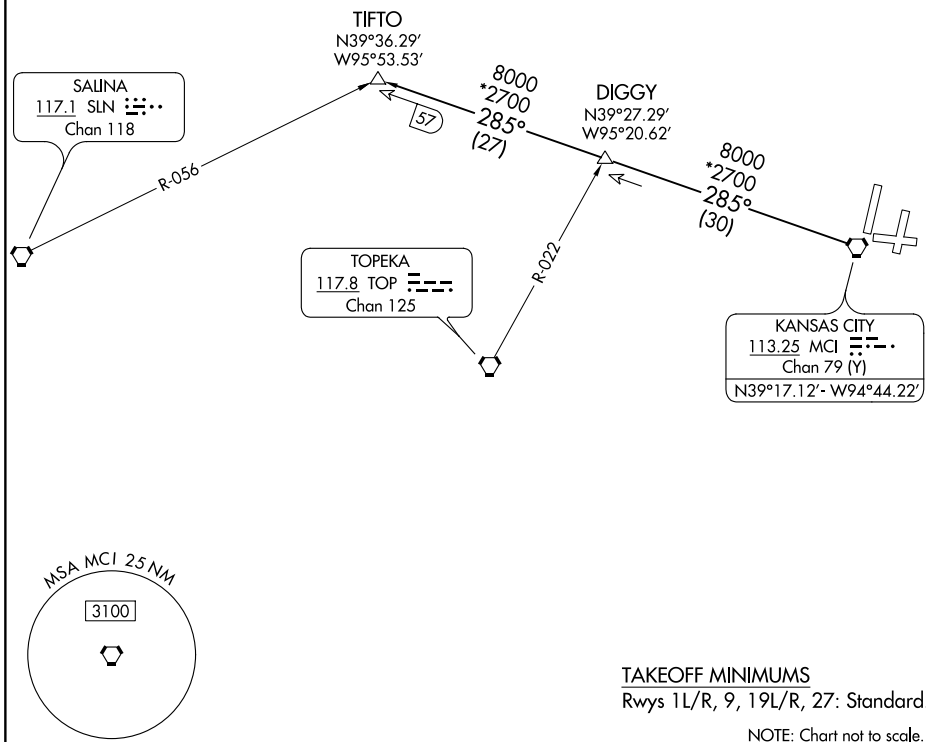
KANSAS CITY INTL (MCI)  
KANSAS CITY, MISSOURI

**TOP ALTITUDE:  
10000**

RADAR required.

D-ATIS  
128.375  
CLNC DEL  
135.7

KANSAS CITY DEP CON  
124.7 284.7



NC-3, 23 FEB 2023 to 23 MAR 2023

NC-3, 23 FEB 2023 to 23 MAR 2023



## DEPARTURE ROUTE DESCRIPTION

TAKEOFF ALL RUNWAYS: Climb on assigned heading for RADAR vectors to appropriate route. Maintain 10000 or as assigned by ATC, expect filed altitude 10 minutes after departure.

TIFTO TRANSITION (TIFTO7.TIFTO): From over MCI VORTAC on MCI R-285 to TIFTO.

**TIFTO SEVEN DEPARTURE**  
(TIFTO7.MCI) 23FEB23

KANSAS CITY, MISSOURI  
KANSAS CITY INTL (MCI)