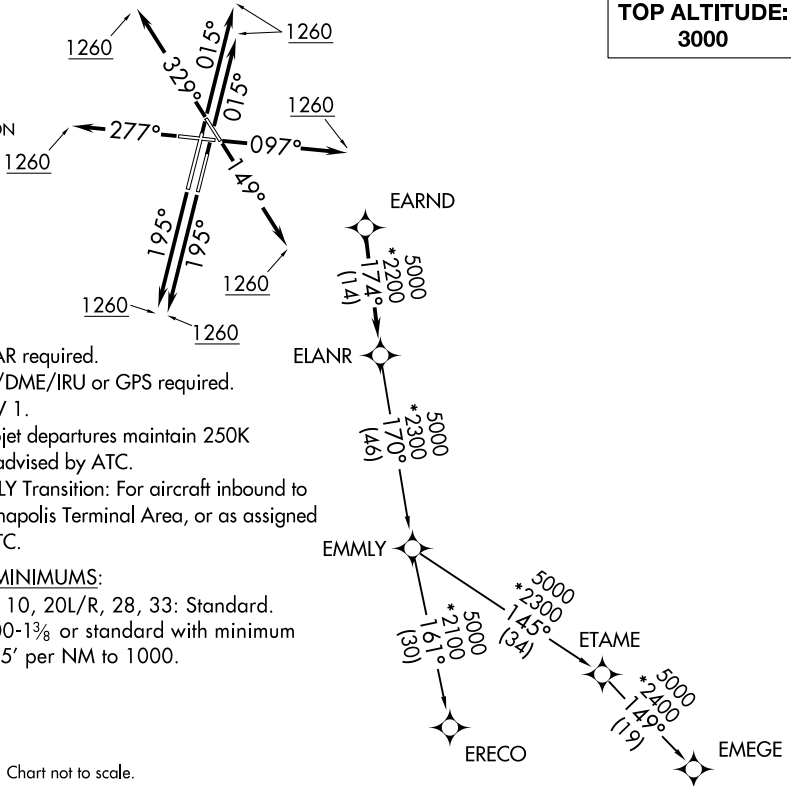


ELANR SIX DEPARTURE (RNAV)

CHICAGO/WEST CHICAGO, ILLINOIS

ATIS	
132.075	
GND CON	
121.8	
DUPAGE TOWER	
120.9 257.8	
CHICAGO DEP CON	
133.5 349.0	1

TOP ALTITUDE:
3000



NOTE: RADAR required. _____ ELA

NOTE: DME/DME/IRU or GPS required.

NOTE: RNAV 1.

NOTE: Turbojet departures maintain 250K
until advised by ATC.

NOTE: EMMLY Transition: For aircraft inbound to
Indianapolis Terminal Area, or as assigned
by ATC.

TAKEOFF MINIMUMS:

Rwys 2L/R, 10, 20L/R, 28, 33: Standard.
Rwy 15: 300-13/8 or standard with minimum
climb of 205' per NM to 1000.

NOTE: Chart not to scale.

DEPARTURE ROUTE DESCRIPTION

TAKEOFF RUNWAY 2L/R: Climb heading 015° to 1260,
then as assigned by ATC, for vectors to EARND. Thence. . .
TAKEOFF RUNWAY 10: Climb heading 097° to 1260,
then as assigned by ATC, for vectors to EARND. Thence. . .
TAKEOFF RUNWAY 15: Climb heading 149° to 1260,
then as assigned by ATC, for vectors to EARND. Thence. . .
TAKEOFF RUNWAY 20L/R: Climb heading 195° to 1260,
then as assigned by ATC, for vectors to EARND. Thence. . .
TAKEOFF RUNWAY 28: Climb heading 277° to 1260,
then as assigned by ATC, for vectors to EARND. Thence. . .
TAKEOFF RUNWAY 33: Climb heading 329° to 1260,
then as assigned by ATC, for vectors to EARND. Thence. . .

...on track 174° to ELANR, then on (transition). Maintain 3000. Expect filed altitude 10 minutes after departure.

EMERGE TRANSITION (ELANR6.EMERGE):

EMMLY TRANSITION (ELANR6.EMMLY):

ERECO TRANSITION (ELANR6.ERECO):

ELANR SIX DEPARTURE (RNAV)

(ELANR6.ELANR) 10OCT19

CHICAGO/WEST CHICAGO, ILLINOIS
DUPAGE (DPA)